

Conservation the Idaho Way

ISSUE SEVENTEEN / IDAHO SOIL & WATER CONSERVATION COMMISSION / NOVEMBER 2019



Commission water quality resource conservationist Jon Beals is joined with the basin's capture of large amounts of silt and sediment in summer 2019.

Big sediment-control project in Canyon County achieves big results
Part 2 of a series focusing on water quality in the Boise River watershed. It follows a story last month about Christopher Swain swimming the length of the Boise River to raise awareness about water quality issues in the watershed.

By Steve Stuebner
Jon Beals, water quality conservationist for the Idaho Soil and Water Conservation Commission, provided a tour last week of a new, 9-acre sediment catch-basin directly adjacent to the Farmers' Co-Operative Ditch Company canal near Parma.

Walking next to the sediment basin, Beals pointed out a tall pile of sediment and silt that had accumulated in the first year of operations. "That's a lot of dirt!"

Indeed, it was. Irrigation season is winding down, and Farmers' Co-Operative Ditch Company officials have yet

to remove the silt and sediment from the elaborate catch basin, so they don't know how much was captured. It's designed to take up to 2,000 tons of sediment per year.

"It's doing what it's supposed to do," Beals said.

SENATE AGRICULTURAL AFFAIRS COMMITTEE

Annual Report & FY 2019 PERFORMANCE REPORT

Idaho Soil & Water
Conservation
Commission

Conservation the Idaho Way: Sowing the Seeds of Stewardship



Senate Ag Affairs
February 2020

established
1939

Conservation the Idaho Way: Sowing the Seeds of Stewardship



CONSERVATION COMMISSION

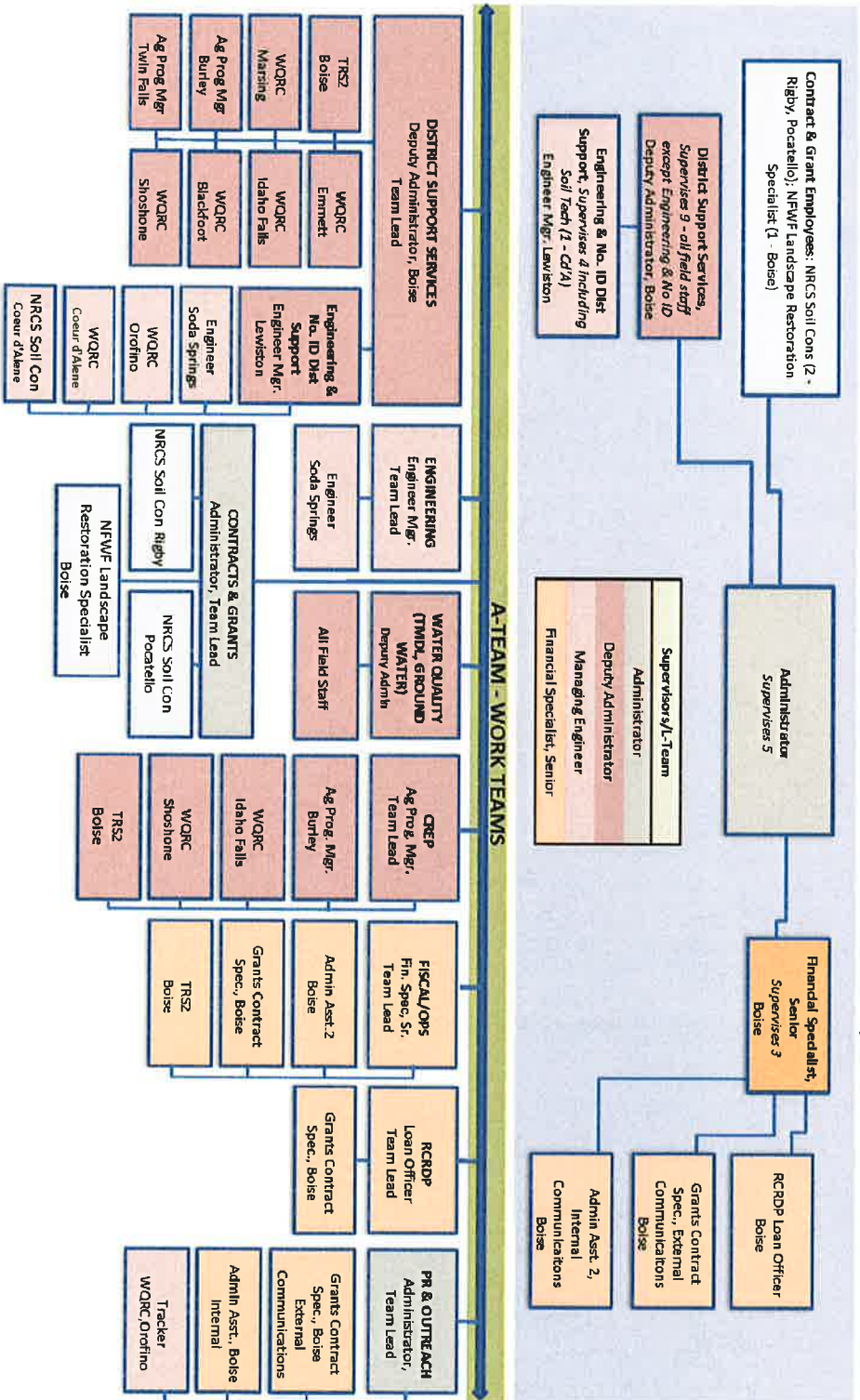
Senate Ag Affairs
February 2020

established
1939

Conservation the Idaho Way: Saving the Seeds of Stewardship



IDAHO SOIL & WATER CONSERVATION COMMISSION ORGANIZATIONAL CHART -- JULY 8, 2019



OUR CORE FUNCTIONS

- CONSERVATION DISTRICT TECHNICAL & FINANCIAL SUPPORT
- INCENTIVE-BASED CONSERVATION PROGRAMS AND SERVICES
- EDUCATION & OUTREACH TO PARTNERS, DECISION MAKERS, AND THE PUBLIC

Conservation the Idaho Way: Sowing the Seeds of Stewardship



REVENUES

	FY 2016	FY 2017	FY 2018	FY 2019
General Fund	\$2,590,700	\$2,730,900	2,759,200	2,659,200
Receipts	29,600	300	33,400	11,100
RCRDP Loan Program	960,800	910,800	889,100	722,600
SRF Loan Program	99,300	86,300	92,300	92,300
Federal Grant Funds	0	0	<u>170,900</u>	<u>201,800</u>
Total	\$3,680,400	\$3,728,300	3,944,900	3,687,000

EXPENDITURES

	FY 2016	FY 2017	FY 2018	FY 2019
Personnel Costs	\$1,239,400	\$1,331,000	1,368,500	1,620,127
Operating Expenditures	272,100*	290,500	329,800	341,802
Capital Outlay	80,100	74,100	111,200	3,425
Trustee/Benefit Payments	1,253,200	1,353,200	1,253,200	1,253,200
RCRDP Loan Disbursements	415,200	604,200	939,100	305,800
DEQ Loan	<u>86,700</u>	<u>\$73,700</u>	79,700	104,700
Federal Grant Funds			<u>136,600</u>	<u>270,000</u>
Total	\$3,346,700*	\$3,726,700	\$4,218,100	3,899,054

Conservation the Idaho Way: Saving the Seeds of Stewardship



RULE CHANGES

2 Agency Rules (removed 2)	As of July 1, 2019
1 Agency Rule (combined 2)	As of 1/1/2020
Number of Words Removed	4,662
Number of Restrictions Removed	79

Conservation the Idaho Way: Sowing the Seeds of Stewardship

FY 2019 STATE GENERAL FUND DISTRICT SUPPORT

\$ 1.25 million from Trustee & Benefits Fund

Each district receives:

- \$11,300 base & operating, capacity building funding
- Local matching funds - ~\$25,000 AVE (mean) per District (\$11,187 - after 1% rescission - lowest allocation and 2 Districts capped @ \$50,000)
- \$10,000 distributed equally among 6 regions for outreach/ed
- No project funding

Conservation the State Way: Sowing the Seeds of Stewardship



FY 2019 State Technical Assistance

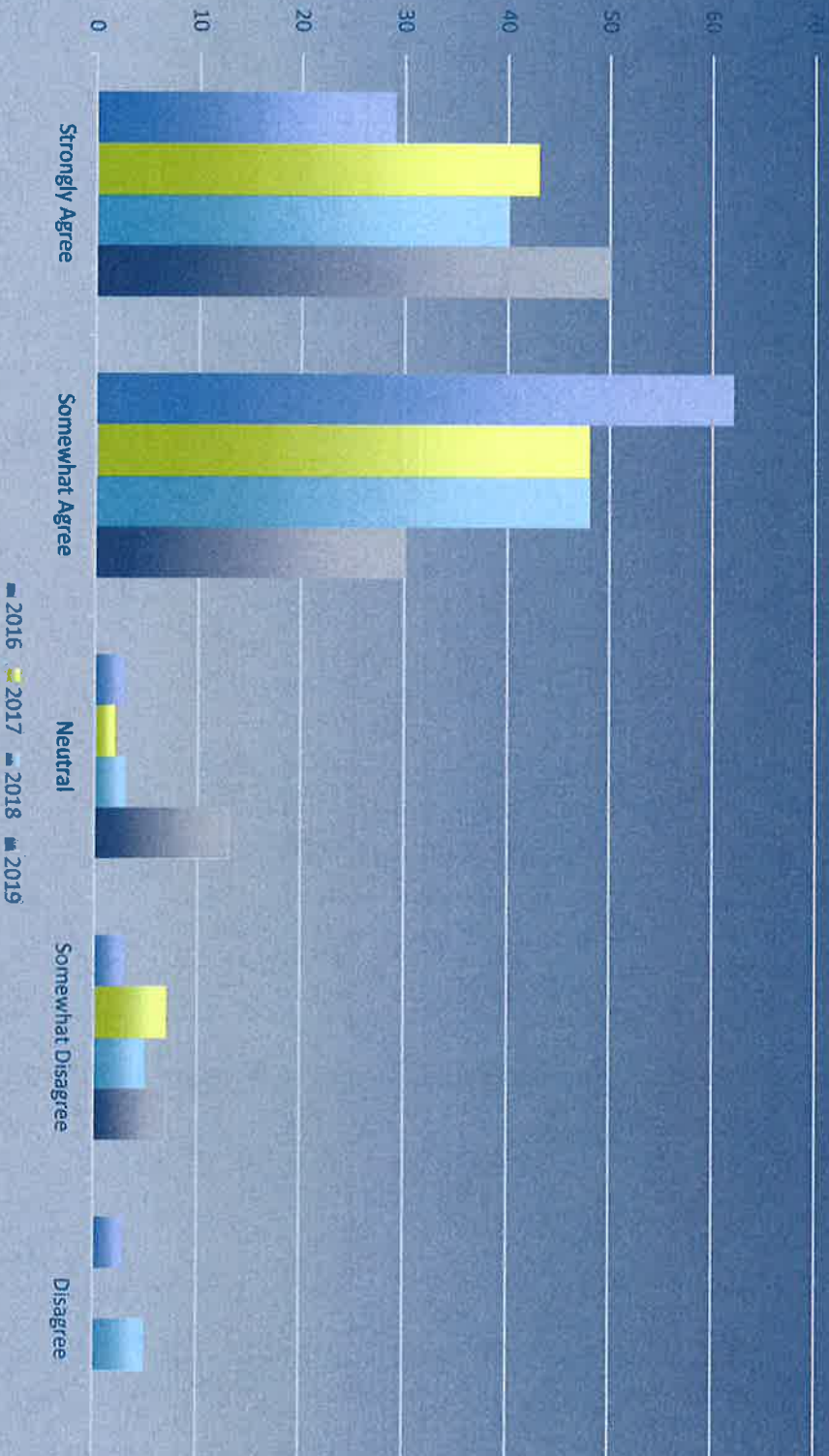
- 7,654/6,061 hrs. requested/awarded
- Assisted 40 districts with projects (29 new, 64 ongoing)
- 536 landowners served



Conservation the Idaho Way: Saving the Seeds of Stewardship

DISTRICT SATISFACTION (with Commission assistance)

FY 2019



Conservation the Idaho Way: Sowing the Seeds of Stewardship



Conservation Reserve Enhancement Program

FY 2019

- 178 total contracts
- 18,161 total acres
- 36,322 acre ft. water conserved

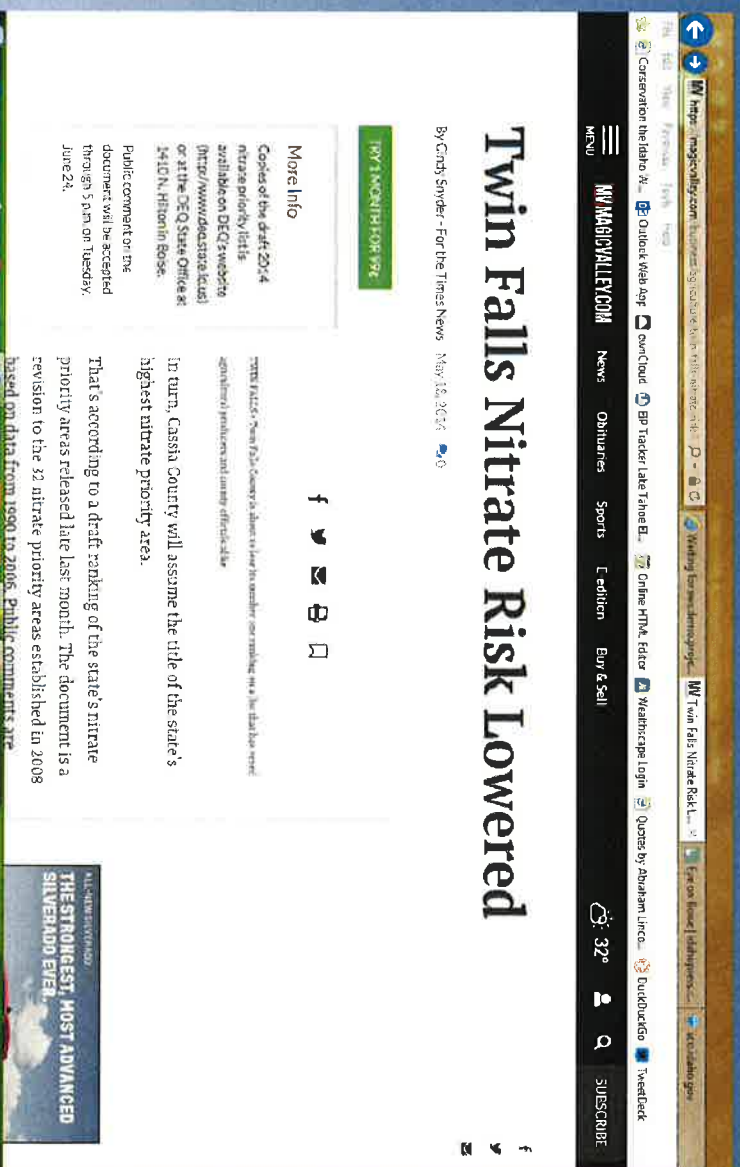


Conservation the Idaho Way: Saving the Seeds of Stewardship

Slide #11



GROUND WATER QUALITY/ NITRATE PRIORITY AREAS



FY 2019

- 47,704 acres treated (37,700 targeted)
- 152,500 #s nitrates reduced (147,000 targeted)
- 30,800 #s phosphorus reduced (29,500 targeted)
- 155,500 tons sediment reduced (150,500 targeted)

Conservation the Idaho Way: Sowing the Seeds of Stewardship



RCRDP LOAN PROGRAM

FY 2019 RCRDP Loan Program

- 7 new loans
- \$~400,000 in new conservation projects
- 43 inquiries received
- 19 applications submitted
- 3 applications denied or withdrawn

Conservation the Idaho Way: Sowing the Seeds of Stewardship



TMDL IMPLEMENTATION PLANS

FY 2018

Completed plans

10

Plans in progress

12

Plans pending review,
addendums

10



Conservation the Idaho Way: Sowing the Seeds of Stewardship



Senate Ag Affairs
February 2020

TELLING OUR STORY Projects

established
1939

Conservation the Idaho Way | 5
https://swdemo.projectirma.com



Conservation the Idaho Way

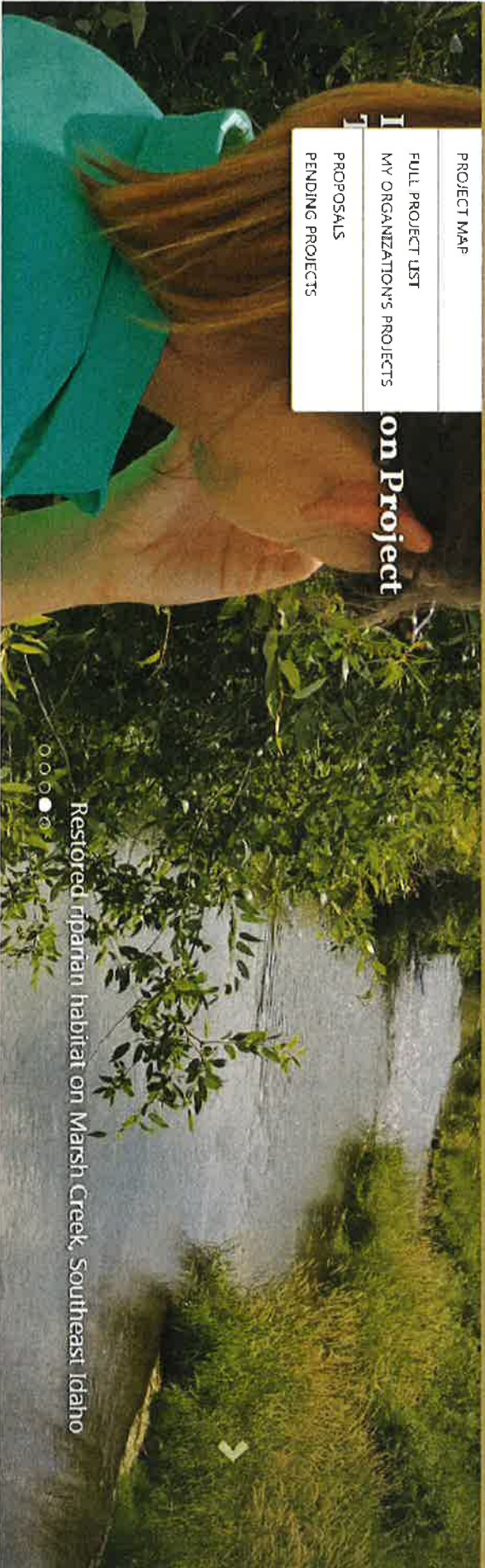
Project Name or Description



ABOUT PROJECTS PROGRAM INFO RESULTS MANAGE

- PROJECT MAP
- FULL PROJECT LIST
- MY ORGANIZATION'S PROJECTS
- PROPOSALS
- PENDING PROJECTS

WELCOME TERI MURRISON HELP



Restored riparian habitat on Marsh Creek, Southeast Idaho

lake-creek-780-fac...pdf

Show all

Conservation the Idaho Way: Saving the Seeds of Stewardship



SOIL & WATER
CONSERVATION COMMISSION

Slide #16

TELLING OUR STORY Project Map: programs



Project Map

This page displays a map of all Projects entered in the system. Use the legend control on the top right of the map to see watershed or organization boundaries on the map. Click the mapped Project points to learn more about a particular project.

Color Projects by: Stage Filter Projects by: Program 32 of 32 selected Link to this map

To zoom, hold down Shift and drag a rectangle.

- Monitoring
- Rangeland Health
- Forest Roads, Bridges, and Culverts
- Forest Fuels Reduction
- Forest Restoration
- Sage Grouse
- Anadromous and Threatened/Endangered Fish
- Watershed Restoration
- Confined Animal Feeding Operations (CAFO)
- District Capacity Building Assistance (DCBA)
- Partner Support (non-SWCC)
- Competitions
- Events, Tours, Workshops, and Conferences
- Sagebrush Landscape Restoration
- Other Habitat and Species
- Agricultural Easements

Conservation the Idaho Way: Seeding the Seeds of Stewardship

Senate Ag Affairs
February 2020

TELLING OUR STORY Program Info

established
1939



Conservation the Idaho Way

ABOUT PROJECTS PROGRAM INFO RESULTS MANAGE

WELCOME TERI MURRISON HELP

Project Name or Description



Performance

To demonstrate co
Performance Meas

- FOCUS AREAS
- PROJECT THEMES
- PERFORMANCE MEASURES
- WATERSHEDS
- LEGISLATIVE DISTRICTS
- CONGRESSIONAL DISTRICTS
- ORGANIZATIONS
- FUNDING SOURCES

agency of publicly-funded investments, and to ensure ongoing support of projects, the participating SCDs track and report on the
Measure to see detailed accomplishment reporting.

Edit Sort Order

Performance	Unit	Type	Description	# of Subcategories	# of Projects	Primary Focus
Division (number)	linear feet	Action		0	18	
Division (number)	number	Action		0	2	
Drip Irrigation System (number)	number	Action		0	0	
Engineering and Technical Assistance	hours	Action	Number of hours requested, allocated and provided to support district operators	3	155	Conservative
Engineering Designs Produced	number	Action	Number of engineering designs produced to support a project or program	0	11	Conservative
Expendable Watercourse Planting (acres)	acres	Action		0	1	
Fence (linear feet)	linear feet	Action		0	196	

Conservation the Idaho Way: Sowing the Seeds of Stewardship



SOIL & WATER
CONSERVATION COMMISSION

Slide #18

Senate Ag Affairs
February 2020

established
1939

TELLING OUR STORY Project Performance Measures



Conservation the Idaho Way

Project Name or Description



Performance Measures

To demonstrate cost effectiveness and improve transparency of publicly-funded investments, and to ensure ongoing support of projects, the participating SCDDs track and report on the Performance Measures listed here. Click a Performance Measure to see detailed accomplishment reporting.

Edit Sort Order

Currently viewing 245 of 245 Performance Measures

Performance Measure	Unit	Type	Description	# of Subcategories	# of Projects	Primary Focus
Diversion (linear feet)	linear feet	Action		0	18	
Diversion (number)	number	Action		0	2	
Drip Irrigation System (number)	number	Action		0	0	
Engineering and Technical Assistance	hours	Action	Number of hours requested, allocated and provided to support district operations.	3	185	Conservative
Engineering Designs produced	number	Action	Number of engineering designs produced to support a project or program.	0	11	Conservative
Emergency Watercourse Planting (acres)	acres	Action		0	1	
Fence (linear feet)	linear feet	Action		0	196	

Conservation the Idaho Way: Sowing the Seeds of Stewardship



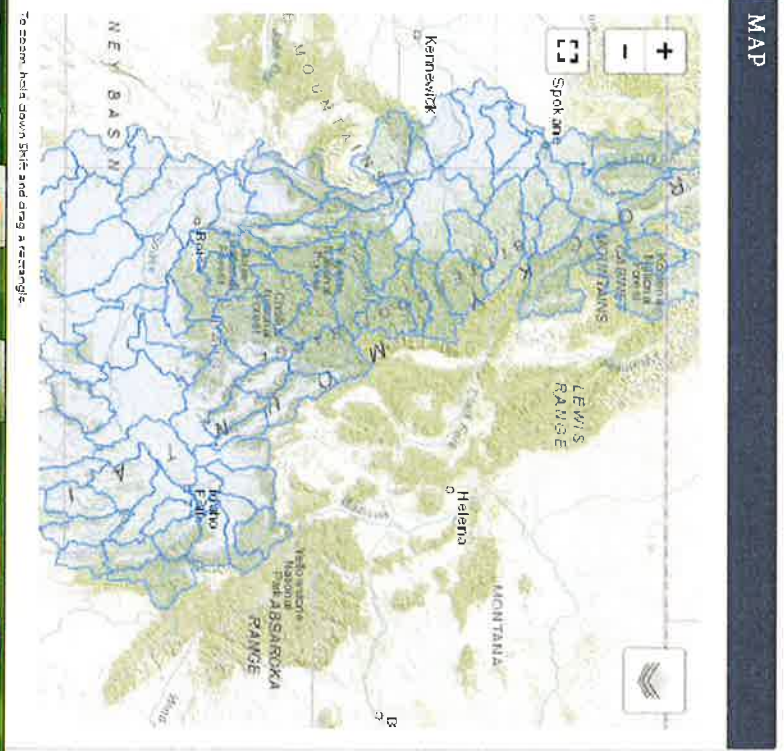
SOIL & WATER
CONSERVATION COMMISSION

Senate Ag Affairs
February 2020

Established
1939

TELLING OUR STORY Watersheds

Watersheds



MAP

WATERSHEDS

Currently viewing 87 of 87 Watersheds

Reset Download Table

Watershed	# of Projects
C.L. Sittle Reservoir (17050101)	8
Carney (17060201)	68
Capital Bear (16010101)	13
Clearwater (17060301)	186
Clearwater Alpine Lake (17010101)	215
Curew Valley (16030301)	1
East Little Owl/Tree (17030101)	0
Greene (17040101)	5
Greys-Hooped (17040101)	0
Vernant (17040301)	16
Felis Canyon (17060101)	3
Idaho Falls (17040201)	24
Jordan (17050101)	0
Shirley-Walcott (17040301)	52

Conservation the Idaho Way: Sowing the Seeds of Stewardship

Slide #20



Senate Ag Affairs
February 2020

established
1939

TELLING OUR STORY Legislative Districts



Conservation the Idaho Way

ABOUT ▾ PROJECTS ▾ PROGRAM INFO ▾ RESULTS ▾ MANAGE ▾

WELCOME TERRI MURRISON ▾ HELP ▾

Project Name or Description



Legislative Districts

MAP



LEGISLATIVE DISTRICTS

Currently viewing 35 of 35 Legislative Districts

Reset Download Table

Legislative District	# of Projects
State District 21	0
State District 22	53
State District 23	134
State District 24	6
State District 25	386
State District 26	273
State District 27	65
State District 28	53

Conservation the Idaho Way: Seeding the Seeds of Stewardship

Slide #21



Senate Ag Affairs
February 2020

established
1939

Conservation the Idaho Way: Saving the Seeds of Stewardship

Slide #22



idaho.gov/ag

Senate Ag Affairs
February 2020

Established
1939

THANK YOU/QUESTIONS?

FOR MORE INFO, CONTACT
TERI MURRISON, ADMINISTRATOR
208-322-1790



Conservation the Idaho Way: Sowing the Seeds of Stewardship



SOIL & WATER
CONSERVATION COMMISSION

Slide #23