

# IDAHO

Division of  
Professional-Technical Education

ATTACHMENT B

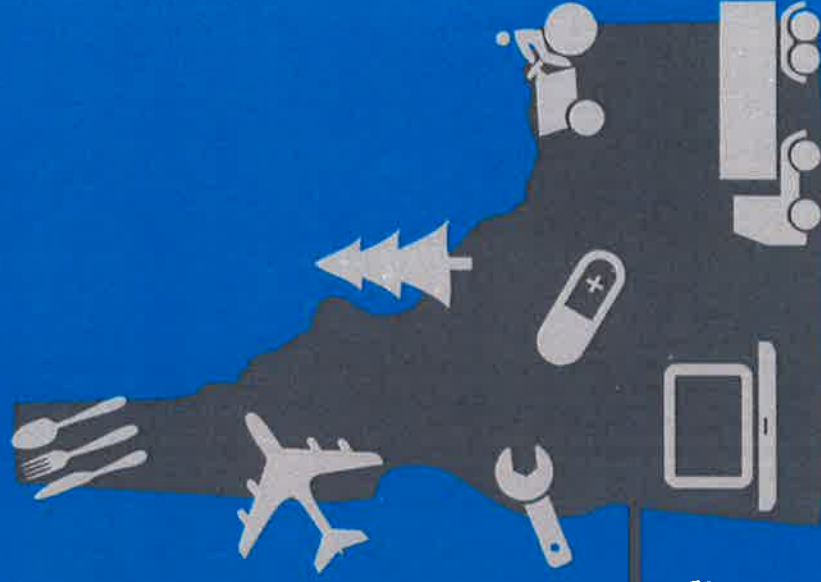
## Improving Idaho's Talent Pipeline

2016 Senate Education Committee

Dwight Johnson, State Administrator

We prepare Idaho's youth  
and adults for high-skill,  
in-demand careers...

and create a skilled talent pipeline  
for Idaho's industry.

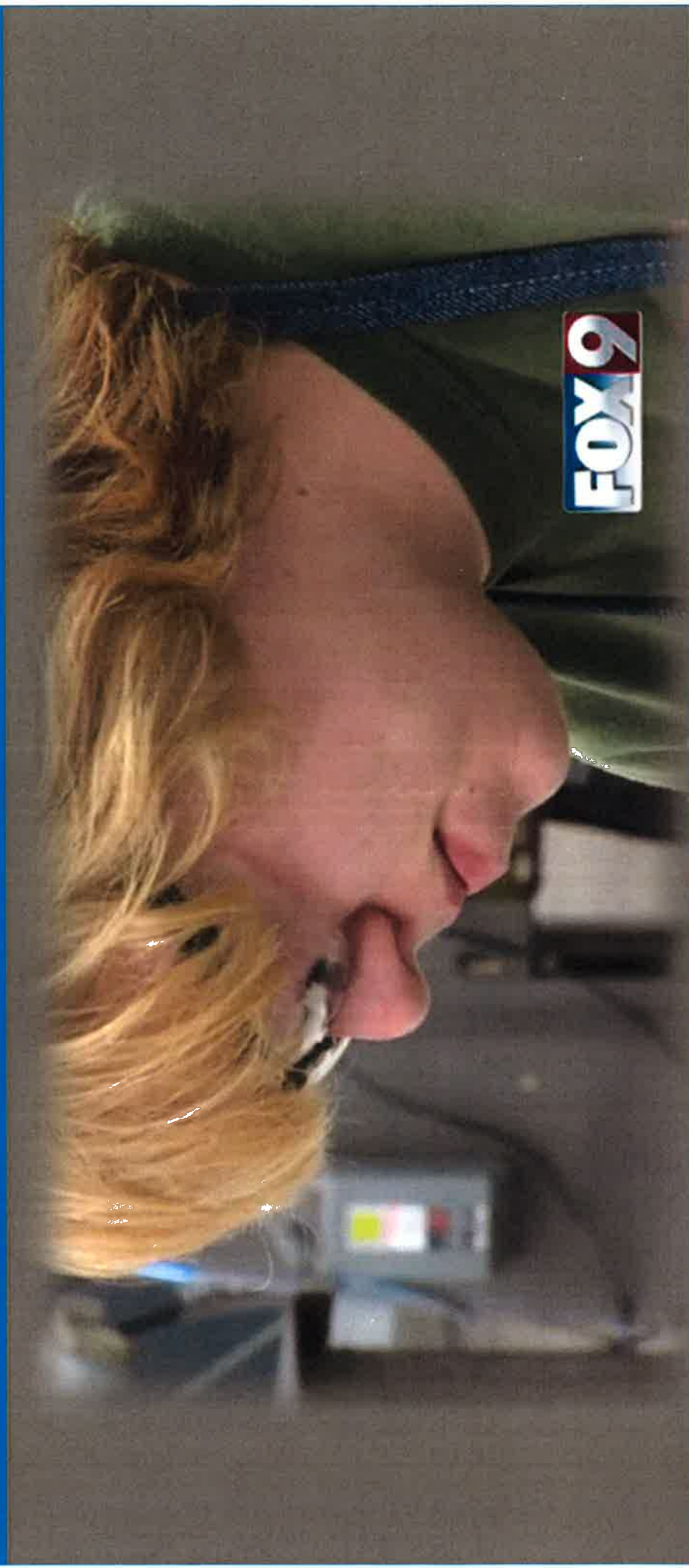


# IDAHO

Division of  
Professional-Technical Education

Enhance PTE Image by Communicating Value

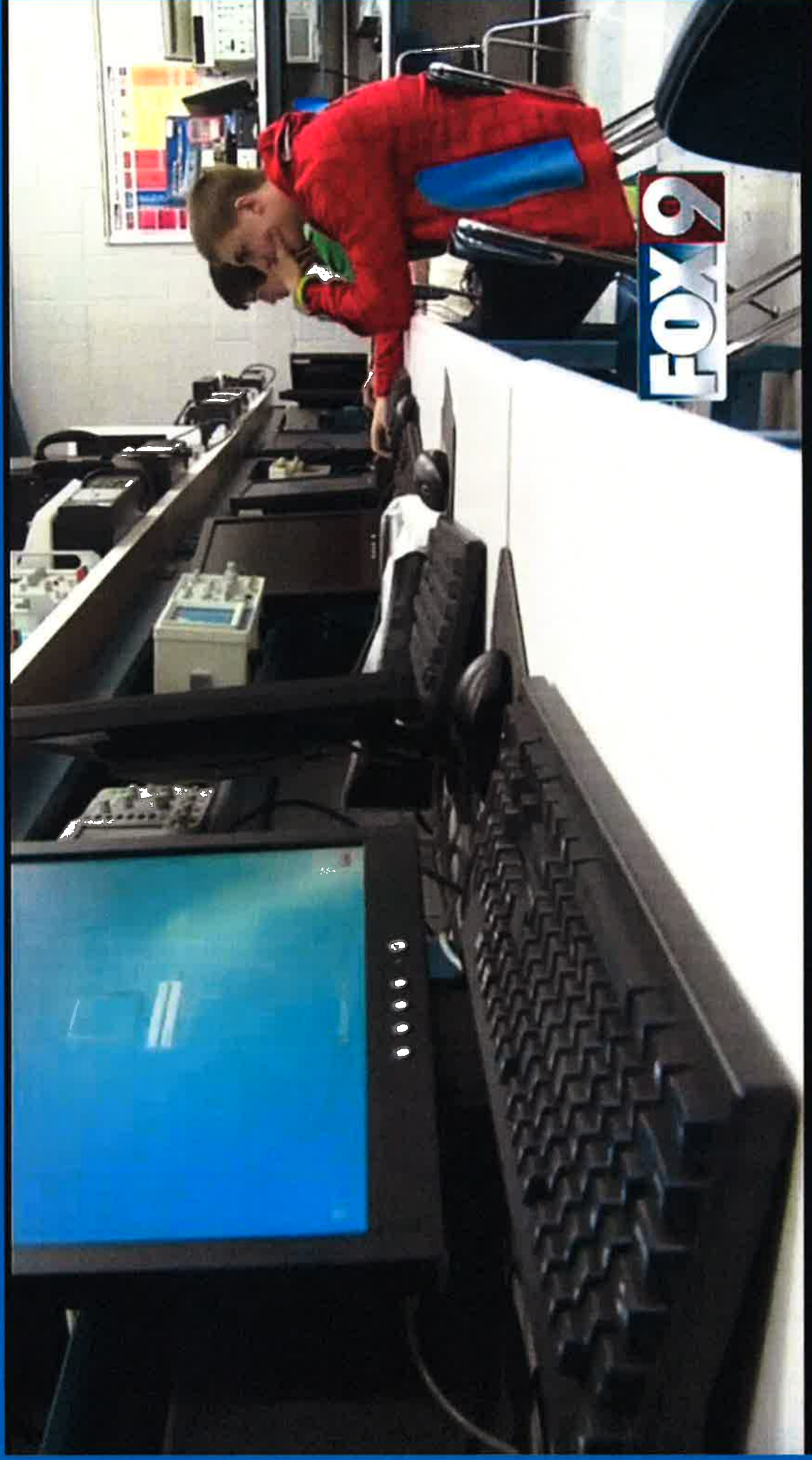
★ Name Change to Career & Technical Education



Edmunds, Michelle (2015, November 3) *Professional technical education advocates look to shake stereotypes* [video file]. Retrieved from: <http://www.kivitv.com/news/professional-technical-education-advocates-look-to-shake-stereotypes>

# IDAHO

## Division of Professional-Technical Education



Edmunds, Michelle (2015, November 3) Professional technical education advocates look to shake stereotypes [video file]. Retrieved from: <http://www.kivitv.com/news/professional-technical-education-advocates-look-to-shake-stereotypes>



# IDAHO

Division of  
Professional-Technical Education

## What is professional-technical education?



Agriculture &  
Natural Resources



Family & Consumer  
Sciences



Health  
Professions



Engineering &  
Technology



Business  
Management &  
Marketing



Skilled & Technical  
Sciences



PTE is the nexus between education and employment.

# IDAHO

## Division of Professional-Technical Education



Agriculture &  
Natural Resources



Family & Consumer  
Sciences



Health  
Professions



Skilled & Technical  
Sciences



Careers in:

- Engineering & Technology
- Engineering Technology
- Computer Networking
- Media Technologies
- Web Design
- And many more!

# IDAHO

## Division of Professional-Technical Education



Agriculture &  
Natural Resources



Engineering &  
Technology



Health  
Professions

Careers in:

- Medical Records
- Nursing
- Physical Therapist Assistant
- and many more!

Business  
Management &  
Marketing

Business & Technical  
Sciences

# IDAHO

## Division of Professional-Technical Education



Agriculture &  
Natural Resources



Family & Consumer  
Sciences



Health  
Professions



Engineering &  
Technology

Careers in:

- Precision Machining
- Diesel Technology
- Electronics
- Welding
- and many more!

Skilled & Technical  
Sciences





# IDAHO

## Division of Professional-Technical Education

### The value of professional-technical education

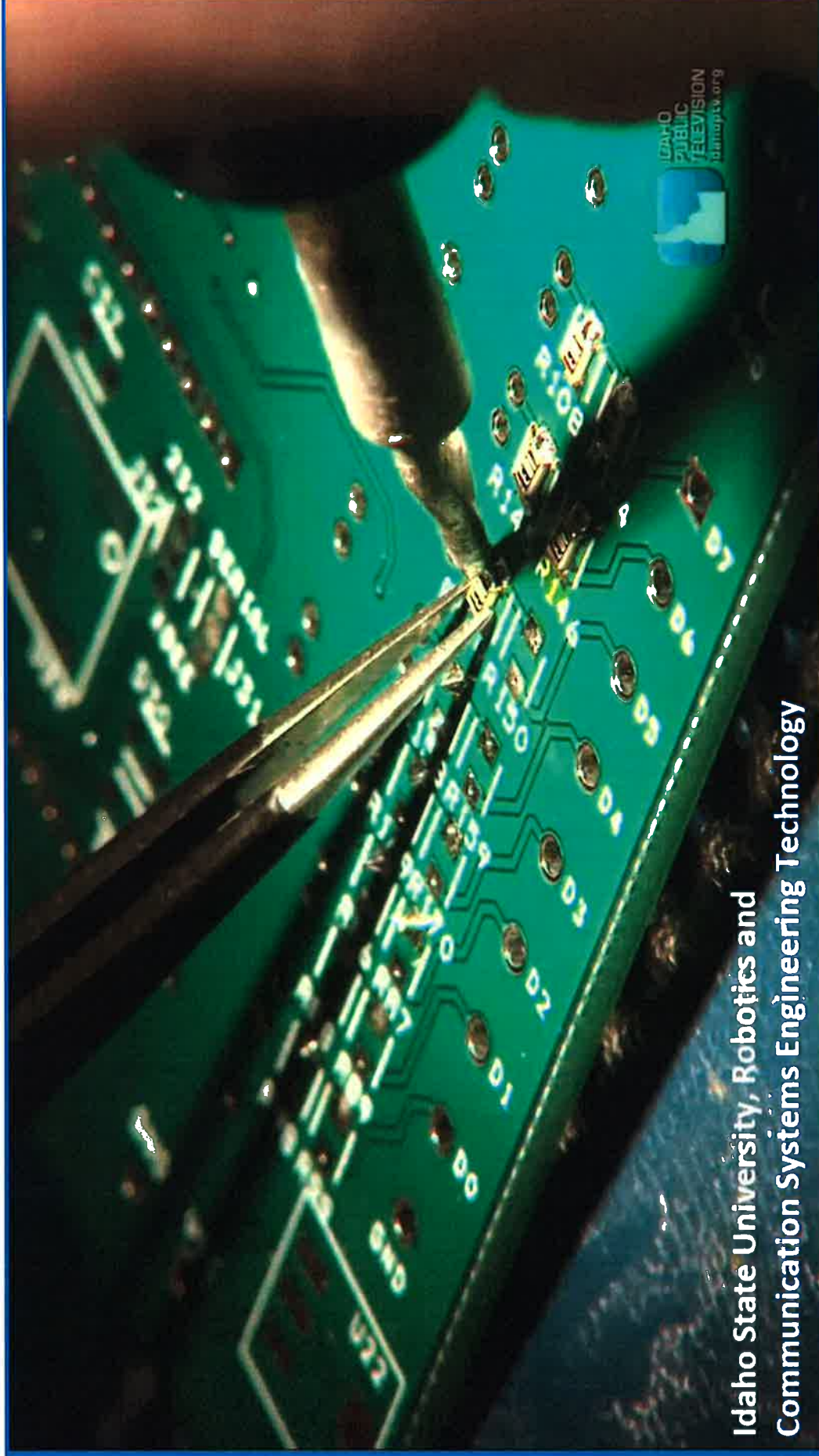
- Connects students to real careers.
- Provides a talent pipeline for Idaho's business.
- Makes education meaningful through applied learning.





# IDAHO

Division of  
Professional-Technical Education



Idaho State University, Robotics and  
Communication Systems Engineering Technology

*Journey to Career* [video files]. c Idaho Public Television, Funding provided by U.S. Department of Education through the College Access Challenge Grant, produced in partnership with Idaho State Board of Education  
<https://drive.google.com/file/d/0B8eJYhQJ6hBsMEIRmZnU3RqcIU/view?pref=2&pli=1>

# IDAHO

Division of  
Professional-Technical Education

## Invest in Idaho's Talent Pipeline

### ★ Postsecondary Budget Request

---

30 Programs    Health Care, Information Tech, Manufacturing, Transportation

High Demand    2,200 annual job openings

Current  
Graduates    542 with 100% placement (850+ on program waitlists)

High Wages    Starting salaries: \$30,500-\$72,000

**Governor's  
Recommendation**    **\$3,791,200**

**Projected  
Results**    **76% increase in graduates (an additional 410 students)**  
**48% reduction in student waiting list**



# IDAHO

Division of  
Professional-Technical Education

## ★ Secondary Budget Request

Professional-Technical high schools

Governor's Recommendation: \$231,900

Agriculture and natural resource  
program incentives

Governor's Recommendation: \$325,000

High School PTE students: **85,000+**  
PTE Concentrators: **4,800**





# IDAHO

## Division of Professional-Technical Education

### Program Alignment: A meaningful head start for PTE students

#### High School

- Career Exploration
- Skill Introduction
- Workplace Readiness
- College Credit / Industry Certification

#### Program Alignment

#### College

- Advanced Skills
- Industry Certification
- Postsecondary Credentials

★ \$20,000 Governor's Recommendation

# IDAHO

Division of  
Professional-Technical Education

## Idaho SkillStack

Communicate real skills with  
PTE's online micro-certification /  
"badging" platform.

The screenshot shows the SkillStack website interface. At the top, there is a navigation bar with the SkillStack logo, a search bar, and links for REGISTER, LOG IN, and HELP. Below the navigation bar is a large grid of 48 icons representing various skills and professions, such as a chef, a pilot, a scientist, and a construction worker. In the center, a man in a light blue shirt and striped tie is shown from the chest up, looking towards the camera. Below him is the headline "It's all about your Skills" followed by a paragraph: "Skill based learning is not just about learning something, but about learning to show for it. With a SkillStack badge, you can show the world what you've accomplished. Come and see what badges you can earn and start badging your skills today." Below this text is a "Learn More" button. To the right of the man are three columns of text: "Individuals" (highlighted in red), "Employers" (highlighted in green), and "Educators" (highlighted in blue). Each column has a "Learn More" button. At the bottom of the page, there is a footer with the SkillStack logo, the IDAHO logo, and the text "Division of Professional-Technical Education".



# IDAHO

Division of  
Professional-Technical Education



## **PTE Digital:**

Expanding access to PTE Courses.

- Courses available or coming soon in: Information Technology, Health Care, Business & Marketing

★ **\$20,000 Governor's Recommendation**



# IDAHO

Division of  
Professional-Technical Education

## Improve Career Counseling

### A collaborative approach

- Promoting Proven Models
- Creating a Common Portal



Career  
Information  
System



Governor's Recommendation: \$5,000,000

# IDAHO

Division of  
Professional-Technical Education

## Support for Governor's Recommendations

### Increase Opportunity Scholarships

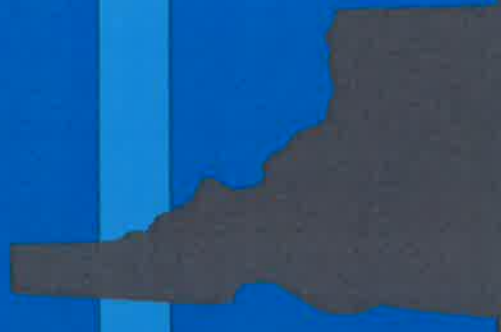
Governor's Recommendation: \$5,000,000

### Adult Degree Completion Scholarship

Governor's Recommendation: \$5,000,000

### Eastern Idaho Technical College becoming a Community College

Governor's Recommendation: \$5,000,000



# IDAHO

## Division of Professional-Technical Education

### PTE Students Go On, and succeed.

- **94%** of PTE high school graduates found a job or moved into postsecondary education.
- **92%** of technical college completers found jobs or continued their education.
- **17 out of 20** of the most in-demand jobs are associated with PTE pathways.





# IDAHO

## Division of Professional-Technical Education

### Critical Workforce Ratio 1:2:7

#### Required Education

**1** Graduate Degree

**2** Bachelor Degrees

**7** 1-Year Cert OR 2-Year Degrees

#### Available Jobs



[Video](#)

<sup>2</sup> Gray, K. & Herr, E. (2006). *Other Ways to Win: Creating Alternatives for High School Graduates*. Third Edition. Thousand Oaks: Corwin Press. U.S. Bureau of Labor Statistics. *Occupational Outlook Handbook 2012-13*. Office of Occupational Statistics and Employment Projections.

*Journey to Career* [video files]. c Idaho Public Television, Funding provided by U.S. Department of Education through the College Access Challenge Grant, produced in partnership with Idaho State Board of Education  
<https://drive.google.com/file/d/0B8eJYhQJ6hBscdnUWFqckIGcjQ/view?pref=2&pli=1>

# IDAHO

Division of  
Professional-Technical Education



**College of Western Idaho, Law Enforcement**

*Journey to Career* [video files]. c Idaho Public Television, Funding provided by U.S. Department of Education through the College Access Challenge Grant, produced in partnership with Idaho State Board of Education  
<https://drive.google.com/file/d/0B8eJYhQJ6hBskdnUWFqckIGcjQ/view?pref=2&pli=1>