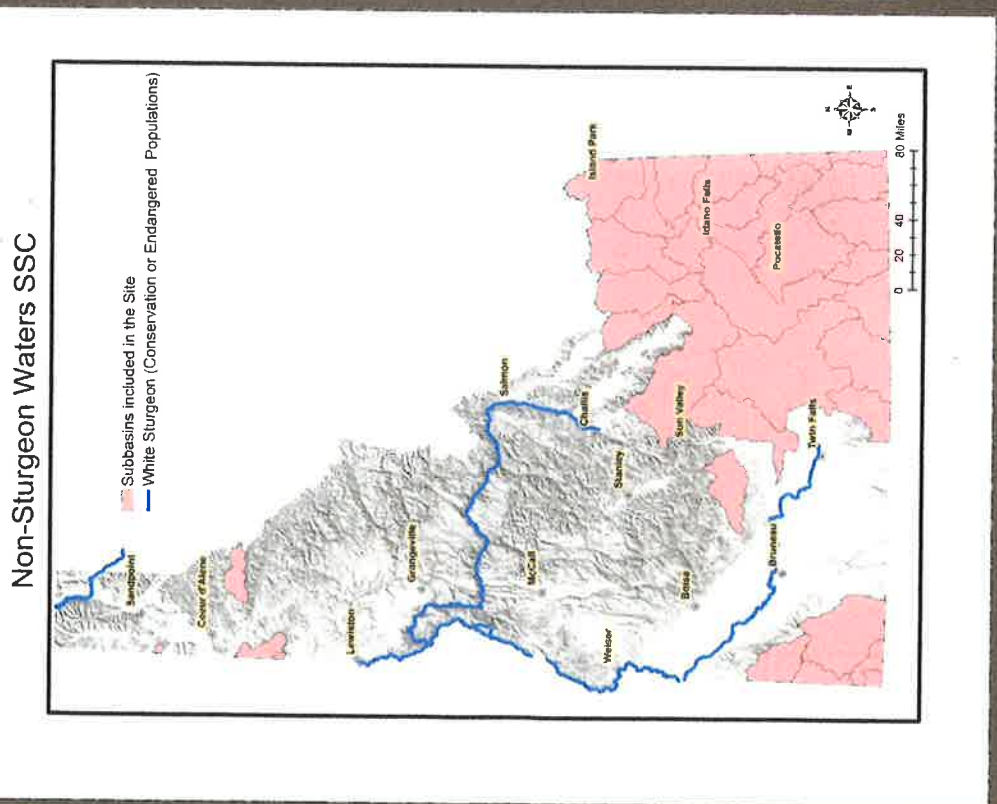


# Portions of Idaho

## Site-specific criterion - 287.05



Selenium Criterion Version	Chronic		
	Fish Tissue (mg/kg dw)	Whole Body	Muscle
Idaho Proposed	15.1	8.5	11.3
Portions	19.0	9.5	13.1

# Site Specific Criteria 287.01-287.04

