

Annual Report

IDAHO PUBLIC CHARTER SCHOOL COMMISSION

Commission Composition



Alan Reed, Chair
Term Ends: 2022
Appt. By: Pro Tem



Kathleen "Kitty" Kunz
Renewal Committee
Term Ends: 2023
Appt. By: Pro Tem



Julie Van Orden
Petition Committee
Term Ends: 2022
Appt. By: Speaker



Brian Scigliano, Vice Chair
Petition Committee
Term Ends: 2020
Appt. By: Governor



Nils Peterson
Renewal Committee
Term Ends: 2023
Appt. By: Speaker

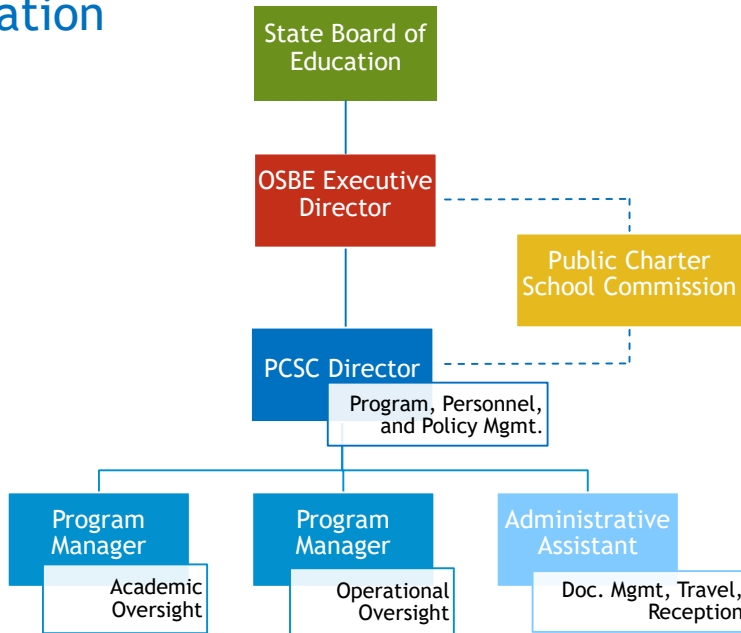


Sherrilynn Bair
Petition Committee
Term Ends: 2020
Appt. By: Governor



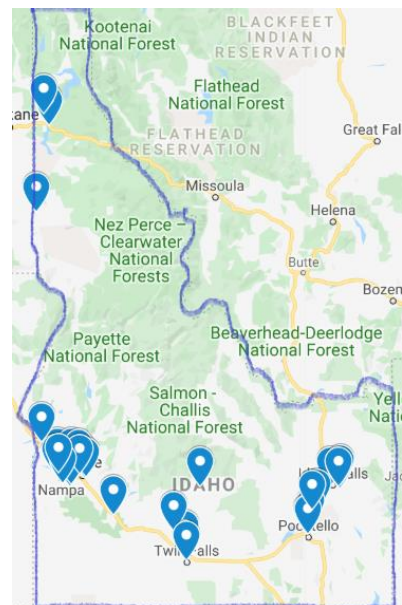
Wanda Quinn
Renewal Committee
Term Ends: 2020
Appt. By: Governor

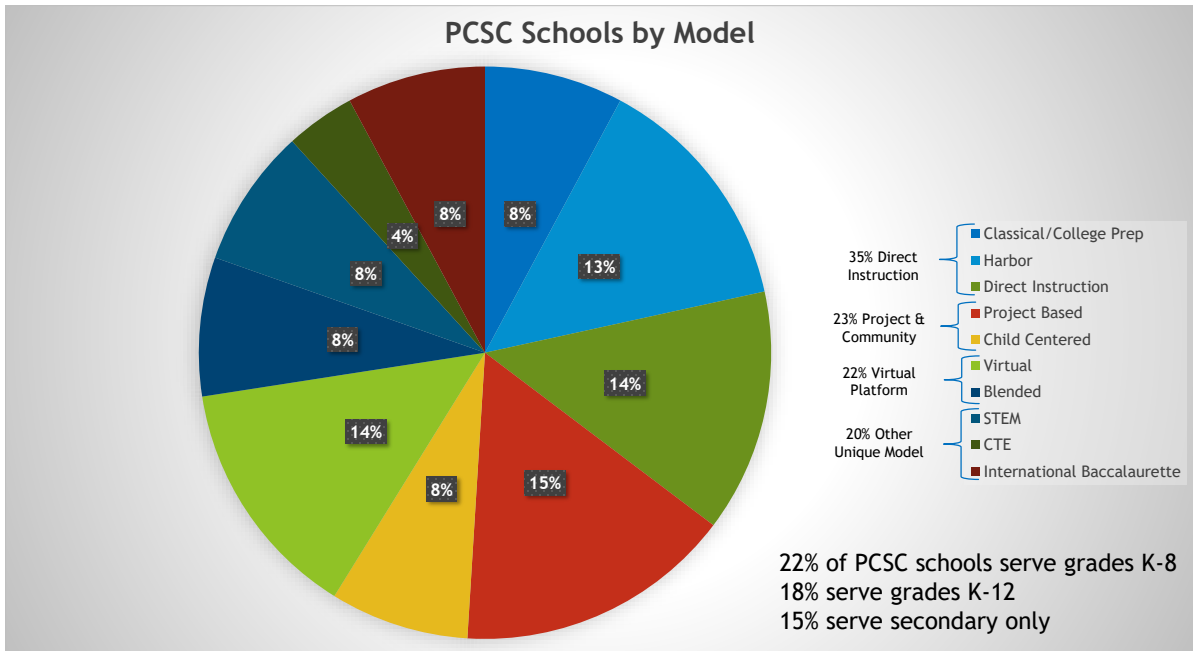
Organization



Schools Served

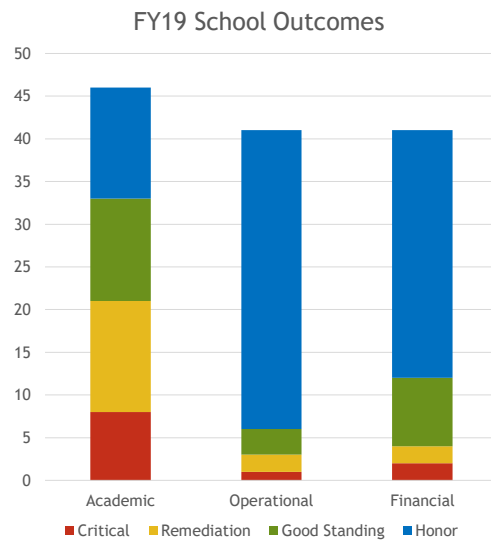
- ▶ The PCSC currently serves 52 schools.
- ▶ PCSC schools served approx. 19,200 in SY18-19
 - ▶ 7% of all students served by public schools
- ▶ The PCSC serves schools throughout the state.
 - ▶ Northern Idaho - 4
 - ▶ Treasure Valley - 20
 - ▶ Central Idaho - 4
 - ▶ Eastern Idaho - 15
 - ▶ Virtual Schools - 7





School Outcomes

- ▶ Academic honor/good = Guaranteed Renewal
- ▶ Operational/Financial critical/remediation = PCSC Intervention
- ▶ Schools with Critical/Remedial Academic Designations
 - ▶ 61% identified as CSI UP, CSI Grad, TSI or ATSI
 - ▶ 3 schools had first year of operations in SY18-19
 - ▶ 4 not identified by the SDE for additional support



Phases of Authorizer Development



Commission Points of Action

- ▶ Petition Hearing (Example: Dec. 2019)
 - ▶ Issue approval, denial, or conditional approval
- ▶ Renewal Hearing (Example: March 2025)
 - ▶ Issue 5-year renewal, 5-year renewal with conditions, or begin revocation proceedings
- ▶ Condition Review (Example: 2027-29)
 - ▶ No action if renewal conditions are met.
 - ▶ May begin revocation proceedings if conditions are not met.



Staff Points of Action

- ▶ Annual Reports
 - ▶ Points awarded/deducted based on performance outcomes
 - ▶ Notes addressing concerns/context
 - ▶ Make reports public
- ▶ Notification of Fiscal Concern
 - ▶ Review annual audits and midterm financial reports
 - ▶ Recommend issuance/removal
- ▶ Intervention/Investigation
 - ▶ Process complaints received
 - ▶ Issue courtesy letters and conduct progress monitoring
 - ▶ Obligatory referral to investigative body (i.e. AG's office, Professional Standards, SDE departments, etc.)



Finding Balance

- | | |
|---|---|
| <ul style="list-style-type: none"> ▶ Educate and Inform <ul style="list-style-type: none"> ▶ Providing annual reports aligned to framework ▶ Communicating policy and procedure ▶ Issuing courtesy letters for minor issues ▶ Conducting interventions for major issues ▶ Monitoring progress | <ul style="list-style-type: none"> ▶ Oversee and Enforce <ul style="list-style-type: none"> ▶ Protecting taxpayers' return on investment ▶ Protecting students' right to education ▶ Providing families with school choice ▶ Reporting to investigative bodies ▶ Making renewal decisions |
|---|---|



PCSC Guiding Documents

▶ Performance Certificate

- ▶ Agreement between authorizer and charter school board that outlines the terms and conditions of the school's operations.

▶ Performance Framework

- ▶ Establishes the expected standards and outcomes (i.e. the risk threshold).

▶ Annual Report

- ▶ Provides a regular update highlighting each school's performance against the established standards.

Priority Projects



Simplify and Align Framework

- ▶ ETA - July 1, 2020
- ▶ Provide greater transparency of expected outcomes
- ▶ Eliminate unnecessary complexity of data calculations and scoring process
- ▶ Capture mission-specific context for individual schools

13

Annual “Report” to School Dashboard

- ▶ ETA - December 2020
- ▶ Present a more user-friendly tool
- ▶ Facilitate access to primary sources of data
- ▶ Empower commissioners to better “know” their schools

14

Communication

- ▶ Utilize committee structure to facilitate direct communication between schools and PCSC by topic
- ▶ Establish and maintain positive authorizer/school relationships
- ▶ Promote inter-agency collaboration

15

Policy Review

- ▶ Timeline - 2020, ongoing
- ▶ Evaluate the alignment of current PCSC policy to the intent of Idaho Code and IDAPA
- ▶ Evaluate the alignment of current PCSC procedure to policy

16

Contact Us

- ▶ Jenn Thompson
Interim Director, Public Charter School Commission
208-332-1583
jenn.thompson@osbe.idaho.gov
- ▶ General Office Contact
208-332-1561
pcsc@osbe.idaho.gov

IDAHO PUBLIC CHARTER SCHOOL COMMISSION

Autonomy, Accountability, Access