



PNWER's Presentation to Idaho's Senate Transportation Committee



Today's Presenters



Matt Morrison

- Executive Director
- PNWER



Bruce Agnew

- Executive Director
- ACES Northwest Network
- PNWER Transportation Co-Chair

About PNWER



PNWER is a public-private partnership chartered by the states of Alaska, Idaho, Montana, Oregon, and Washington; the western Canadian provinces of Alberta, British Columbia, and Saskatchewan; and Yukon and Northwest Territories

- PNWER is recognized by the federal governments as the model for regional and bi-national cooperation because of its proven success. It is the leading forum where people in the policy world and business world come together to determine solutions to regional challenges

PNWER's Transportation & Infrastructure Working Group

Major focus areas

- Innovative Infrastructure Finance
- Autonomous, Electric, Connected, and Shared Vehicles
 - Focusing on freight, air transport, and industrial electrification
- Market Access & Rail Capacity
- Infrastructure Resilience
- Advanced Air Mobility
- Rural Development and Connectivity
 - Especially via broadband access

Benefits to Idaho

- Supported Sandpoint Junction Connector initiative to decrease rail congestion, promote regional growth
- Highlighted Idaho's truck size and weight harmonization efforts to region
- Promoted WGA Electric Vehicles Roadmap Initiative

PNWER Transportation Co-Chairs



Senator Chuck Winder (ID)

- President Pro Tempore of the Idaho Senate
- PNWER Vice President



Bruce Agnew

- Executive Director
- ACES Northwest Network At Cascadia Center

WHY SHOULD YOU ATTEND?

The PNWER Annual Summit provides the opportunity to:

- Learn about key economic issues facing the region
- Collaborate and establish relationships w/ Canadian & U.S. public & private sector leaders
- Strengthen regional networks and cooperation
- Advocate for regional policies and cross-jurisdictional initiatives



10 Provinces,
States, &
Territories



20+ Sessions
& Networking
Breaks



125+ Speakers
from Canada
& the U.S.



500+ Legislators,
Business Leaders,
& Decision Makers

PNWER's 31st Annual Summit

Calgary, Alberta
July 24 - 28, 2022





*Pacific NorthWest
Economic Region*



REGIONAL INFRASTRUCTURE ACCELERATOR

PNWER's RIA Program

RIA Timeline



Early 2010's

PNWER begins advocating for a program to help identify and streamline multi-jurisdictional transportation infrastructure projects

2015

Congress passes the 2015 FAST Act, which includes Section 1441 to "establish a regional infrastructure demonstration program"

2019

Funds were appropriated for FY2020 to create the Regional Infrastructure Accelerator demonstration program

2020

US DOT releases a Notice of Funding Opportunity for the Regional Infrastructure Accelerator Program

2021

PNWER develops a competitive application for the RIA Demonstration Program

PNWER was selected as 1 of 5 Accelerators across the U.S.

2022

PNWER begins work to establish a Regional Infrastructure Accelerator for the Pacific Northwest

What does the PNWER RIA do?



The PNWER RIA is a one stop shop for US DOT infrastructure credit programs and more



RIA accelerates existing state project priorities to streamline economic return



RIA brings private capital to public private partnerships for infrastructure



The PNWER RIA is a go-to leader for multi-state and corridor projects



Identifying Resources

Become a one stop shop for transportation projects with region-wide impacts, pulling together the latest information on DOT, DOE, EPA and other funding sources

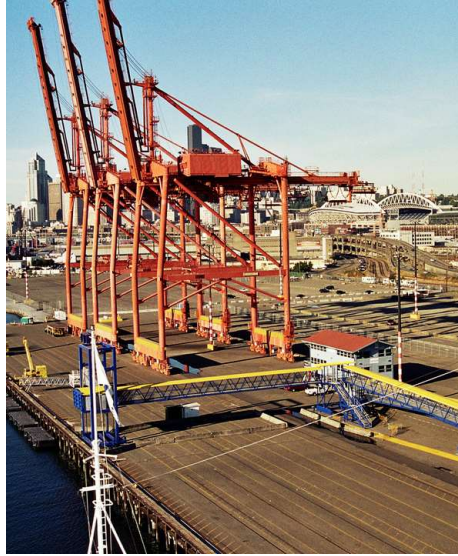


Accelerating Projects

Work with communities and project sponsors to identify innovative financing options and begin regionally important transportation projects

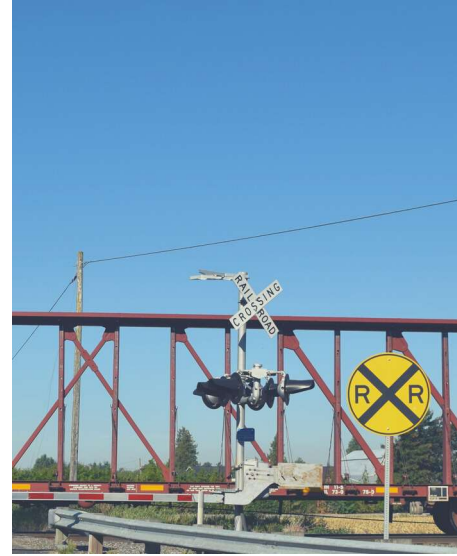
The
Future
of the
RIA:
A Regional
Center of
Excellence

PNWER RIA Program Activities



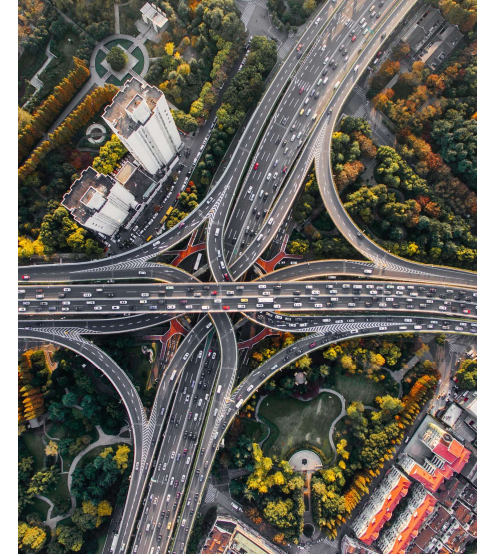
Seaport Emission Reduction

Establish a viable pathway for sustainable CO2 emission reduction in the Port areas of Seattle and Tacoma via drayage truck electrification



Highway-Rail Grade Separation

Assist the rural community of Spokane Valley, WA to utilize TIFIA & other loan programs to address a freight mobility bottleneck



Center of Excellence

Develop capacity within the PNWER RIA to help states better understand TIFIA, RRIF, PABs, and other loan programs, and how to navigate the new IIJA funding sources

How will the RIA work?

Phase 3 Phase 2 Phase 1

Phase 1 - RIA Kickoff

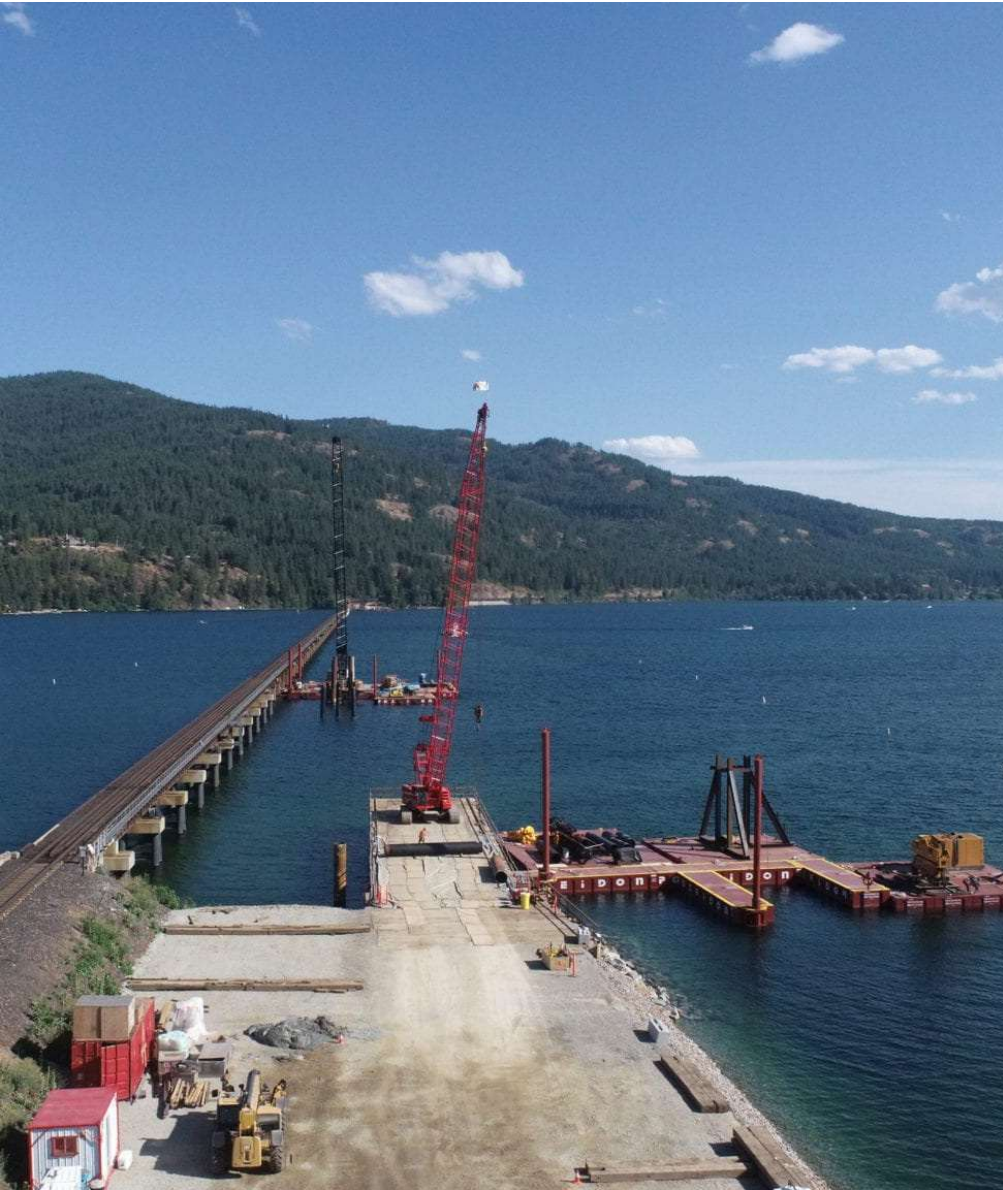
- Convene Advisory Committee
- Establish online presence
- Stakeholder outreach and leadership briefings
- Create & maintain database of funding opportunities

Phase 2 - Identifying & Funding Projects

- Provide technical assistance for first 2 project
- Develop funding matrix
- Solicit applications for next round of projects
- Develop long-term sustainability model

Phase 3 - Moving Towards Sustainability

- Implement long-term sustainability model
- Finalize TIFIA, RRIF, or PAB applications for round 1 projects
- Select second round of projects for acceleration
- Begin acceleration efforts for round 2 of projects



Applying to the PNWER RIA for Project Acceleration

Submitting projects for RIA acceleration is a cooperative process between legislators, community members, Departments of Transportation, and the RIA team.

We are developing a potential project pipeline that looks at transportation projects that are identified, but are not top contenders for state funding. Special attention is paid to projects that have region-wide implications, or cross-jurisdictional boundaries.



Long-Term Vision for the PNWER RIA

Assist communities in understanding innovative financing sources for infrastructure projects, focusing on how to help projects access federal credit programs and public / private financing



The RIA will bring in best practices from Canada and Alaska, specifically the Alaska Industrial Development and Export Authority (AIDEA)

Want to learn more?

VISIT US ONLINE

www.pnwer.org/transportation

www.pnwer.org/pnwer-ria

PHONE

206-443-7723

SEND US AN EMAIL!

Matt Morrison | Matt.Morrison@pnwer.org

Bruce Agnew | bagnew@discovery.org

Betz Mayer | Betz.Mayer@pnwer.org

- Transportation Working Group Manager

