



# “The Leading Advocate for Rural America at the Federal Level.”



USDA Rural Development Idaho  
Presented by State Director Rudy Soto







## USDA Rural Development's Programs -

Consists of Funding for Land & Buildings, Machinery & Equipment, Working Capital, Infrastructure, and Technical Assistance/Training

Idaho: FY 2021 Investment: \$314 Million

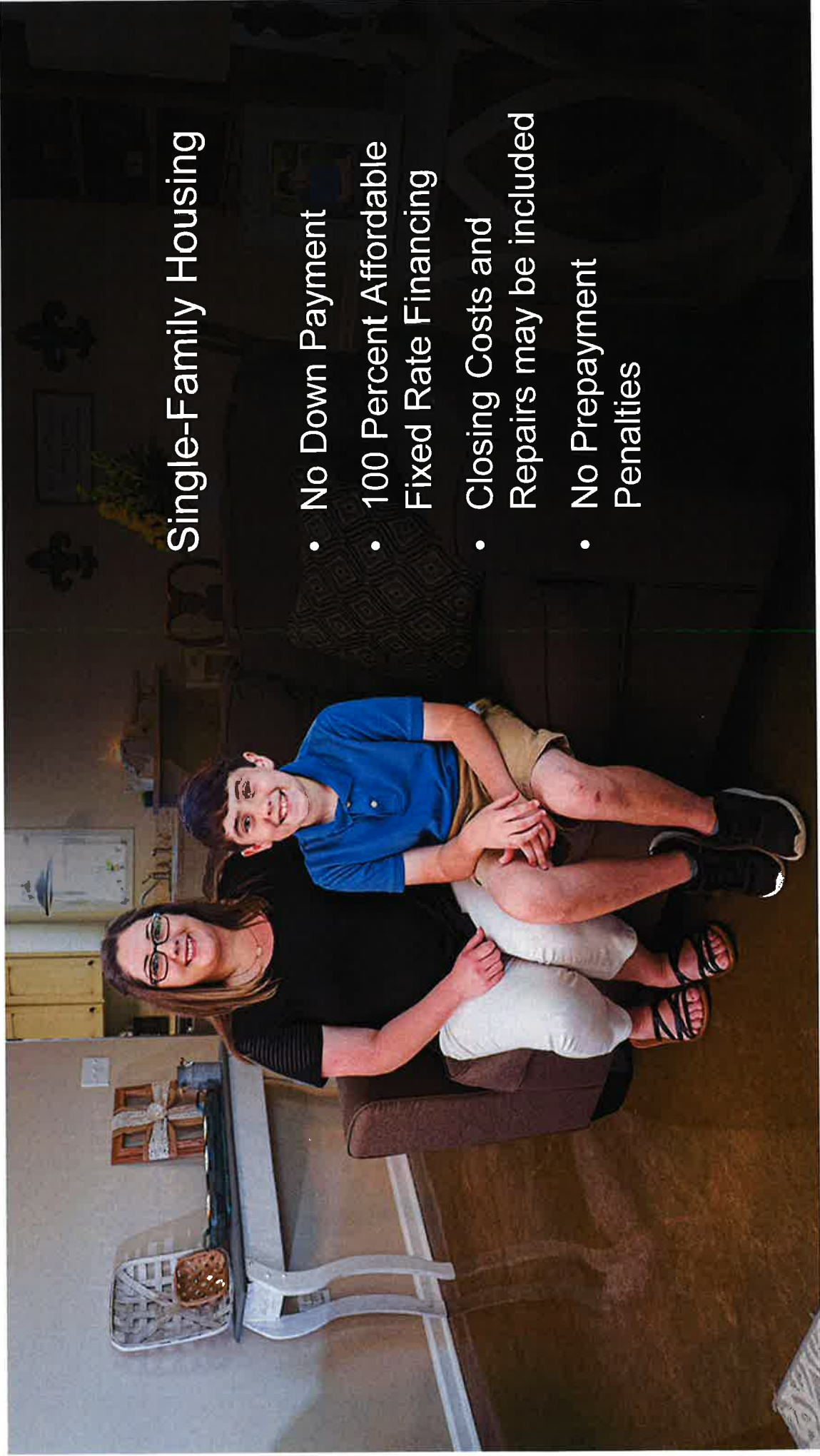
Single Family Housing: \$160.7 Million

Multi-Family Housing: \$20.1 Million

Community Programs: \$79.6 Million

Business Programs: \$46.6 Million

Telecommunications: \$7.0 Million

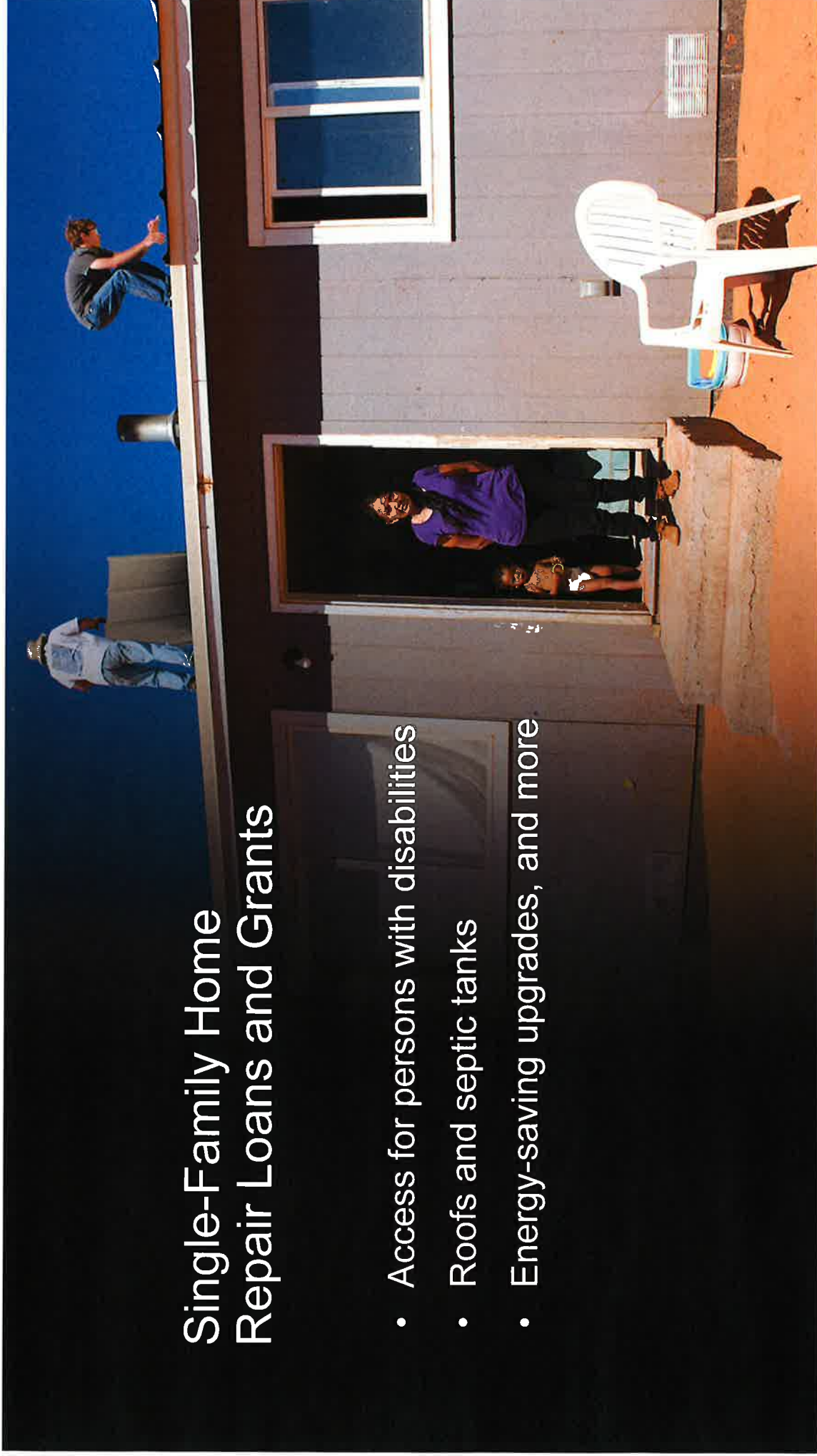


## Single-Family Housing

- No Down Payment
- 100 Percent Affordable Fixed Rate Financing
- Closing Costs and Repairs may be included
- No Prepayment Penalties

## Single-Family Home Repair Loans and Grants

- Access for persons with disabilities
- Roofs and septic tanks
- Energy-saving upgrades, and more



# Multi-Family Housing Footprint in Idaho

- 156 Apartment Complexes
- 85 Family Apartment Complexes
- 65 Elderly Apartment Complexes
- 6 Off Farm Labor Housing Complexes
- 3,887 Units
- Housing: 6581 Individuals
- 3,495 Very Low-Income Household
- 234 Low Income Households







## Community Facilities

- Hospitals, health clinics
- Schools
- Daycares
- Fire houses, first responder vehicles and equipment
- Community centers and more.

# Business Programs

- Agriculture Innovation Center Program
- BioPreferred Program
- Business and Industry Loan Guarantees (B&I)
- Energy Programs
- Food Supply Chain Guaranteed Loan Program
- Intermediary Relending Program (IRP)
- Rural Business Development Grants (RBDG)
- Rural Business Investment Program (RBIP)
- Rural Cooperative Development Grants (RCDG)
- Rural Economic Development Loan and Grant (REDLG)
- Rural Innovation Stronger Economy (RISE) Grants
- Rural Microentrepreneur Assistance Program (RMAP)
- Socially-Disadvantaged Group Grants (SDGG)
- Value Added Producer Grants (VAPG)



## Business & Industry Loan Guarantees

- Convert, enlarge, repair, modernize, or develop business
- Purchase and develop land, easements, rights-of-way, buildings, or facilities
- Purchase equipment, machinery, supplies, or inventory
- Refinance when new jobs will be created and other conditions are met



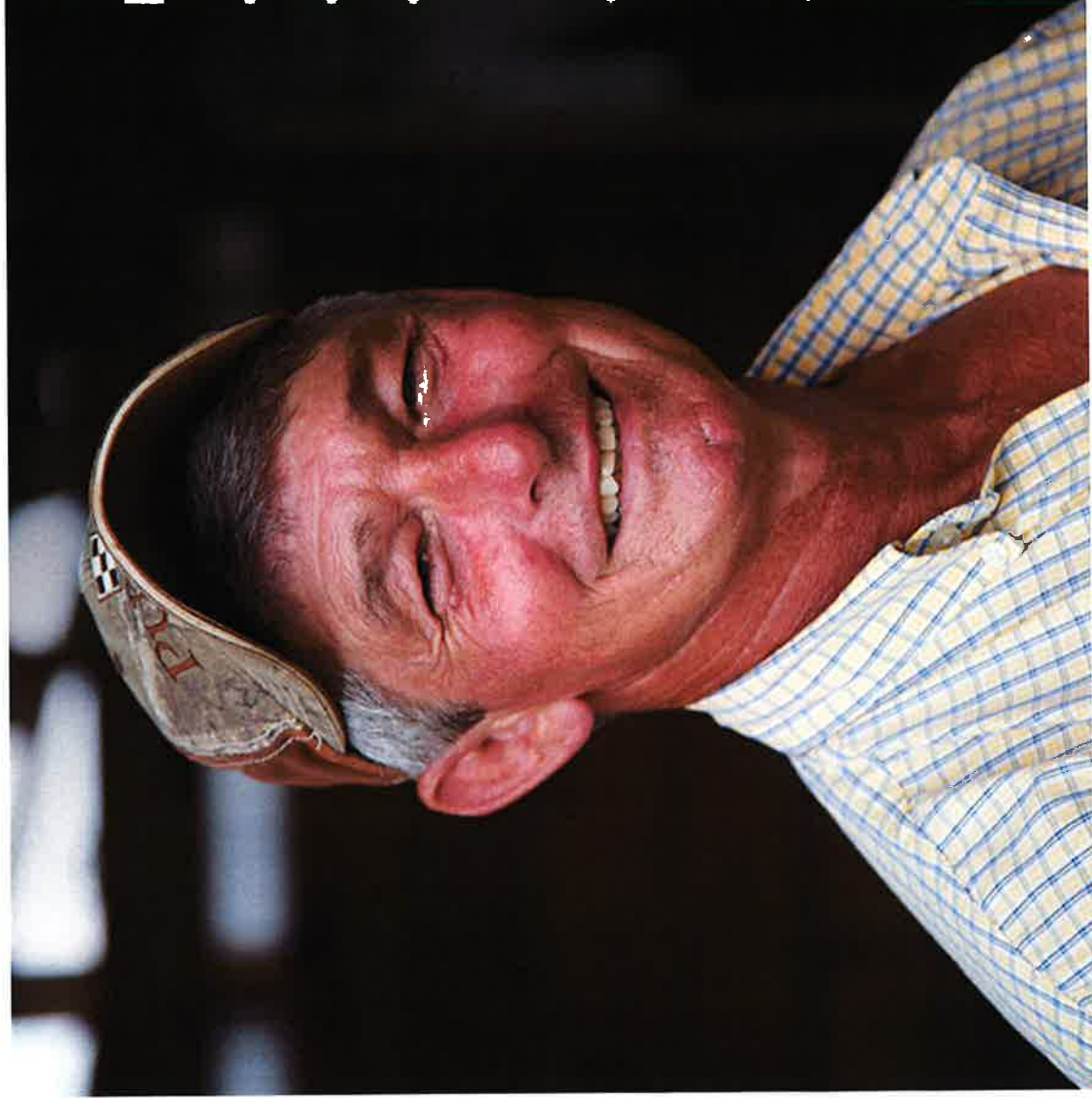
## Energy Programs

- Advanced Biofuel Payment Program
- Biorefinery, Renewable Chemical, and Biobased Product Manufacturing Assistance Program
- Repowering Assistance Program
- Rural Energy for America Program (REAP)
- Energy Audits & Renewable Energy Development Grants
- Renewable Energy Systems & Energy Efficiency Improvement Loans & Grants





## Cooperative Programs



## REAP

- Install energy efficient lighting
- Upgrade refrigeration systems
- Improve insulation, duct work, windows, and other building upgrades
- Lower heating and cooling costs with heating, ventilation, and air conditioning upgrades
- Install solar panels or wind turbines
- Purchase anaerobic digesters



## Water and Waste Disposal Loans and Grants

- Improve infrastructure
- Support public health and safety or
- Promote economic development.

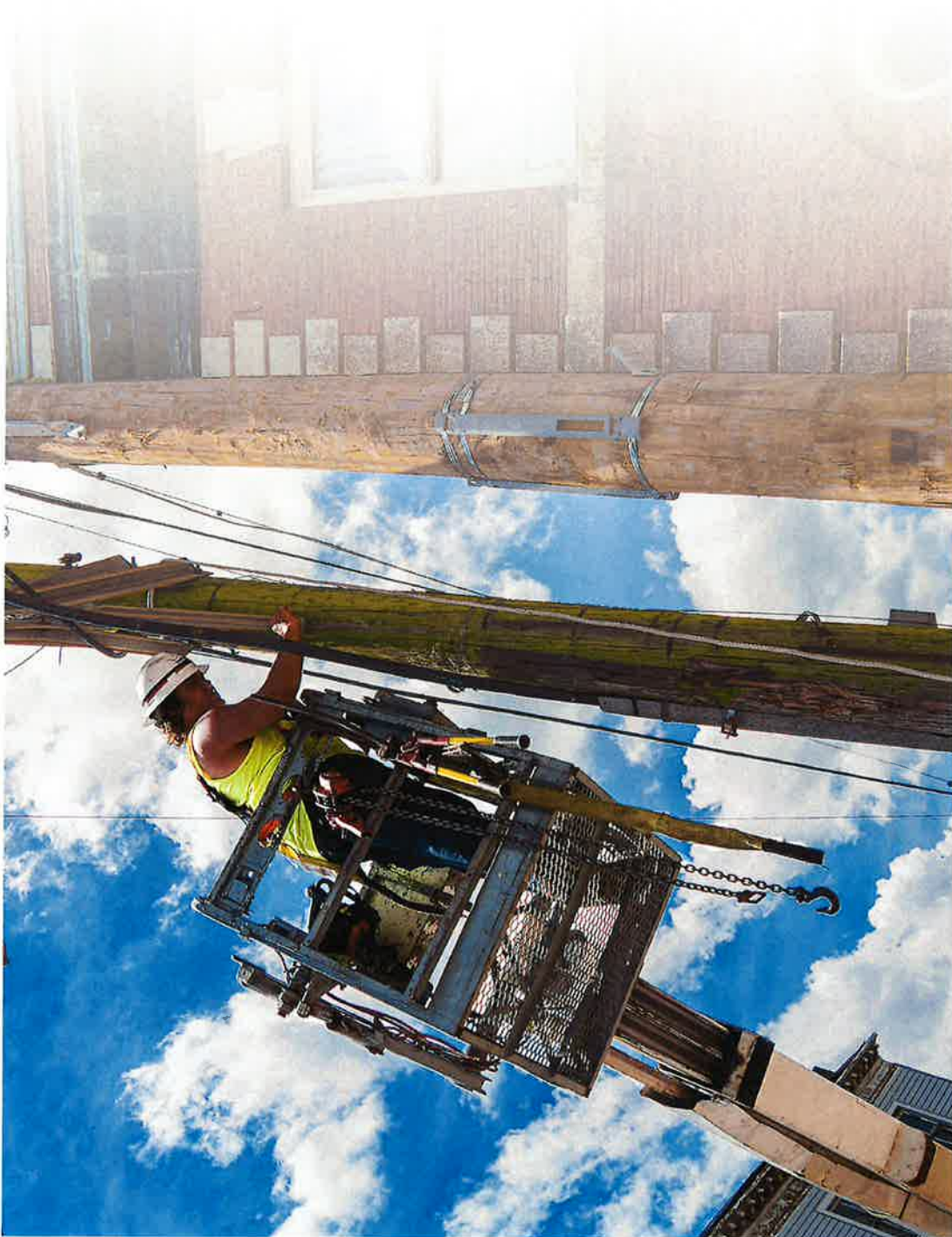
## Telecommunications Program

- Community Connect Grants
- Distance Learning and Telemedicine Grants
- ReConnect Program
- Rural Broadband Access Loan and Loan Guarantees
- Telecommunications Infrastructure Loans and Guarantees





# Electric Program & Rural Utilities Service



## Contact Information

Assistance under USDA Rural Development programs is available to applicants in areas designated as “rural.” Under law, the definition of “rural area” is different for each program.

Contact your local USDA Rural Development office for more information.

Rudy Soto  
Idaho State Director  
[rudy.soto@usda.gov](mailto:rudy.soto@usda.gov)

Or go to: [www.rd.usda.gov/id](http://www.rd.usda.gov/id)

Or call 1 (800) 632-5991 (toll free)

USDA is an equal opportunity provider, employer, and lender.



USDA is an equal opportunity provider, employer, and lender.

