



Scholarships and Grants

Base Review

Keith Bybee
Manager, Budget & Policy Analysis

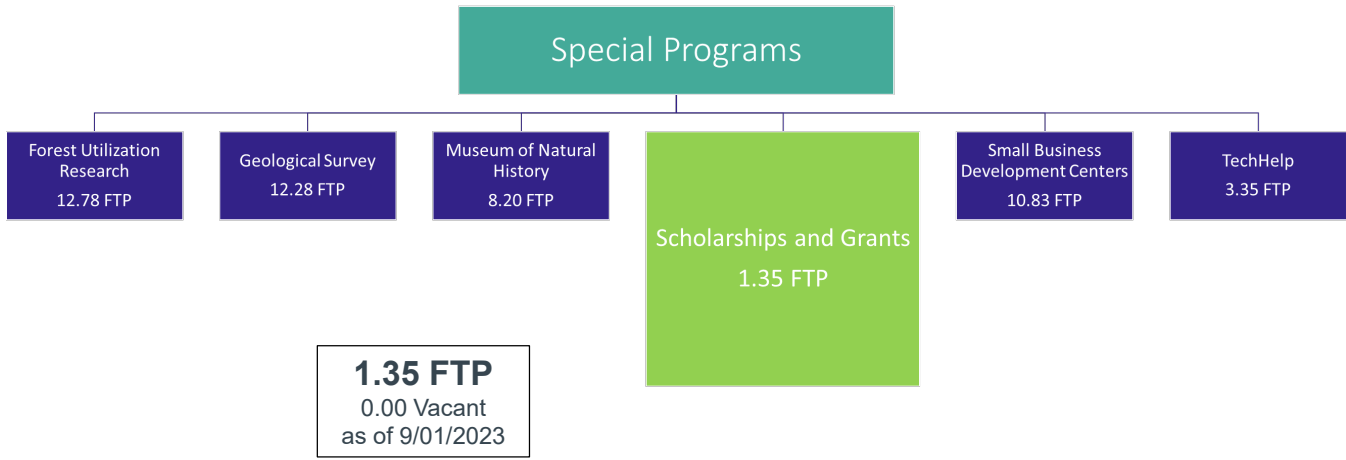
January 25, 2024

Scholarships and Grants

The Office of the State Board of Education administers four scholarship and grant programs:

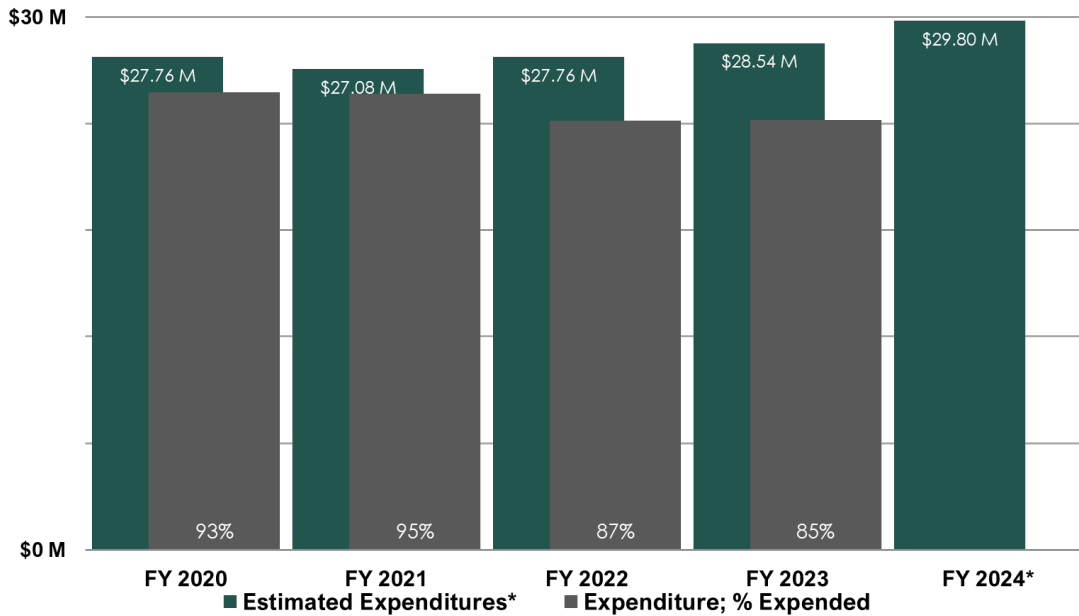
- (1) Idaho Work Study Program [Statutory Authority: Section 33-4401, Idaho Code, et seq.];
- (2) Armed Forces and Public Safety Officer Scholarship (fee waiver) [Statutory Authority: Section 33-4302, Idaho Code];
- (3) Opportunity Scholarship [Statutory Authority: Section 33-4303, Idaho Code, et seq.]; and
- (4) Gaining Early Awareness and Readiness Undergraduate Program (GEARUP) federal scholarships.

Organizational Structure

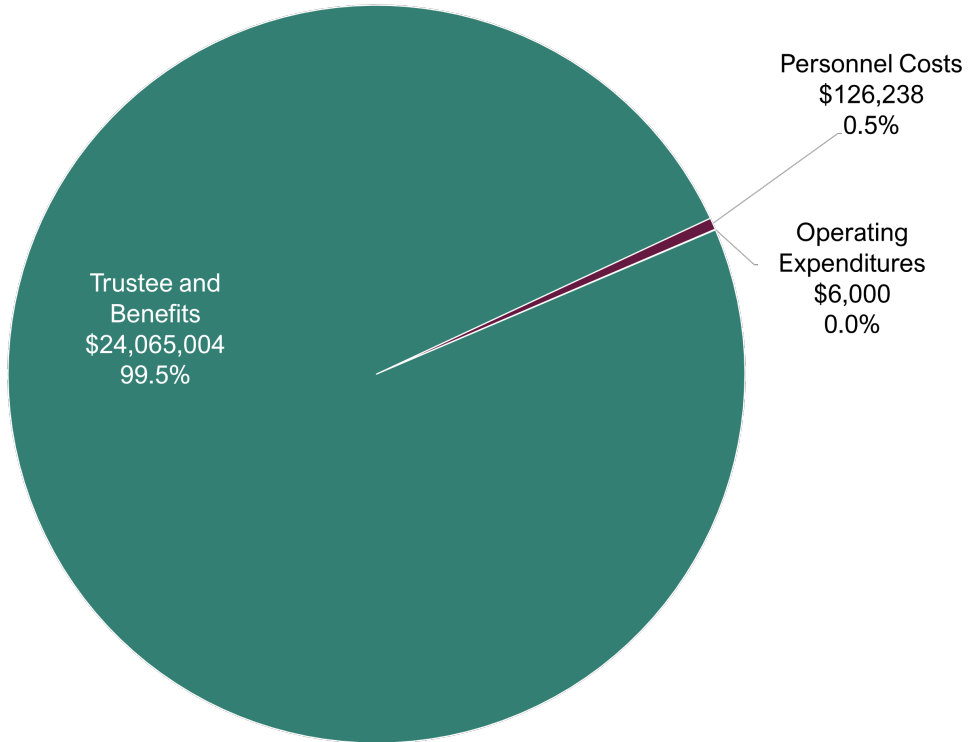


Five-Year Appropriations and Expenditures

Estimated Expenditures and Actual Expenditures



FY 2023 Expenditures



Five-Year Base Snapshot

| Fiscal Year | FY 2020 | FY 2021 | FY 2022 | FY 2023 | FY 2024* |
|---|-------------------|-------------------|-------------------|-------------------|--------------------|
| 1. Total FTP | 1.35 | 1.35 | 1.35 | 1.35 | 1.35 |
| 2. Current Year Base | 19,354,900 | 20,756,800 | 27,757,900 | 27,759,800 | 28,541,600 |
| 3. Benefits Costs | (300) | (500) | 300 | 300 | 1,100 |
| 4. CEC | 2,200 | 1,600 | 1,600 | 6,500 | 4,100 |
| 5. Total Ongoing Maintenance Change | 1,900 | 1,100 | 1,900 | 6,800 | 5,200 |
| 6. % Chg from Current Year Base (line 5 / 2) | 0.0% | 0.0% | 0.0% | 0.0% | 0.0% |
| 7. Ongoing Enhancements | 1,400,000 | 7,000,000 | | 775,000 | 1,251,000 |
| 8. Total Ongoing Enhancements Change | 1,400,000 | 7,000,000 | 0 | 775,000 | 1,251,000 |
| 9. % Chg from Current Year Base (line 8 / 2) | 7.2% | 33.7% | 0.0% | 2.8% | 4.4% |
| 10. Next Year Base (line 2 + 5 + 8) | 20,756,800 | 27,757,900 | 27,759,800 | 28,541,600 | 29,797,800* |
| 11. Total Base Change (line 10 - 2) | 1,401,900 | 7,001,100 | 1,900 | 781,800 | 1,256,200 |
| 12. % Chg from Current Year Base (line 11 / 2) | 7.2% | 33.7% | 0.0% | 2.8% | 4.4% |

*Next Year Base not set. Ongoing Original Appropriation used instead.



2023 Budget Enhancements

| Ongoing Enhancement Name | Type | Amount |
|--|-------------|------------------|
| Rural Educator Grants (S1290 Trailer) | Enhancement | \$775,000 |
| Total Ongoing Base Change from Enhancements | | \$775,000 |



2024 Budget Enhancements

| Ongoing Enhancement Name | Type | Amount |
|--|-------------|--------------------|
| Rural Educator Incentive | Enhancement | \$1,250,400 |
| DHR Consolidation | Enhancement | \$600 |
| Total Ongoing Base Change from Enhancements | | \$1,251,000 |



2025 Budget Request (Supplementals & Enhancements)

| Ongoing Enhancement Name | Type | Amount |
|--|-------------|------------------|
| Rural Educator Incentive Program Funding | Enhancement | \$749,600 |
| GEAR UP Program Move to Subfund | Enhancement | \$0 |
| Total Ongoing Base Change from Enhancements | | \$749,600 |



Please feel free to contact me with any questions at (208) 334-4739 or kbybee@lso.idaho.gov



FY 2023 Expenditures – Personnel Costs

0.5 % of Total Expenditures



| | |
|----------------------------------|----------|
| Employees | \$89,768 |
| Life Insurance | \$649 |
| Group Health Insurance | \$18,906 |
| Workers Compensation | \$178 |
| Employer Retirement Contribution | \$9,942 |
| Social Security and Medicare | \$6,689 |
| DHR | \$106 |

A Total of \$126,238 Was Expended on Personnel Costs



FY 2023 Expenditures – Operating Expenditures

0.0 % of Total Expenditures

| Expenditure | FY 2019 | FY 2020 | FY 2021 | FY 2022 | FY 2023 | % of Total |
|----------------------------|-------------|-----------------|-----------------|--------------|----------------|------------|
| Administrative Supplies | \$26 | | | | | - |
| Professional Services | | \$45,064 | \$52,466 | | \$1,500 | 25.0% |
| Miscellaneous Expenditures | | \$1,409 | | \$140 | | - |
| Computer Supplies | | | | | \$4,500 | 75.0% |
| Total | \$26 | \$46,473 | \$52,466 | \$140 | \$6,000 | - |



FY 2023 Expenditures – Trustee & Benefit Payments

99.5% of Total Expenditures

| Expenditure | FY 2019 | FY 2020 | FY 2021 | FY 2022 | FY 2023 | % of Total |
|---------------------------------|--------------|--------------|--------------|--------------|--------------|------------|
| Education & Training Assistance | \$15,827,323 | \$22,672,184 | \$22,159,646 | \$21,962,769 | \$22,991,741 | 95.5% |
| Federal Payments To Subgrantees | \$2,679,543 | \$2,949,919 | \$3,349,612 | \$2,106,517 | \$1,073,264 | 4.5% |
| Total | \$18,506,866 | \$25,622,103 | \$25,509,258 | \$24,069,286 | \$24,065,004 | - |



2020 Budget Enhancements

| Ongoing Enhancement Name | Type | Amount |
|--|-------------|--------------------|
| SG, GEARUP Scholarships | Enhancement | \$1,400,000 |
| Total Ongoing Base Change from Enhancements | | \$1,400,000 |

| Onetime Enhancement Name | Type | Amount |
|--|-------------|--------------------|
| Opportunity Scholarships | Enhancement | \$7,000,000 |
| Total Onetime Base Change from Enhancements | | \$7,000,000 |



2021 Budget Enhancements

| Ongoing Enhancement Name | Type | Amount |
|--|-------------|--------------------|
| Opportunity Scholarship | Enhancement | \$7,000,000 |
| Total Ongoing Base Change from Enhancements | | \$7,000,000 |



2022 Budget Enhancements

No Ongoing Enhancements



Agency Funds – Sources and Uses

Federal Grant

The GEAR UP Program is a discretionary grant program that focuses on early intervention strategies to assist students in becoming prepared for post-secondary education. The program helps eligible low-income students meet standards necessary for high school graduation and provide them with the skills necessary to succeed beyond high school. Students who participate in the early intervention component of GEAR UP (through the Idaho Department of Education) are eligible for scholarships through the State Board of Education.

Uses:

Provides financial aid grants to post-secondary students. Scholarship recipients must demonstrate financial need and be enrolled full-time at an eligible institution of higher education within Idaho's boundaries (including all public institutions, College of Idaho, Northwest Nazarene University, and BYU Idaho).



Agency Funds – Sources and Uses

Miscellaneous

Moneys in this fund come from a variety of sources including donations received from individuals, organizations, and foundations.

Uses:

Provides financial aid grants to post-secondary students. Scholarship recipients must demonstrate financial need and be enrolled full-time at an eligible institution of higher education within Idaho's boundaries (including all public institutions, College of Idaho, Northwest Nazarene University, and BYU Idaho).

