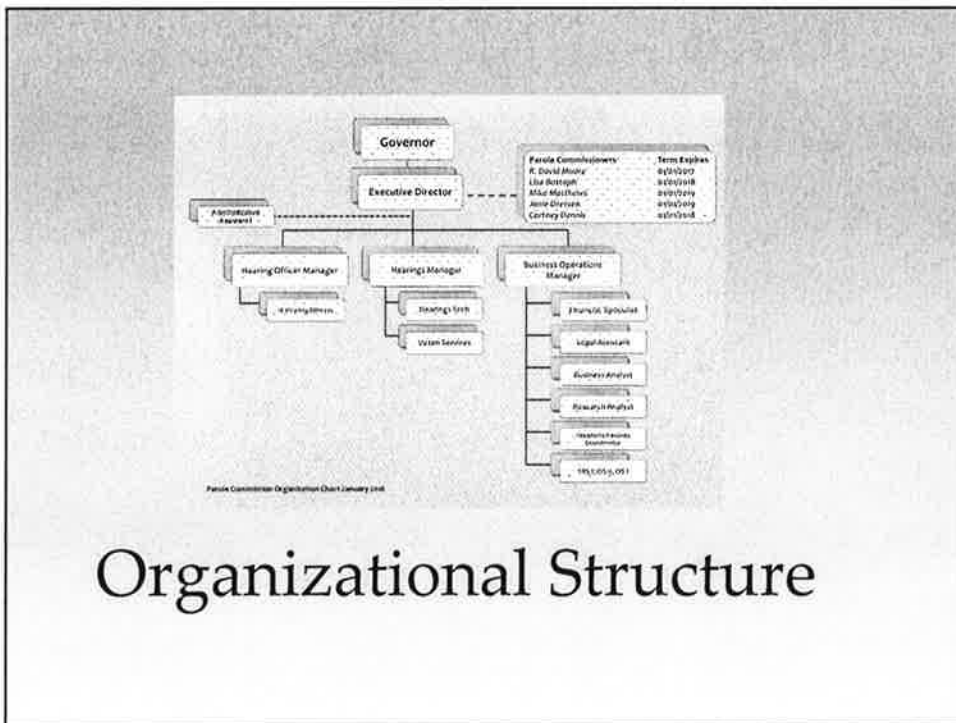


# Idaho Commission of Pardons and Parole

{ Sandy Jones, Executive Director



## Organizational Structure

- Five Part-Time Commissioners
- Meet monthly for approximately two weeks
  - 25 hearings per day face to face
    - Regular parole and revocations
    - Boise and Pocatello facilities
    - Video to Orofino from Pocatello
- Two staff members support each hearing
  - Take minutes, audio recording, data collection
  
- 80 to 100 administrative reviews per month  
Executive session only

## Commission workload

- ⌘ Typical sentence includes fixed and indeterminate portions (Unified Sentencing Act)
  
- ⌘ Individuals are not eligible to be considered for parole until the fixed portion is served
  - ⌘ Exception is medical parole
  
- ⌘ Parole in Idaho is at the discretion of the Commission

## Parole 101

- ⌘ Hearing officers interview each parole eligible individual early in the process
- ⌘ Comprehensive report, including a parole guideline score, is provided for Commissioners
- ⌘ Commissioners make initial parole decisions approximately 6 months prior to end of fixed portion of the sentence

## Parole 101

- ⌘ Commissions consider several factors for each case, plus case specific factors
  - ⌘ Criminal History
  - ⌘ Nature of the crime
  - ⌘ Risk Assessments
  - ⌘ Institutional Behavior
  - ⌘ Institutional Programming
  - ⌘ Victim/prosecutor input, if available

## Parole 101

- & If granted, release will be set by Commissioners, including supervision conditions
- & If denied, reason will be provided in the official record
  - ⌘ New hearing set or Full Term Release
- & Informal appeal process can be requested

## Parole 101

- & Commissioners are also responsible for addressing parole violations
- & Initial hearing by a Hearing Officer
  - ⌘ Must determine whether or not guilty of any violations (more likely than not)
- & If guilty, schedule for revocation with Commissioners

## Parole Revocation

⊗ If Parole is revoked, options are:

- ⊗ Grant a new parole date
- ⊗ Deny a new parole date but set a new hearing
- ⊗ Deny a new parole date and pass to full term

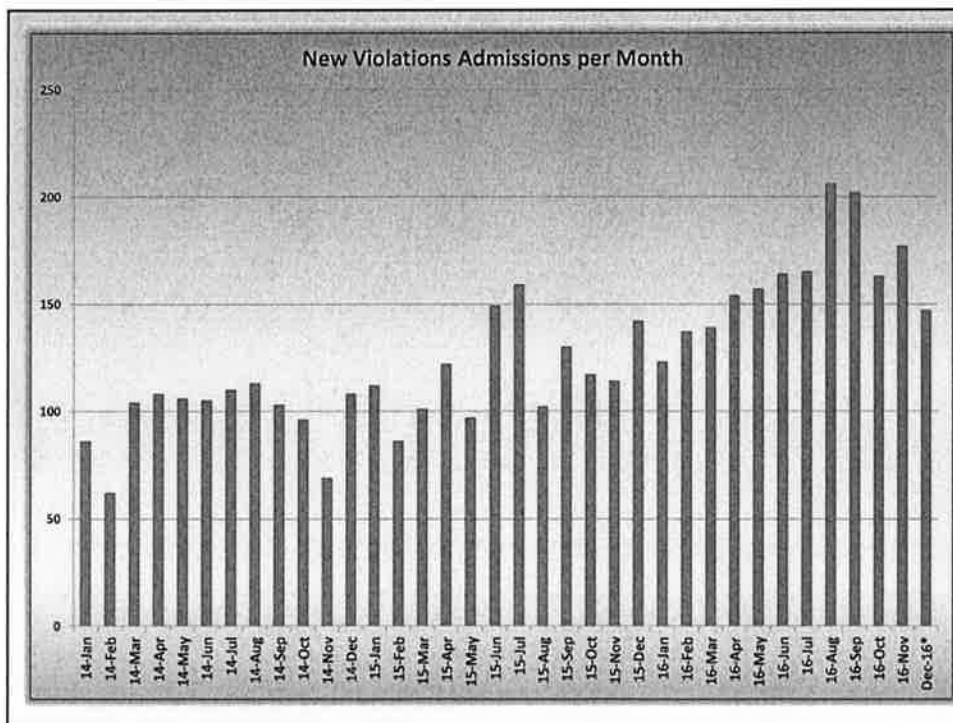
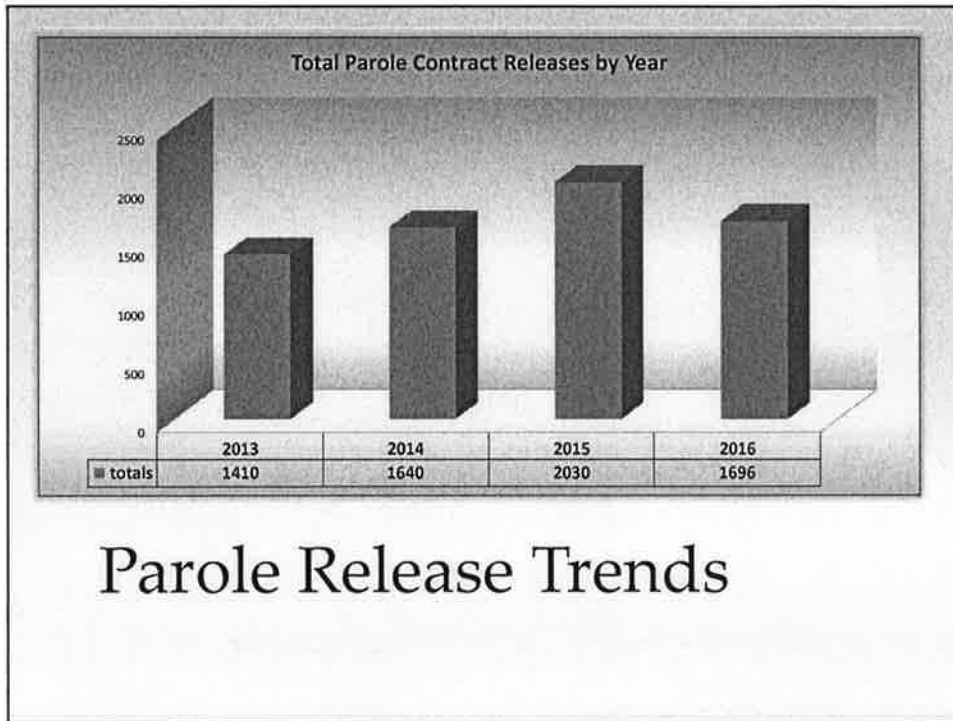
⊗ Informal appeal process can be requested.

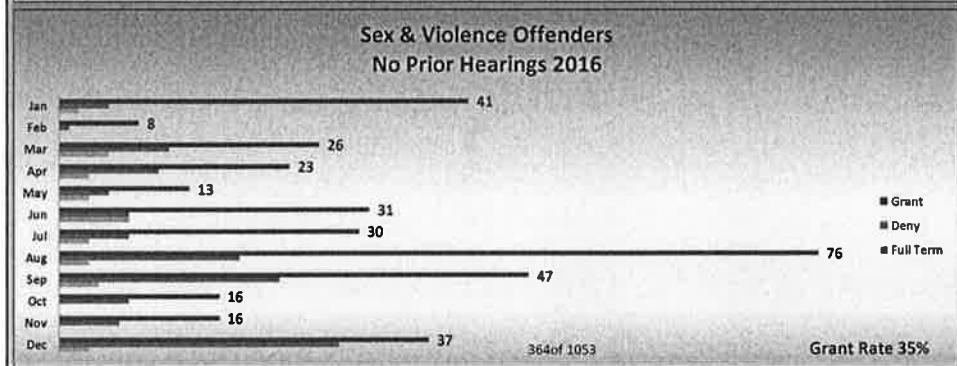
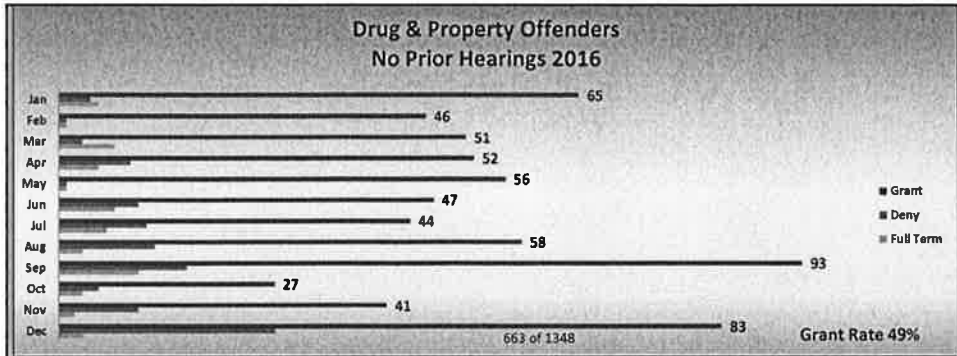
## Parole Revocation

⊗ Commission is Idaho's releasing authority

- ⊗ Parolees are supervised by IDOC Probation and Parole Officers
- ⊗ Once the Court imposes a term sentence, the Judge is no longer involved in the case.

## Basic Parole Facts





Questions?