

Senate Education Committee

Tuesday | February 14, 2017

Emma Atchley, President
Idaho State Board of Education

Board of Education Members



**Emma Atchley,
President**



**Dr. Linda Clark,
Vice President**



**Debbie Critchfield,
Secretary**



Dr. David Hill



Don Soltman



Richard Westenberg



Andrew Scoggin

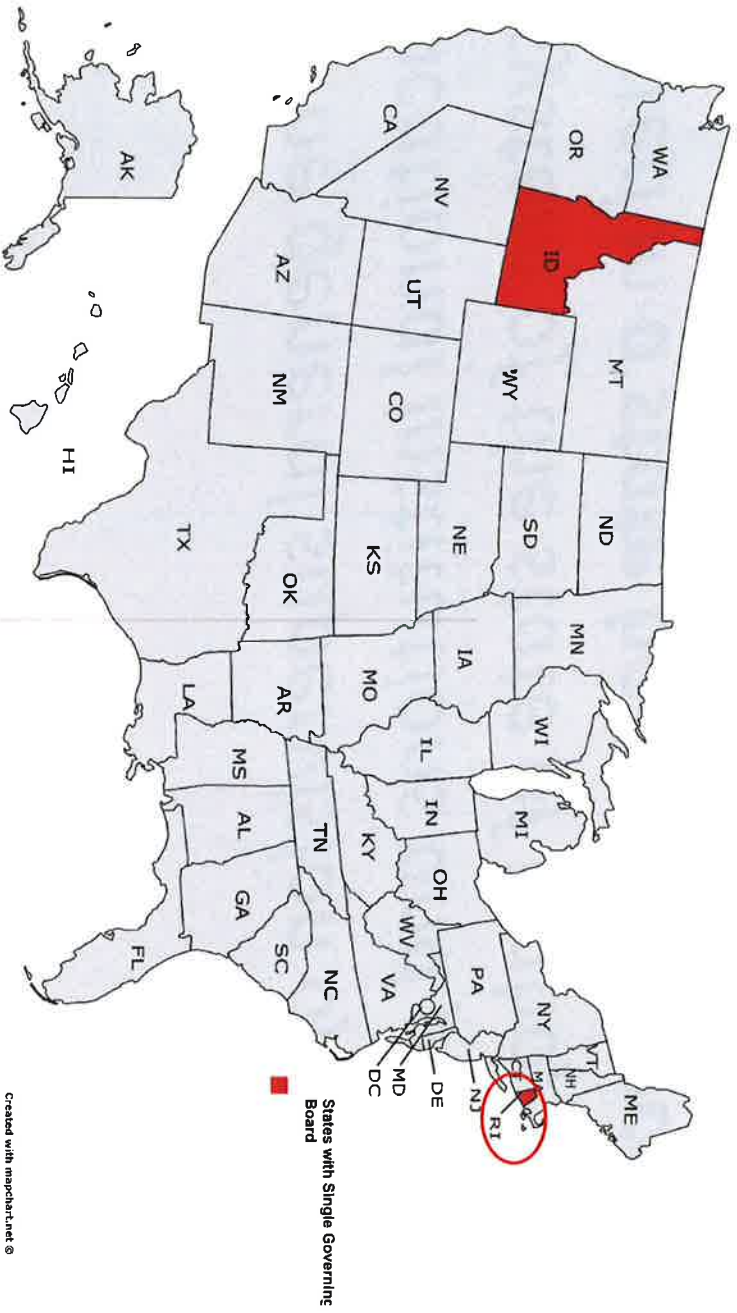


**Sherri Ybarra,
State
Superintendent**

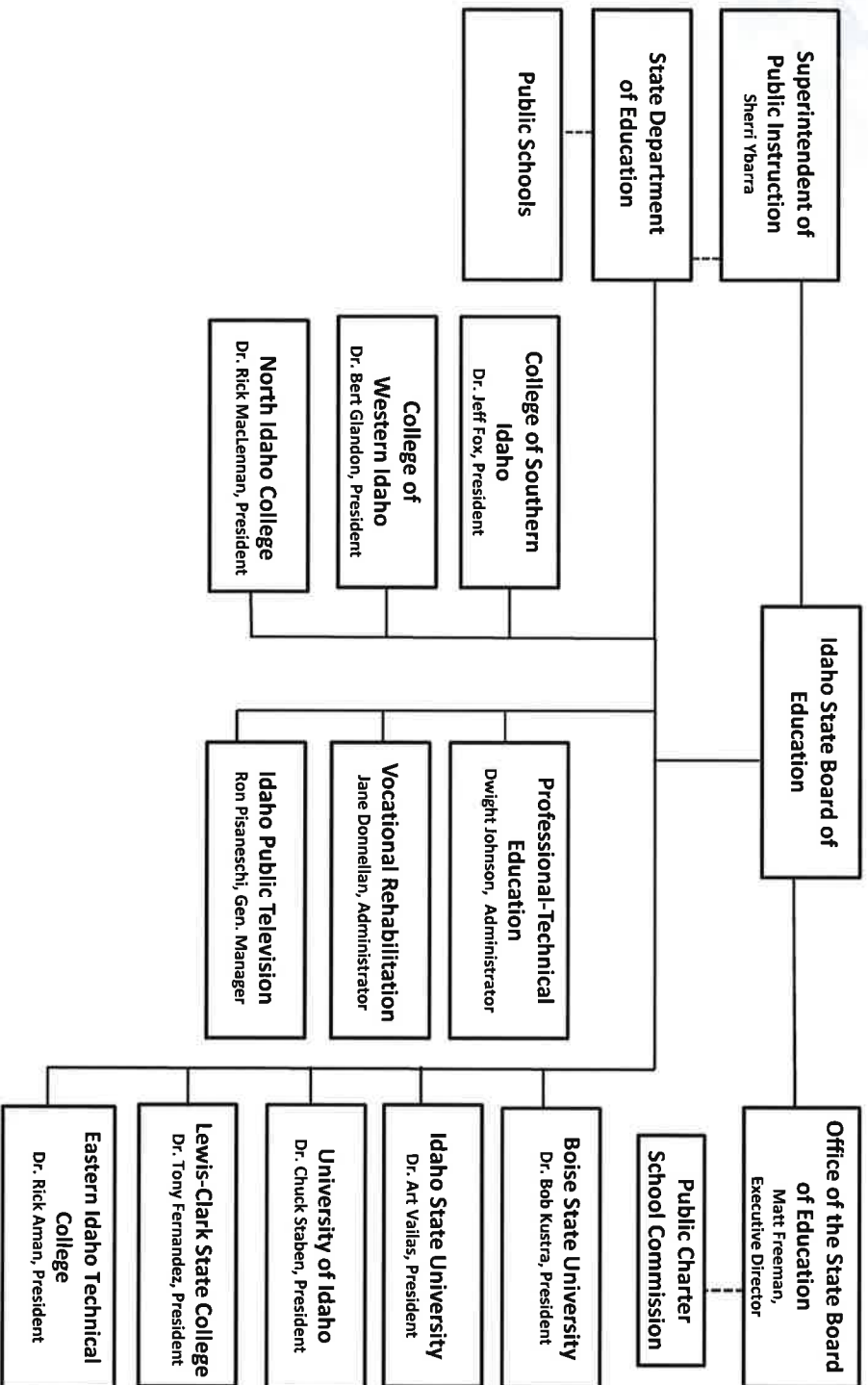
IDAHO CONSTITUTION | Article IX, Section 2

“The general supervision of the state educational institutions and public school system of the state of Idaho, shall be vested in a state board of education...”

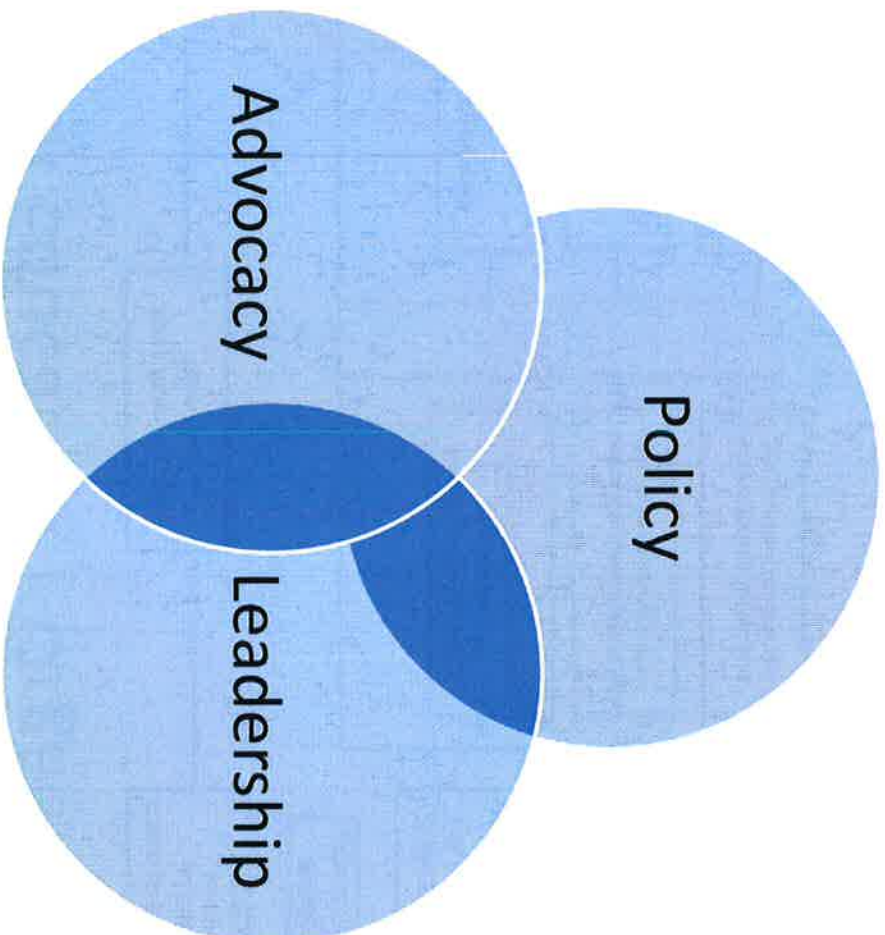
Education Governance



State Board of Education | Organization Chart

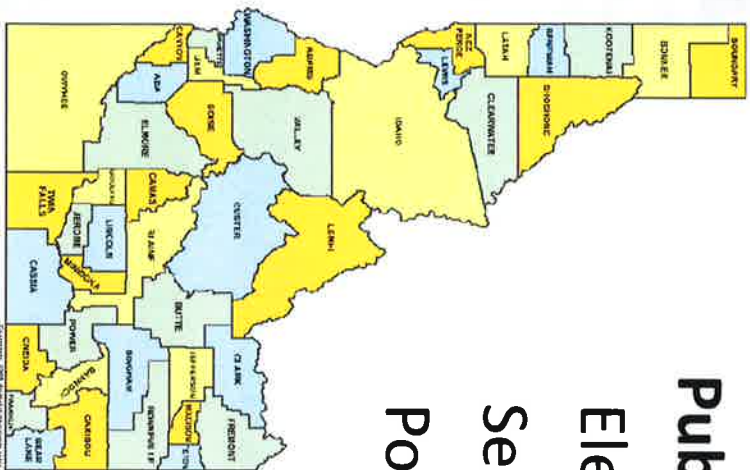


State Board of Education | MISSION



Idaho Public Schools, Colleges and Universities

Fall 2016 Enrollment

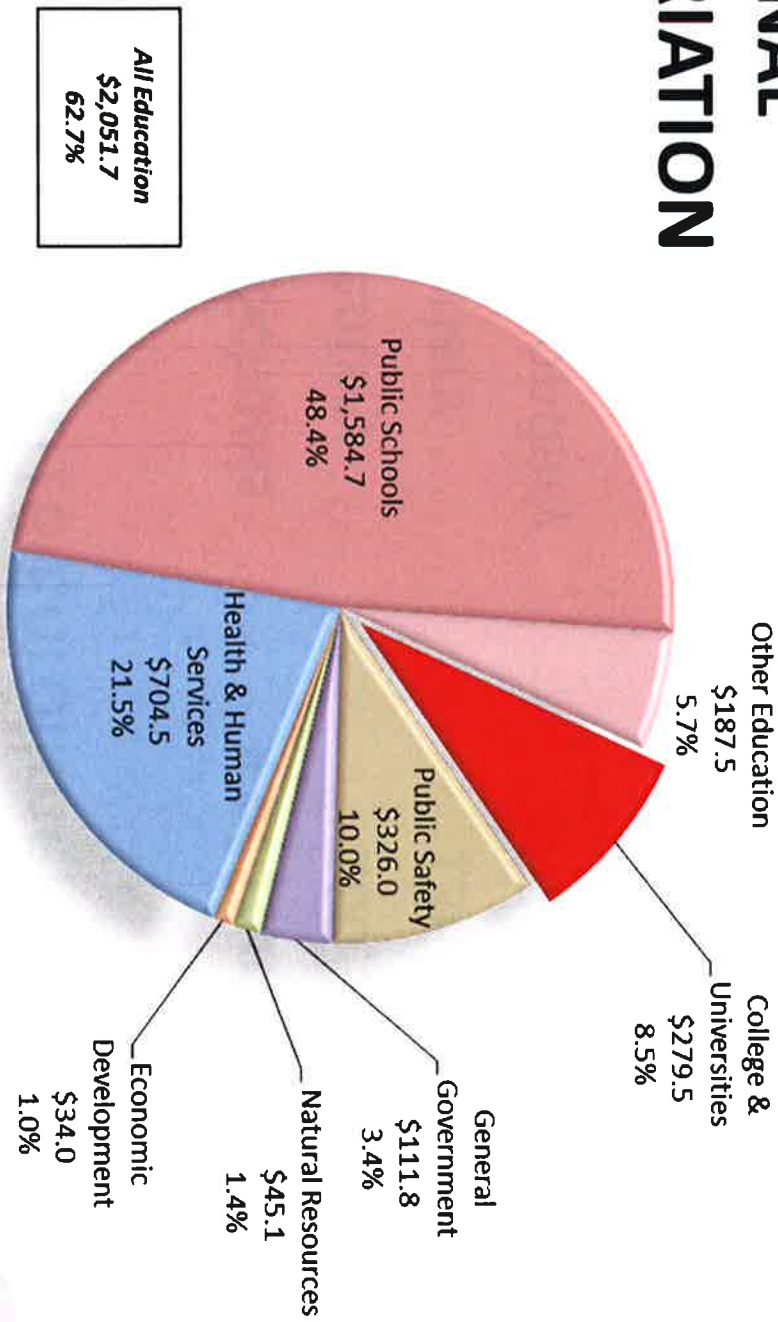


| Public Schools | # of Students |
|----------------|-----------------------|
| Elementary | 160,359* |
| Secondary | 136,759* |
| Postsecondary | 74,666 |
| TOTAL | <u>371,784</u> |

* includes charter school students



FY 2017 ORIGINAL APPROPRIATION



FY 2018 Priorities

- Task Force for Improving Education
- Idaho's Go On rate and strategies for improvement
- Initiatives from the Governor and the Board
- Education as an Economic Imperative

Task Force for Improving Education

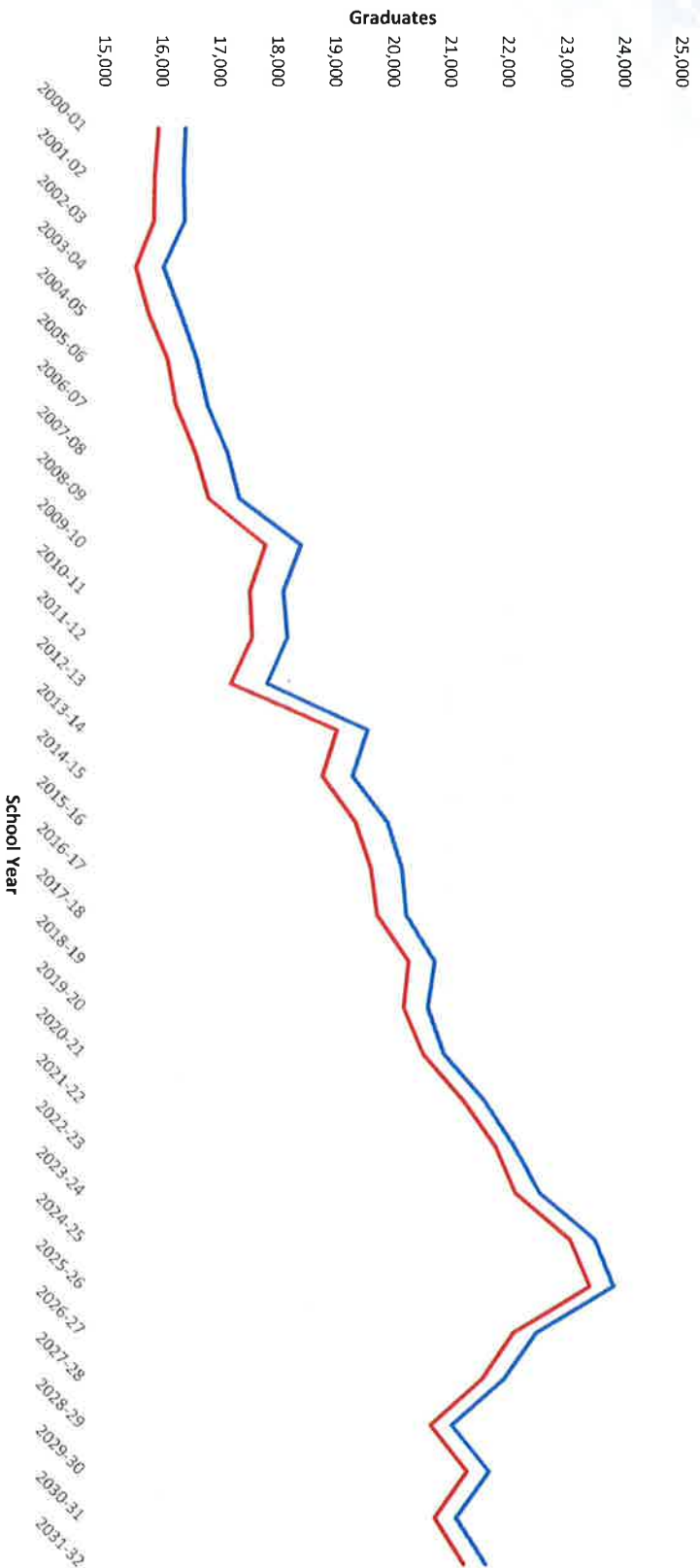


Task Force Initiatives

- Career Ladder = \$62M
- Professional Development = \$6M
- Technology = \$10M
- Advanced Opportunities = \$1M
- College & Career Advising = \$5M



Idaho High School Graduate Projections



Projections begin 2011-12

Public Schools Public & Private

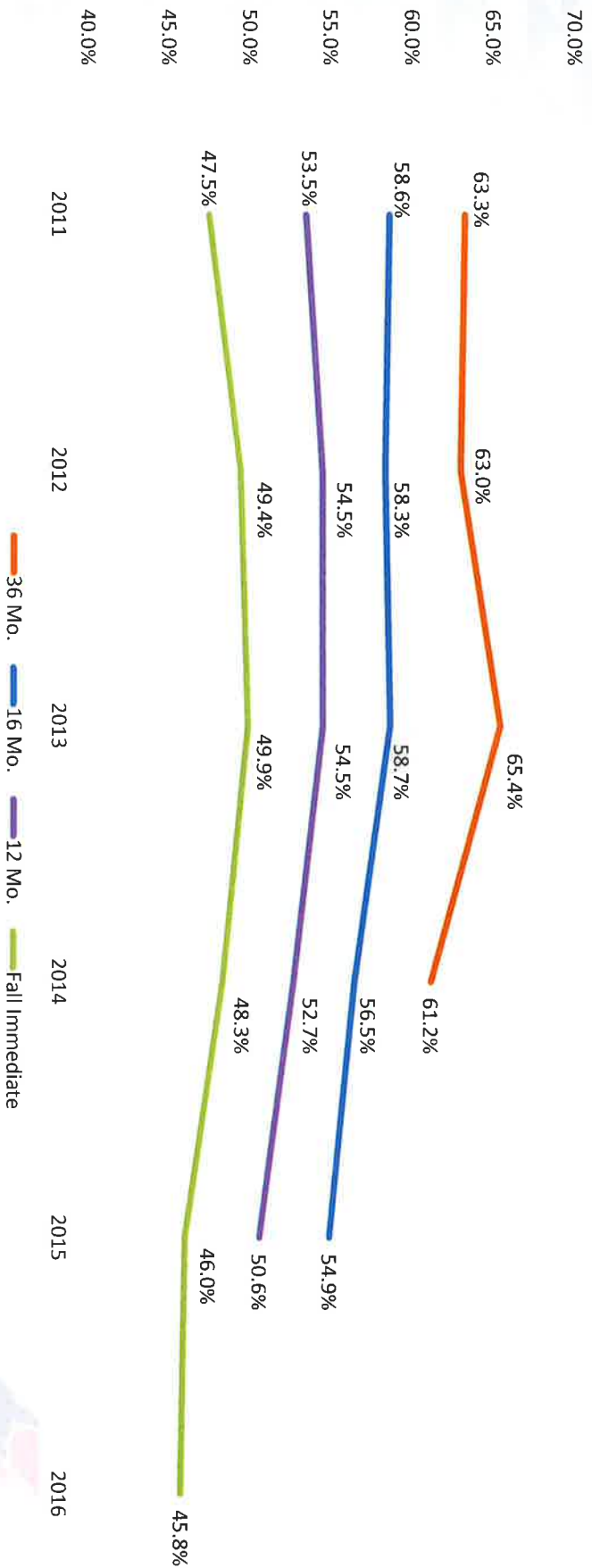
Source: Western Interstate Commission for Higher Education, *Knocking at the College Door: Projections of High School Graduates, 2016*.

Idaho's Go On Rate



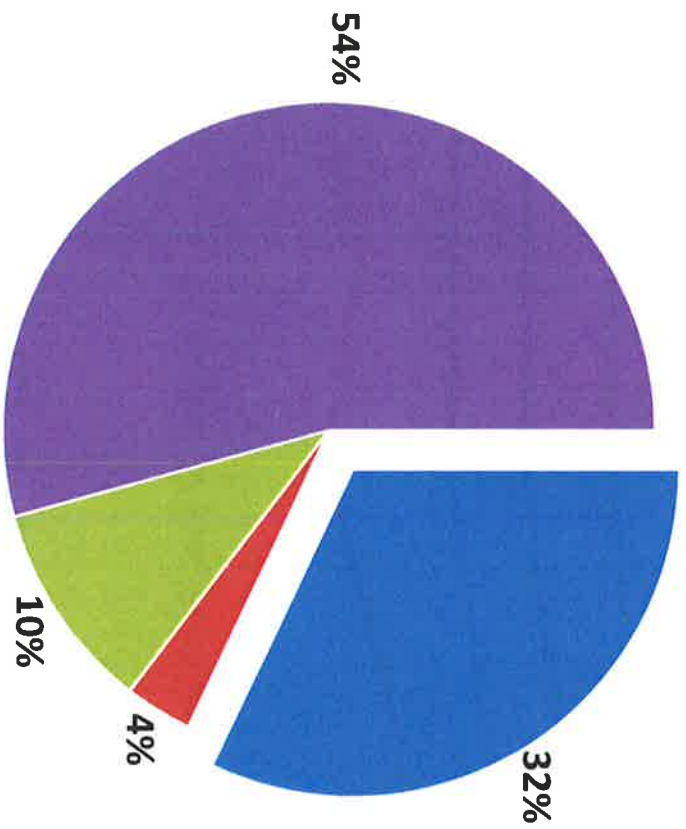
Idaho's Go On Rate

16 Mo., 12 Mo., Fall Immediate



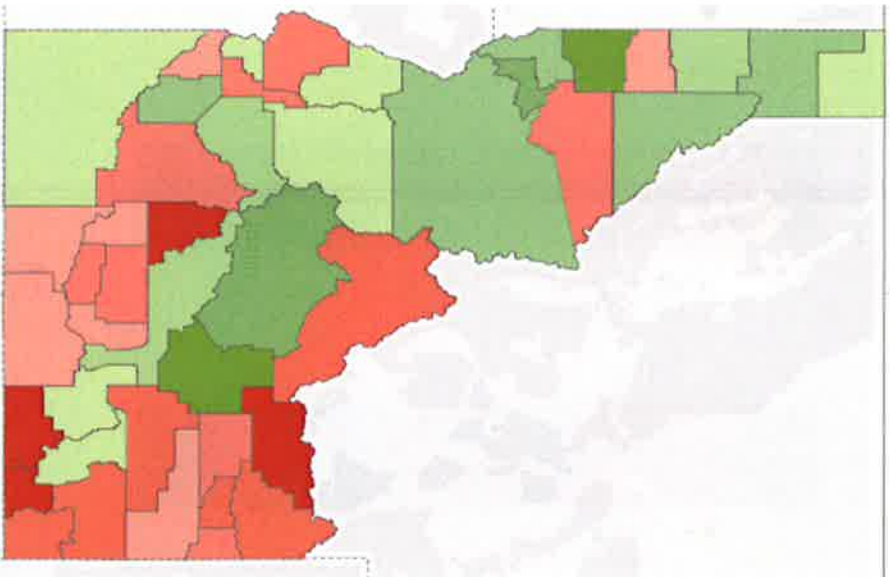
Idaho's Go On Rate

2015-2016 HS Graduating Class
Enrolled Fall Immediate



- In-state Public
- In-state Private
- Out-of-state
- Not Enrolled

High School Go On Rate by County 2015 Cohort Class*

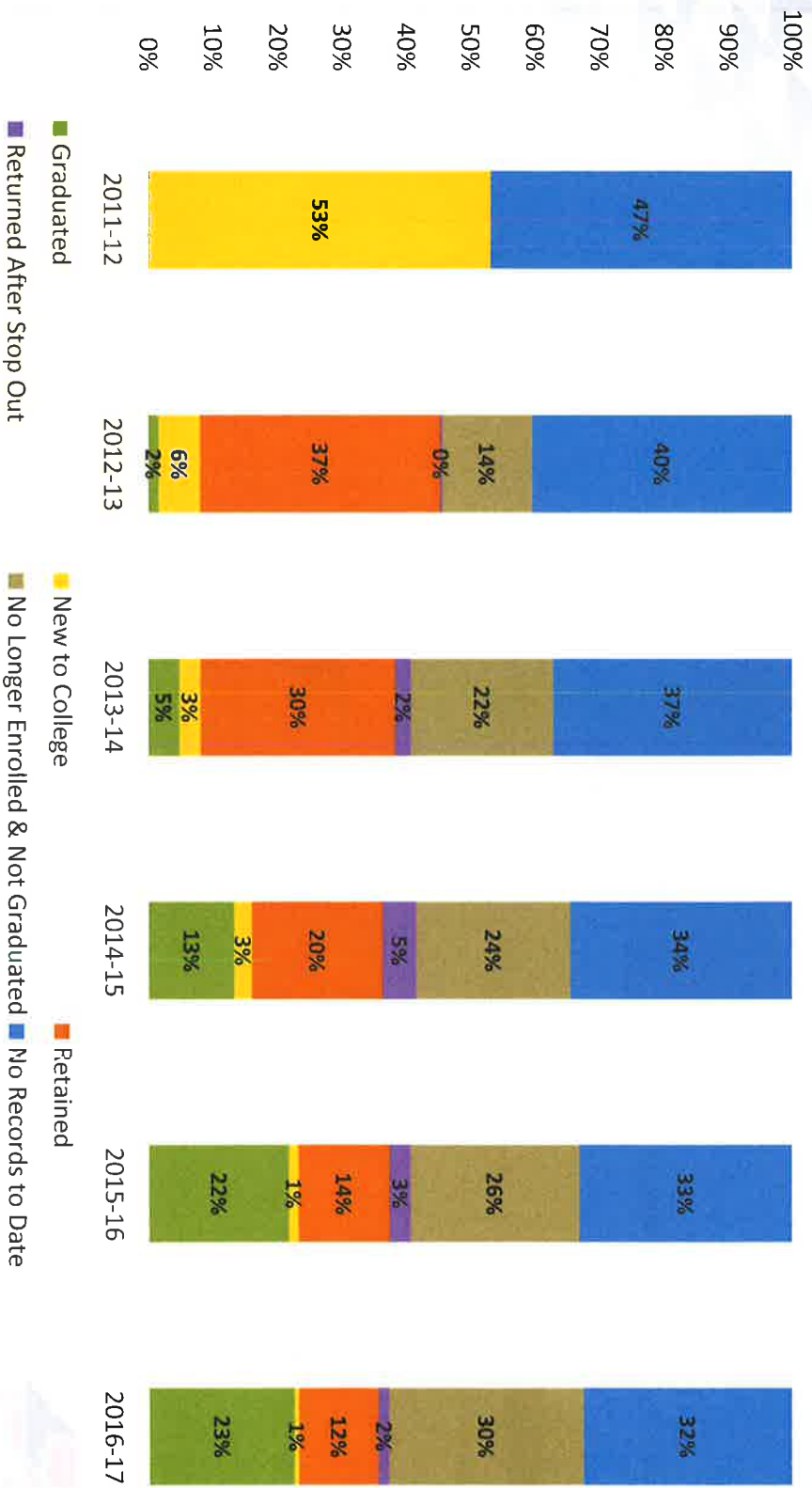


Go On Percentage

15.79 64.71

* Within one year of H.S. graduation

Idaho Postsecondary Progress Report (as of March 2016) | H.S. Class of 2011



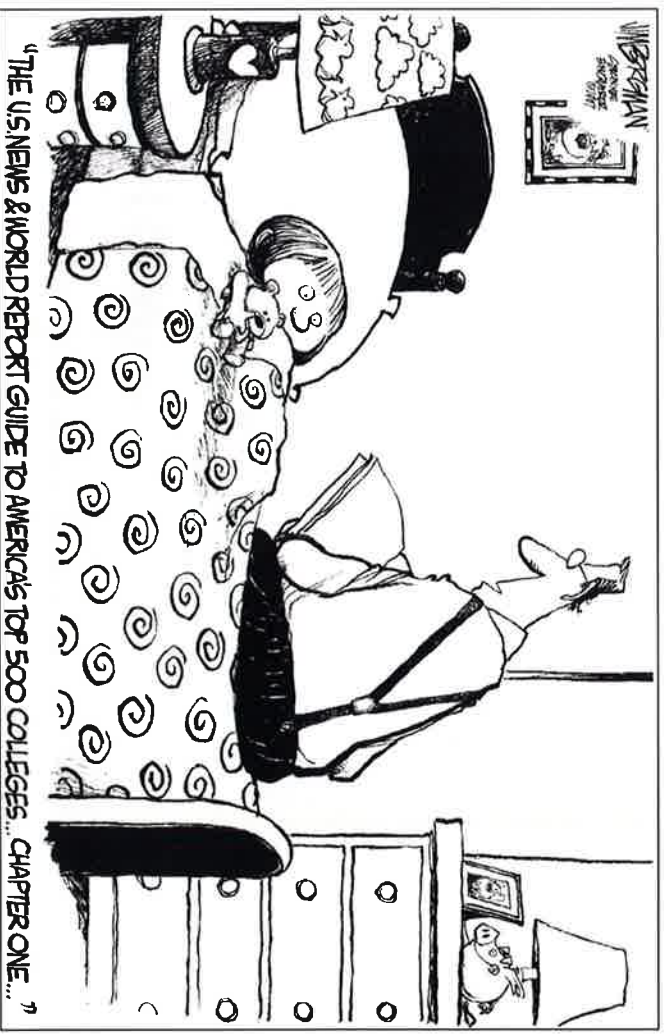
Idaho Ranks 3rd in Postsecondary Enrollment Growth

| STATE | Fall 2014 | | Fall 2015 | | Fall 2016 | |
|---------------|------------|--------------------------|------------|--------------------------|------------|--------------------------|
| | Enrollment | % Change from Prior Year | Enrollment | % Change from Prior Year | Enrollment | % Change from Prior Year |
| New Hampshire | 112,196 | 19.90% | 124,553 | 11.00% | 145,966 | 17.20% |
| Utah | 261,810 | 0.40% | 284,639 | 8.70% | 305,137 | 7.20% |
| IDAHO | 97,393 | -3.00% | 96,886 | -0.50% | 99,283 | 2.50% |
| Georgia | 477,956 | -5.10% | 477,322 | -0.10% | 487,929 | 2.20% |
| Florida | 1,055,129 | -0.10% | 1,009,240 | -4.30% | 1,026,229 | 1.70% |
| Arizona | 418,420 | 5.20% | 430,745 | 2.90% | 436,400 | 1.30% |
| Vermont | 41,127 | -0.60% | 41,040 | -0.20% | 41,571 | 1.30% |

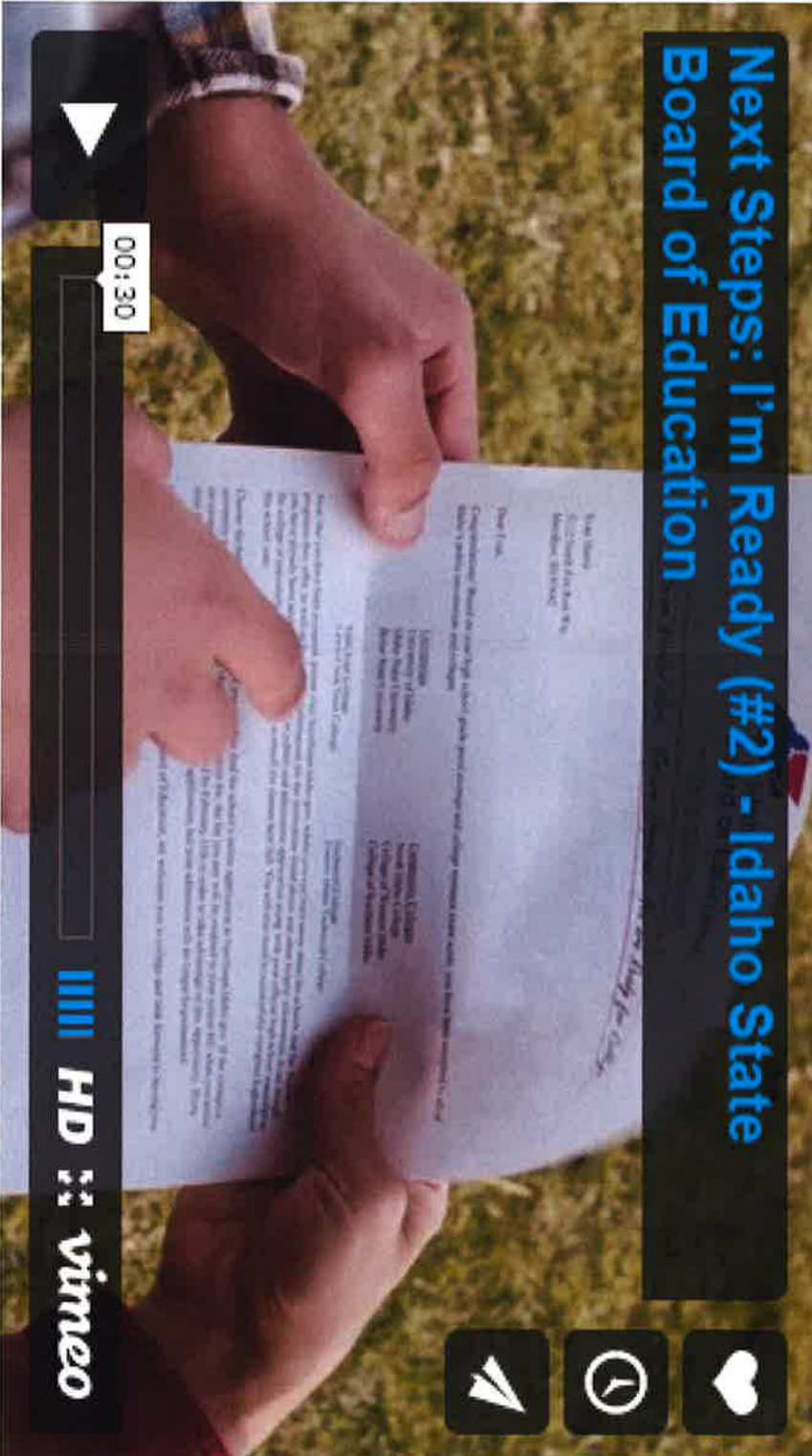
Source: National Student Clearinghouse Research Center, *Current Term Enrollment Estimates*, Fall 2016, <https://nscresearchcenter.org/currenttermenrollmentestimate-fall2016/>

Strategies to Improve Go On Rate

- Streamlining college admission & application processes
- Holding down cost of college
- Increasing state financial aid



Next Steps: I'm Ready (#2) - Idaho State Board of Education





800.755.2666 • 208.325.2666 • 208.325.2667
1000 South State Street • Boise, ID 83725-0001

You've Worked Hard. You're Prepared. You're Ready for College.

Dear [Name],

September 1, 2016

Congratulations! You have been accepted to all of Idaho's public universities and colleges for the fall 2017 semester.



Now that you have been accepted, please visit NextStepsIdaho.gov, where you can learn more about the institutions and degree programs offered, find contact information for the institutions listed above and review other helpful information. Even though you have been accepted, you will still need to submit an admissions application along with your official high school transcript to the college or university of your choice in order to enroll for classes next fall. You will also need to graduate from high school this school year.

You can find the admissions applications for all of Idaho's public colleges and universities online at NextStepsIdaho.gov. If a college or university to which you are applying charges an application fee, the fee you pay will be credited to your tuition bill when you arrive on campus in the fall. You may apply to as many colleges and universities as you would like, but your application fee will only be credited back by the institution you attend. Your application *must* be completed by February 15, 2017, in order to take advantage of this opportunity. If you miss the February 15th deadline, you may still submit an application, but your admission is no longer guaranteed.





<https://vimeo.com/174567878>

Enrollment

| | Fall 2015 | Fall 2016 | % Change |
|--------------|--------------|--------------|-------------|
| LCSC | 301 | 339 | 12.6% |
| UI | 995 | 1,069 | 7.4% |
| BSU | 1,041 | 1,222 | 17.4% |
| ISU | 857 | 868 | 1.3% |
| CSI | 628 | 644 | 2.5% |
| CWI | 727 | 745 | 2.5% |
| NIC | 588 | 566 | -3.7% |
| EITC | 37 | 50 | 35.1% |
| TOTAL | 5,174 | 5,503 | 6.4% |

Initiatives from Governor & Board



October 31 – November 4, 2016

- Participating High Schools: 89 (↑ 51%)
- Participating Seniors: 8,716 (↑ 25%)
- College Applications Submitted: 13,397 (↑ 33%)



NEXT STEPS

THE BOARD OF EDUCATION
IDAHO

For Students

For Families

For Educators

Explore



IDAHO

Ready to connect with college recruiters?

Don't leave tuition money on the table.

Opportunity Scholarship now open.

Whether you've got your sights set on a four-year college, community college, a career technical program, or the military, we're here to help—every step of the way. No matter where you are along the path to graduation, we're here to make sure your next step is a cinch.

Scroll down or jump to your grade:

- 8
- 9
- 10
- 11
- 12

www.nextsteps.idaho.gov

Register

x

Enter your info

First Name

Middle Name (Optional)

Last Name

EDUID

Gender

Date of birth

Month

Day

Year

Email

Password

Confirm password

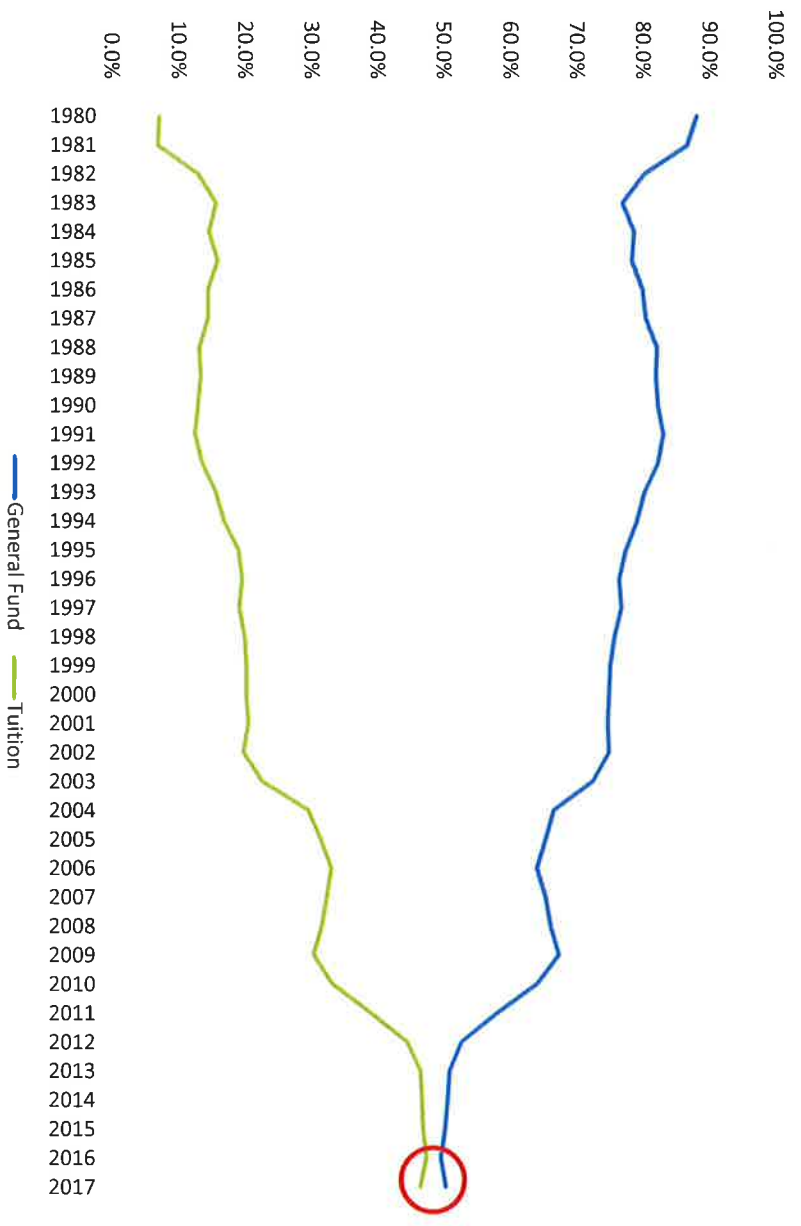
Register

Already started an application?
[Click here to login](#)

- 1+ lower case character
- 1+ capital character
- 1+ number character
- 1+ special character
- 8+ total characters

College & Universities

General Fund & Tuition Appropriation History



2016-17 Tuition & Fees

Lowest tuition & fee increases in almost **30** years

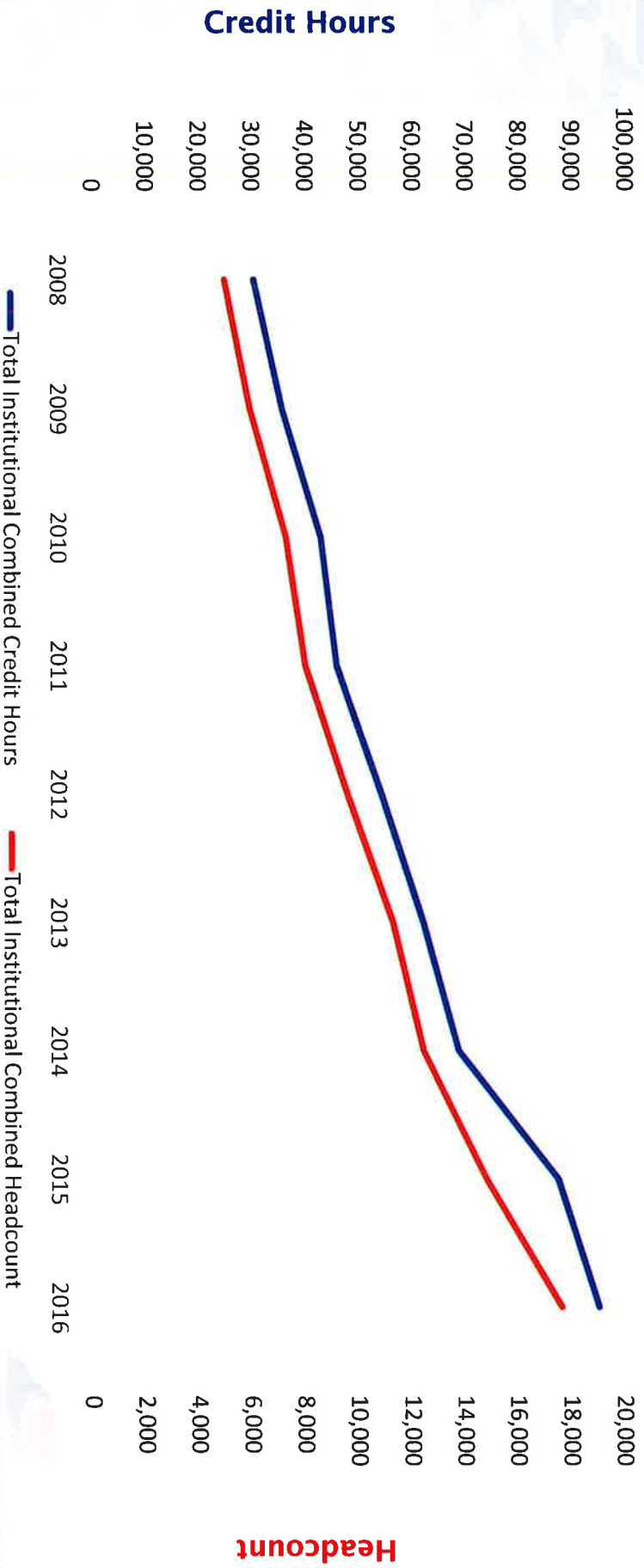
- Boise State University = +3.0%
- Idaho State University = +2.5%
- Lewis-Clark State College = +2.0%
- University of Idaho = +3.0%

Increasing Access & Affordability

- **Advanced Opportunities**
- **New Community College**
- **Adult Degree Completion Scholarship**

Statewide Dual Credit

Annual Credit Hours Taken & Enrollment



Community College Expansion

EASTERN IDAHO
COMMUNITY
COLLEGE

Community College Study Panel Report

July 2016

Performed by: The Research & Business Development Center, Eastern Idaho
Technical College, and the Community College Study Panel



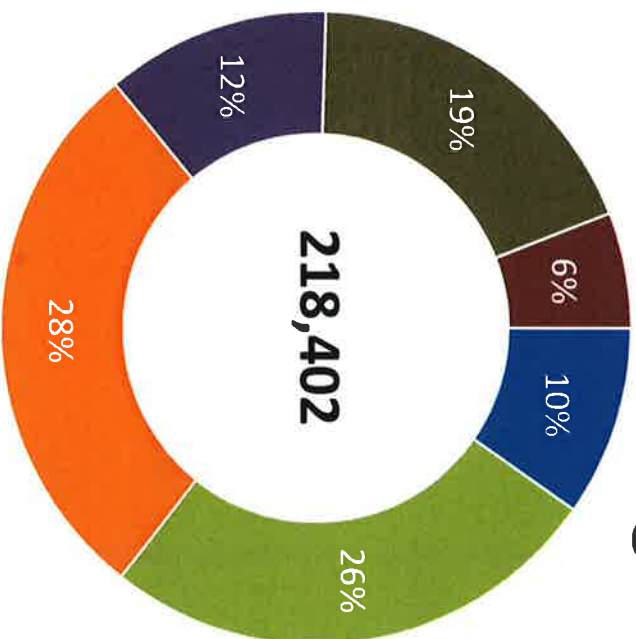
RESEARCH & BUSINESS
DEVELOPMENT CENTER



Adult Postsecondary Completion Scholarship

- ❖ WHO
 - Idaho resident (as defined in law)
 - In pursuit of first higher education degree
 - Minimum of 24 academic or CTE credits already earned
 - Stopped-out from school for three years or more
 - Demonstrated financial need
 - Enrolled at least part-time (i.e. minimum of 6 credits per semester)
- ❖ WHAT
 - Scholarship to incent adult students to complete a first postsecondary certificate or degree
 - Student academic and financial eligibility; amount of the scholarship to be established in rule
- ❖ WHERE
 - For use at any Idaho public or private not-for-profit higher education institution

Levels of Education for Idaho Residents, ages 25-34



- Less than High School
- High School Graduate
- Some College, No Degree
- Associate Degree
- Bachelor's Degree
- Graduate or Professional Degree

Source: American Community Survey, 2015

Higher Education Building Projects

- Boise State University Center for Materials Science building = \$10M
- Idaho State University Gale Life Science building remodel = \$5M (+\$5M from PBF)
- University of Idaho Center for Agriculture, Food and the Environment = \$10M*
- Lewis-Clark State College Career & Technical Education = \$10M*

* Contingent on match from industry and other donations

Higher Education – Research Collaboration

- Joint initiative with Idaho National Laboratory in Idaho Falls to pursue cutting edge research and education
- Expands current collaboration with Idaho’s research universities, benefiting both students and faculty
- Cybercore Integration Center (CIC)
- Collaborative Computing Center (C3)
- SCR 105 to support bonding for construction—all costs covered by lease payments
- After bonds paid off, proceeds go to education system—research collaboration benefits begin immediately

Governor's Task Force for Higher Education

"I have again asked the State Board of Education to lead a new task force to develop a five-year plan for higher education in Idaho Their charge will be to *study the state of higher education in Idaho, initiatives already underway and proven practices*, and to report findings and recommendations on the strategies that best support postsecondary access and completion. The Task Force also will *consider the State's role in funding higher education and recommend how to transition to a State-funding formula for higher education that rewards outcomes toward completion.*"

- Gov. Otter, January 6, 2017

Education as an Economic Imperative

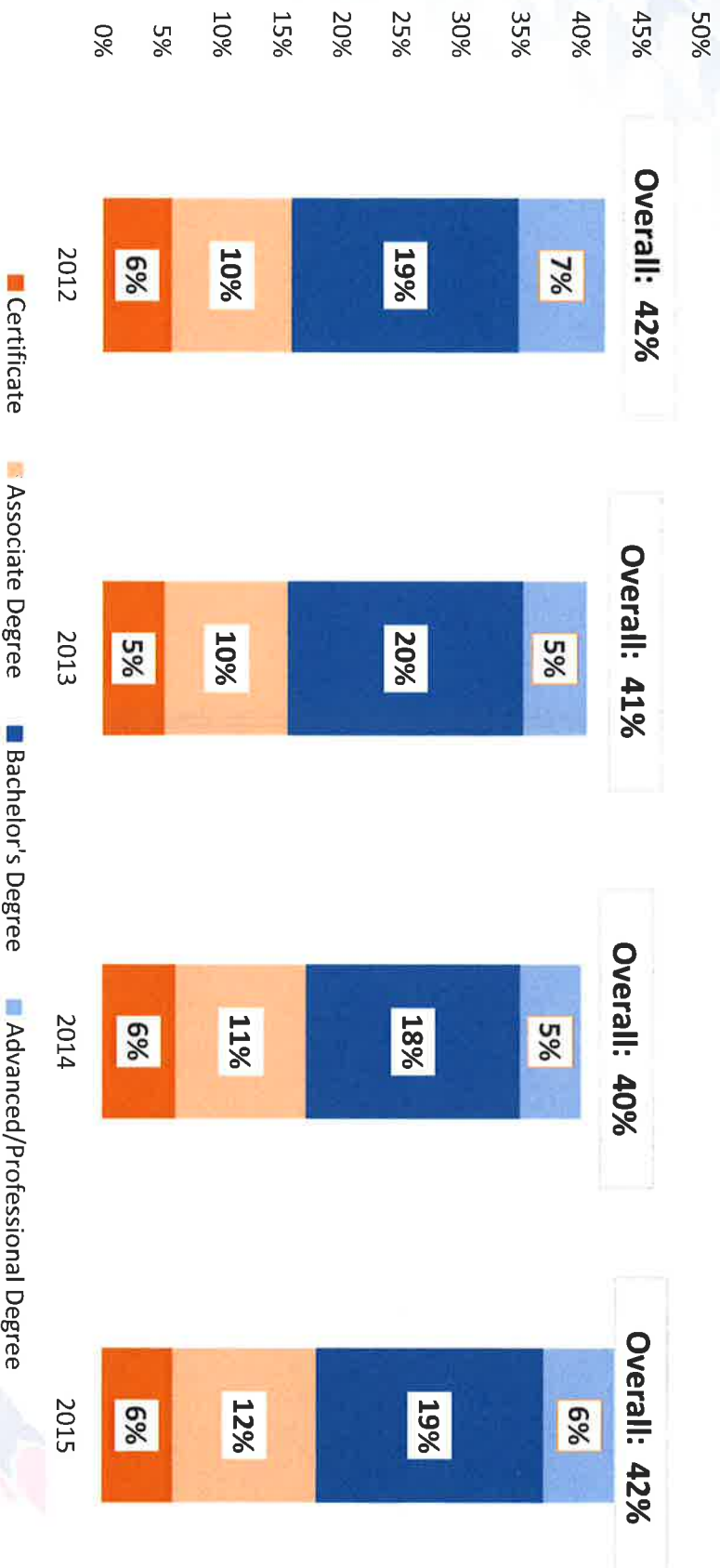


State Board of Education | 60% Goal

60% of Idahoans ages 25 – 34
hold a postsecondary certificate
or degree by the year 2020




60% Goal Progress



Percentage of Idaho residents (ages 25-64) with at least an associate degree, by county

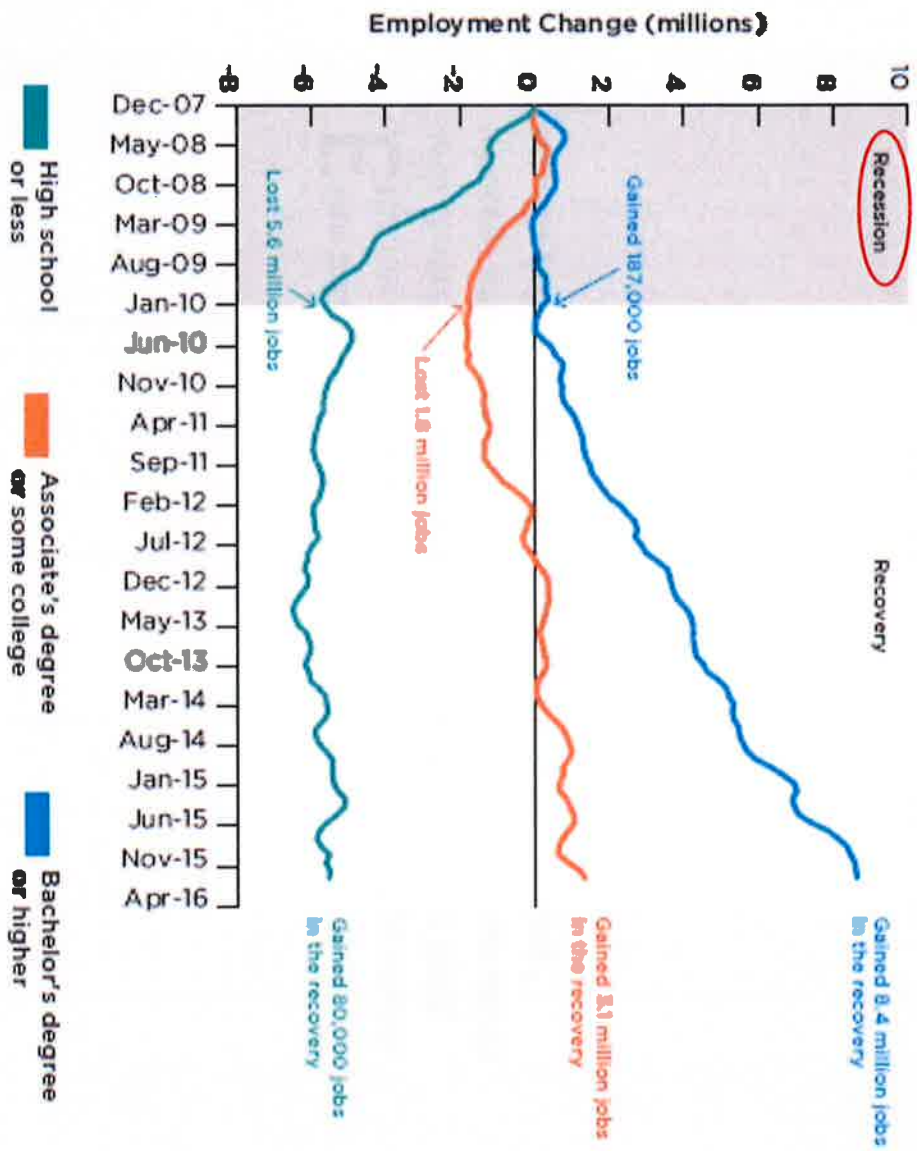
| | | | | | | | |
|----------|-------|------------|-------|-----------|-------|------------|-------|
| Ada | 47.19 | Adams | 30.08 | Bannock | 38.72 | Bear Lake | 25.13 |
| Benewah | 21.78 | Bingham | 27.62 | Blaine | 48.42 | Boise | 36.62 |
| Bonner | 30.47 | Bonneville | 38.48 | Boundary | 20.26 | Butte | 20.63 |
| Camas | 24.51 | Canyon | 26.50 | Caribou | 30.81 | Cassia | 29.48 |
| Clark | 17.93 | Clearwater | 25.53 | Custer | 34.50 | Elmore | 29.63 |
| Franklin | 28.09 | Fremont | 29.52 | Gem | 25.00 | Gooding | 20.68 |
| Idaho | 26.21 | Jefferson | 35.78 | Jerome | 19.18 | Kootenai | 34.18 |
| Latah | 55.08 | Lemhi | 29.34 | Lewis | 28.44 | Lincoln | 17.52 |
| Madison | 52.04 | Minidoka | 20.94 | Nez Perce | 34.79 | Oneida | 19.56 |
| Owyhee | 16.49 | Payette | 27.30 | Power | 17.51 | Shoshone | 21.89 |
| Teton | 44.28 | Twin Falls | 29.09 | Valley | 39.81 | Washington | 23.02 |

Source: Lumina Foundation, *Stronger Nation*, 2016, <https://www.luminafoundation.org>



Even taking into account the losses of the Great Recession, the net worth of college-educated American households with children **rose by 47 percent** between 1989 and 2013, whereas among high school-educated households net worth actually **fell by 17 percent** during that quarter century.”

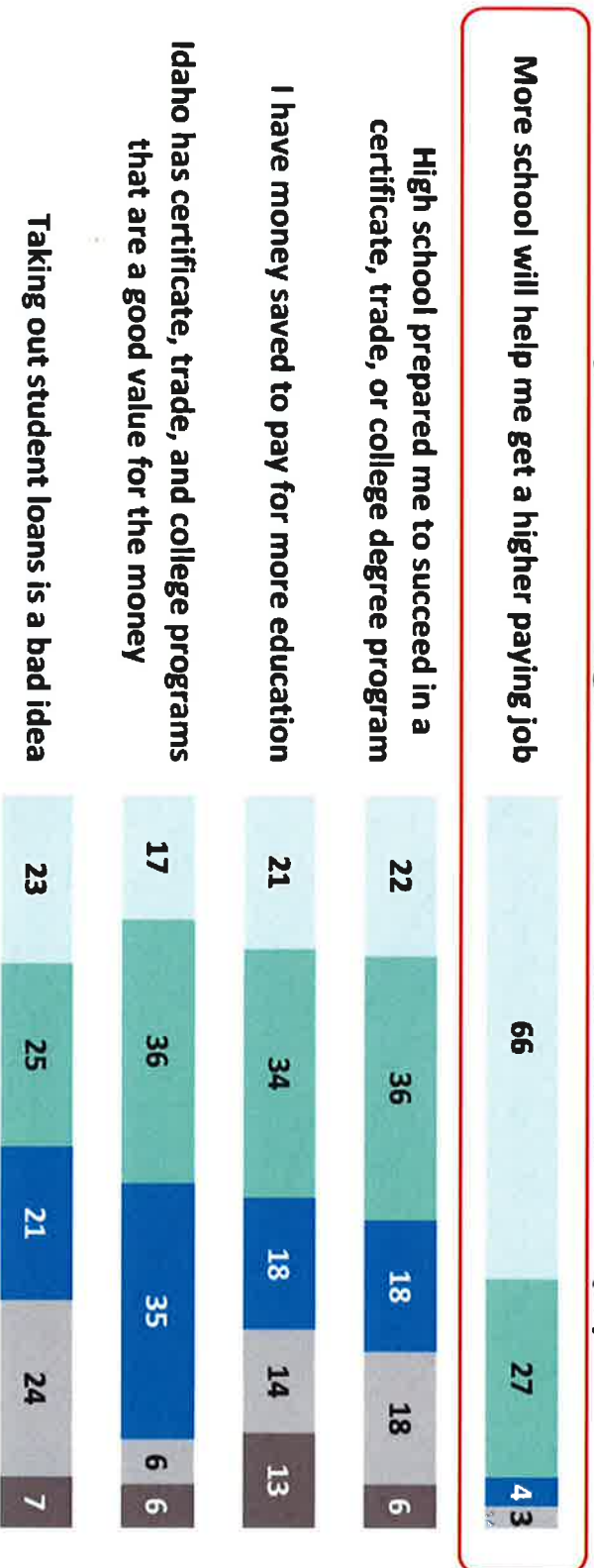
Putnam, Robert. *Our Kids: The American Dream in Crisis* (2015)



Source: Georgetown University Center on education and the Workforce, *America's Divided Recovery: College Haves and Have-Nots*, 2016, <https://cew.georgetown.edu/cew-reports/americas-divided-recovery/>.

Life after High School

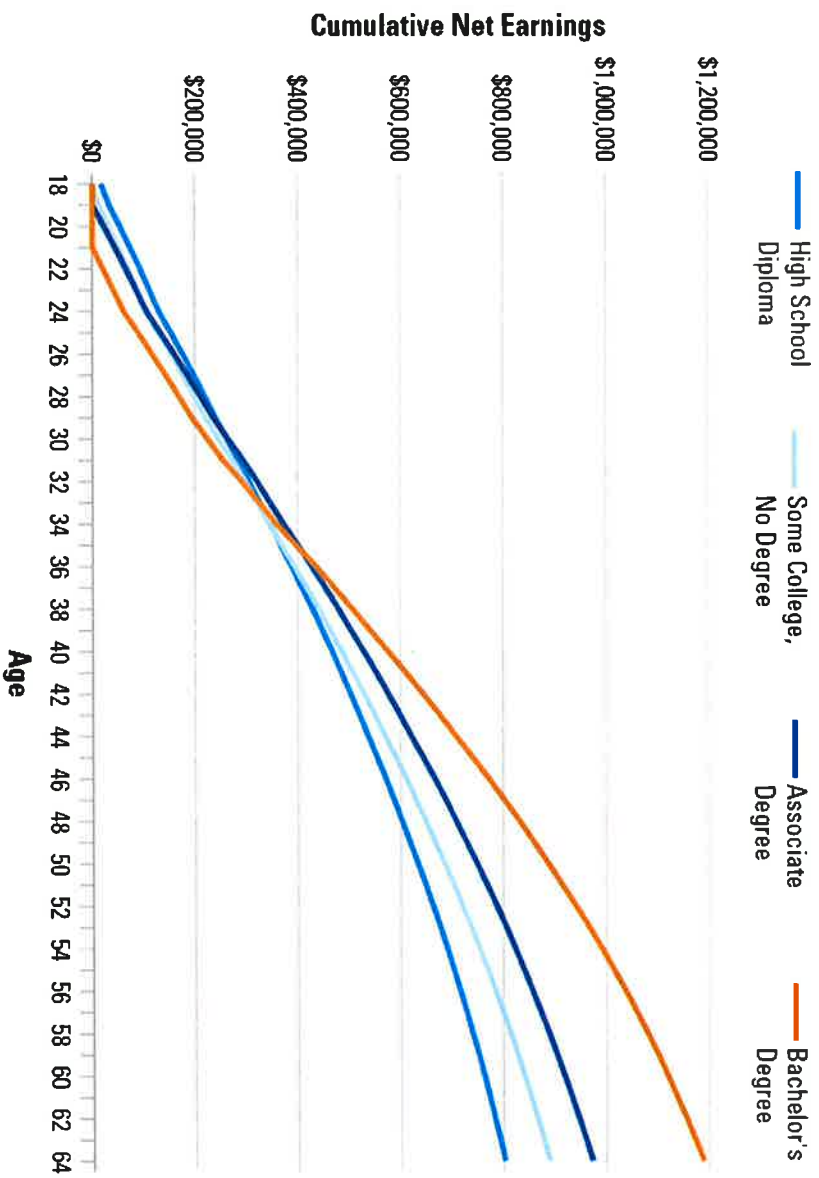
Perceptions about high school and life afterwards (%)



■ Strongly agree
 ■ Somewhat agree
 ■ Neutral or no answer
 ■ Somewhat disagree
 ■ Strongly disagree

Source: University of Idaho McClure Center for Public Policy Research, *Life after High School*, January 2016, Vol. 7, No. 1, <http://www.uidaho.edu/class/mcclure-center>

Earnings Premium Relative to Price of Education



Source: The College Board, Education Pays 2016, Figure 2.2A

College Degree is Still a Good ROI

- Benefits of associate's and bachelor's degrees far outweigh costs
- Both degrees have earned a return of about 15% over the past decade (2001-2013)
- Since 1950, investing in stocks has yielded an annual return of 7%; bonds 3%
- Economic benefits associated with a college degree last an entire lifetime

