



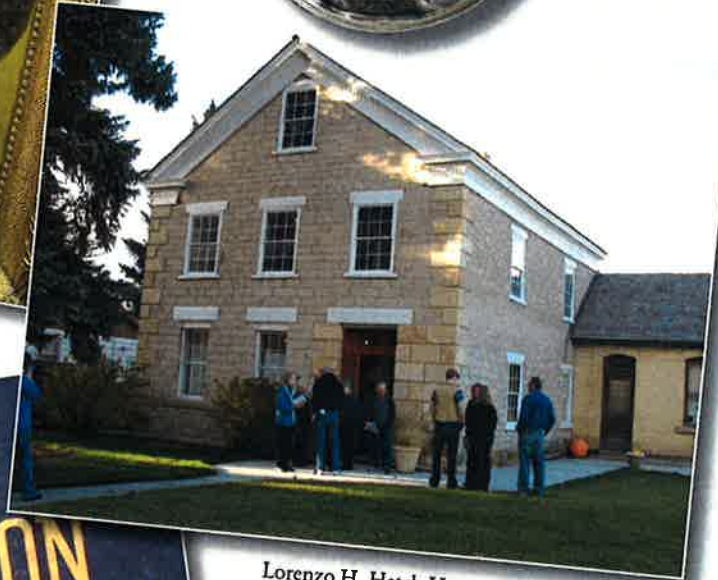
# Collections and Cultural Resources Under Management



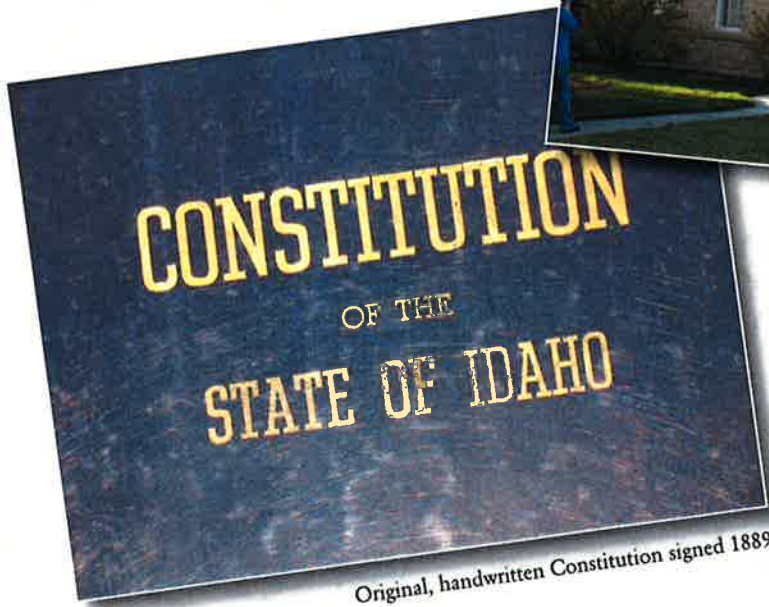
State Seal painted by Emma Edwards Green, 1893



Jefferson Peace Medal ca 1803



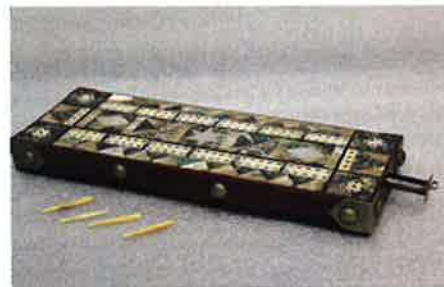
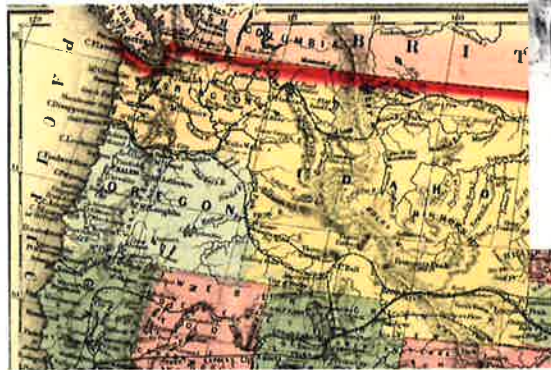
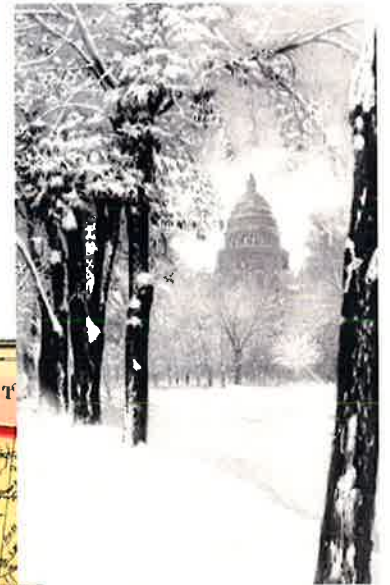
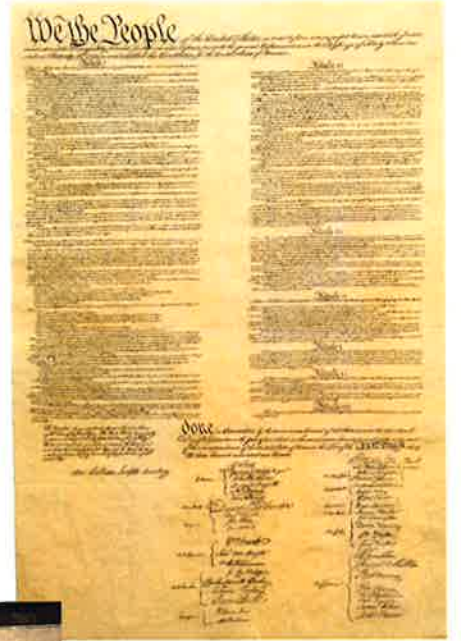
Lorenzo H. Hatch House in Franklin, built 1872



Original, handwritten Constitution signed 1889



# Idaho State Historical Society



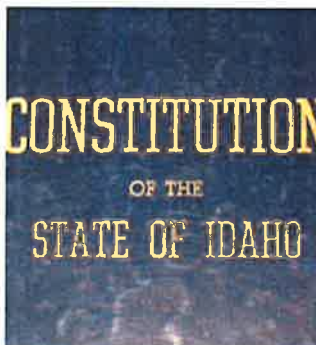
## Stewardship of State Cultural Resources

**The Idaho State Historical Society** provides preservation, rehabilitation, restoration, and reconstruction management services for the State of Idaho's sixty-one historic buildings. This includes planning, maintenance, and treatment in accordance with the Secretary of the Interior's Standards for the Treatment of Historic Properties.



**The State Historic Preservation Office** manages the Archeology Survey of Idaho and its western epository, providing collections management for the State of Idaho's 30,000 archeological collections, including inventory, cataloging, and environmentally controlled storage.

**The State Museum** provides collections management for the State of Idaho's approximately 50,000 objects, including activities such as cataloging, photo documentation, preservation, incoming and outgoing loans to organizations throughout the state, and environmentally-controlled storage.



**The State Archives** provide archival management for the State of Idaho's 98,500 cubic feet of official government records, including photographs, manuscripts, maps, books, periodicals, and oral history interviews. Services include cataloging, digitization, preservation, Inter-library Loan services, and environmentally-controlled storage.



*The Idaho State Archives holds the most comprehensive collection of Idaho and regional history materials in the state, including:*



98,500 cubic feet of official government records, manuscript and state archives material, such as the personal papers of Senator William E. Borah; records of the Territorial government; gubernatorial papers from George Shoup through Dirk Kempthorne; records of the Idaho Soldiers' Home; and records of the Women's Challenge Bicycle Race, a national qualifying event for women cyclists that was originally sponsored by Ore-Ida, a Boise-based company.



30,000 rolls of microfilm available for reproduction, including Idaho newspapers dating from 1863 to present, county-level records (land and property, citizenship, court, vital and tax) dating from 1863, Sanborn fire insurance maps for many Idaho cities, Idaho death certificates (1911-1937), federal

census schedules (1790-1930), theses and dissertations on Idaho topics, and a variety of materials related to Idaho history and purchased from the National Archives.



500,000 photographic images (prints, negatives, slides, and transparencies), including images taken by E. Jane Gay during the allotment of lands for the Nez Perce Indians; the life work of Boise photographer R. Harold Sigler; images from the Sherwood family, pioneer settlers of the Henry's Lake area of Idaho; and inmate 'mug shots' from the Idaho Territorial/State Prison.



5,000 motion picture films and videos, including a 16mm copy of a 1916 film celebrating the 10th anniversary of the town of Buhl in south central Idaho, footage of a 1935 National Geographic Society expedition on the Salmon River,

and promotional films produced by the Idaho Department of Commerce (1960s-1990s).



An extensive oral history collection with some 3,100 individual interviews (audio and video formats), with projects documenting such topics as African-Americans in Southeast Idaho, Czechoslovakian Culture in the Buhl-Castleford Area, Women and Political Activism in Idaho, 1945-1980, Saddle making

in Idaho, Bureau of Land Management in Idaho, and Veterans History Project.



32,000 maps, including a series of hand-drawn and hand-colored maps prepared by Idaho's first surveyor general, Lafayette Cartee, State highway maps, fire insurance maps for a variety of towns and businesses, and blueprints and architectural plans from the state's premier architectural firms, such as Tourtellotte and Hummel.



An open-stack reference collection of book and periodical titles for the study of regional, state, community, and family history.

*The Western Repository of the Archaeological Survey of Idaho documents and holds the archaeological collections from a ten-county area in southwest Idaho. All materials are identified, stabilized, conserved, labeled, archivally packaged, and electronically documented and are available for educational use in exhibits and scientific studies. Collections include:*



423 cubic feet of archaeological materials from state and private lands and 399 cubic feet of archaeological materials from federal land. These collections include donations to the Idaho State Historical Society but are mainly derived from archaeological studies being performed by federal agencies. The Western Repository meets the requirements stipulated for such federal collections.



62 linear feet of associated documents such as catalogs, field notes, photographic materials, analysis records, final reports, and maps. Materials are mostly generated by large research projects at important archaeological sites as Silver City, Idaho City, the Mary Hallock Foote House, and Givens Hot Springs.



83,000 prehistoric artifacts, faunal remains, and sediment samples; 31,000 historic artifacts from over 4,000 archaeological sites located in the ten-county area of southwest Idaho.



Archaeological site context materials such as faunal and plant remains and soil and charcoal samples. These collections provide important sources for future analytical techniques relative to studying environmental as well as cultural change.



*The Idaho State Museum is Idaho's official state historical museum that holds, preserves, and documents Idaho's largest collection of material culture with over 50,000 artifacts.*



**The Military in Idaho**

Artifacts from Fort Boise, Pocatello Air Base, Farragut Naval Training Station, Gowen Field, and Idaho veterans showcase our state's proud military tradition.

The J. Curtis Earl collection features arms and armaments from the Bronze Age to those used today for sport, law enforcement, and military purposes. It also includes medieval arms and armor, Revolutionary War and Civil War artifacts, an 1883 Gatling gun on its original carriage used on the Western frontier, 19th century pistols and rifles used in the West, and WW I and II rifles, pistols, machine guns, mortars, and cannons.



**Business, Industry, and Transportation in Idaho**

The evolving nature of business and industry founded or headquartered within the state is explored in the collections. Mining, logging, farming, ranching, engineering, food production, transportation, retail, and technology are all represented.



**State Governance and Politics**

Objects depicting the role of federal and state government and politics illustrate the development and evolving character of Idaho. This includes artifacts used by notable state elected officials and employees, pieces from significant state events and functions, and those documenting citizen-generated political activities.



**Historical Costumes and Textiles**

Clothing and textile artifacts, including first lady inaugural gowns, quilts representing many eras and patterns, military uniforms from the Civil War through today, and a 1967 stage costume worn by Idahoan Paul Revere of Paul Revere and the Raiders are all a part of the State Museum collection.



**Early Euro-American Exploration and Westward Expansion**

A Jeffersonian Peace medal, early fur trade artifacts, and family heirlooms carried on the Overland Trail document Idaho's early settlement.



**Life in Idaho**

Simple artifacts like sports trophies, confirmation dresses, and dishes illuminate the rich cultural, social, religious, economic, political, and ethnic diversity found within our state.



**Ethnographic and Contemporary Native American History in Idaho**

Objects representing Idaho's five federally recognized tribes help tell the story of our state's earliest inhabitants. Collections range from Nez Perce Chief Looking Glass's tomahawk pipe to contemporary pow-wow regalia.



**Rich Cultural Diversity**

Artifacts in the collection explore Idaho's multicultural heritage. The Ah Fong Collection, representing three generations of Chinese doctors in the state, is one of the largest apothecary collections outside of China.



**Art in Idaho**

Idaho's breathtaking landscape has inspired artists from the beginning. From the first state seal designed by a woman to a bronze statue of Sacajawea, art features prominently in the collections.



The Idaho State Historical Society is an extraordinary system of cultural and historic resources comprised of the Idaho State Historical Museum, Idaho State Archives and State Records Center, the State Historic Preservation Office and Historic Sites Program. We seek to inspire, enrich and engage all Idahoans by leading the state in preserving, sharing, and using history and cultural resources relevant to today to inform and influence the future.

Governor C.L. "Butch" Otter  
Janet L. Gallimore, Executive Director

### Idaho State Historical Society Trustees

Don Pischner, District 1, Coeur d'Alene  
Earl Bennett, Vice Chair, District 2, Genesee  
Bill Butticci, District 3, Emmett  
Ernest A. Hoidal, District 4, Boise  
Tom Blanchard, Chair, District 5, Bellevue Paul Smith, District 5, Twin Falls (term beings 1/1/2018)  
Jim Johnston, District 6, Pocatello  
Hope Benedict, District 7, Salmon

### Affiliate Boards

Foundation for Idaho History  
Friends of the Historical Museum and Old Idaho Penitentiary  
State Historical Records Advisory Board  
Friends of Stricker Ranch, Hansen  
Franklin Pioneer Association and the City of Franklin  
J. Howard Bradbury Logging Museum and the City of Pierce  
Historic Sites Review Board  
Archaeological Survey of Idaho Board  
Idaho Geographic Names Advisory Council  
Governor's Lewis and Clark Trail Committee

### *Become a Member Today!*

It means more with a membership card. It's your key to all kinds of exclusive collections, cultural resources, tours, and events. Be part of history and join now at 208-334-2682 or online at [www.history.idaho.gov](http://www.history.idaho.gov).



2205 Old Penitentiary Road, Boise, Idaho 83712, 208-334-2682

