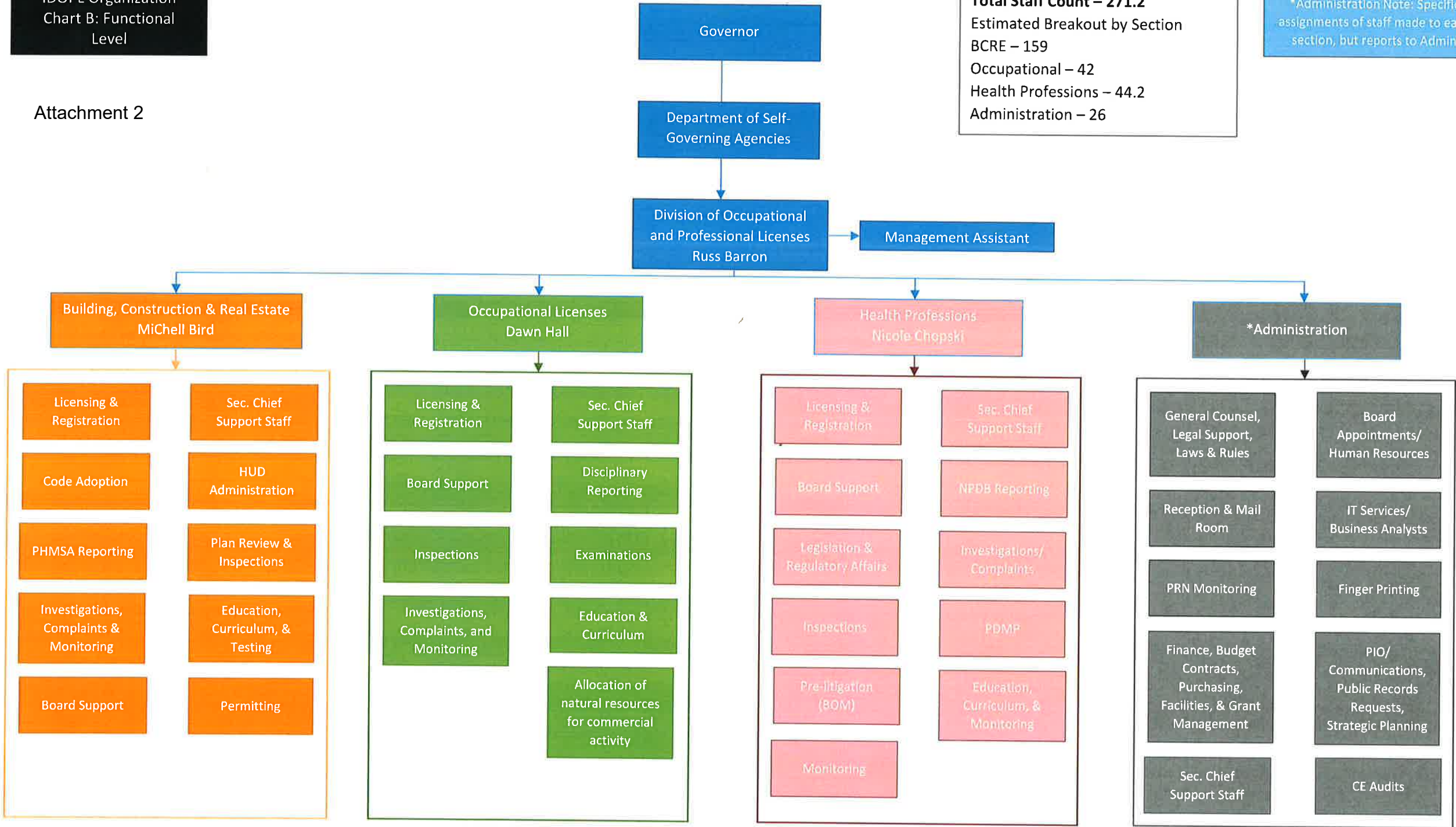


**IDOPL Organization  
Chart B: Functional  
Level**

Attachment 2

**Total Staff Count – 271.2**  
 Estimated Breakout by Section  
 BCRE – 159  
 Occupational – 42  
 Health Professions – 44.2  
 Administration – 26

\*Administration Note: Specific assignments of staff made to each section, but reports to Admin



**SUBJECT TO CHANGE**