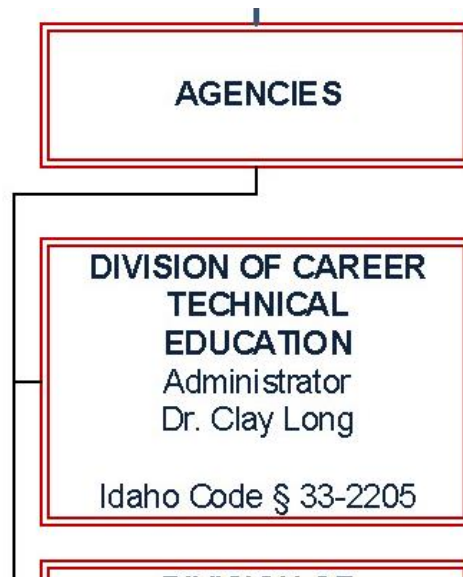


2023 JFAC Presentation

Clay Long, State Administrator



Our mission:

To prepare Idaho's youth and adults for high-skill, in-demand careers.

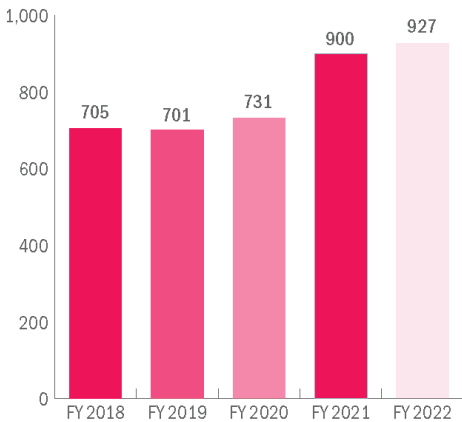




* Idaho Constitution Article IX, Section 2
"The general supervision of the state educational institutions and public school system of the state of Idaho, shall be vested in a state board of education, the membership, powers and duties of which shall be prescribed by law."



Secondary snapshot

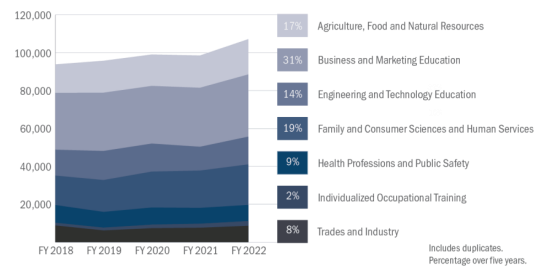


149 SCHOOL DISTRICTS

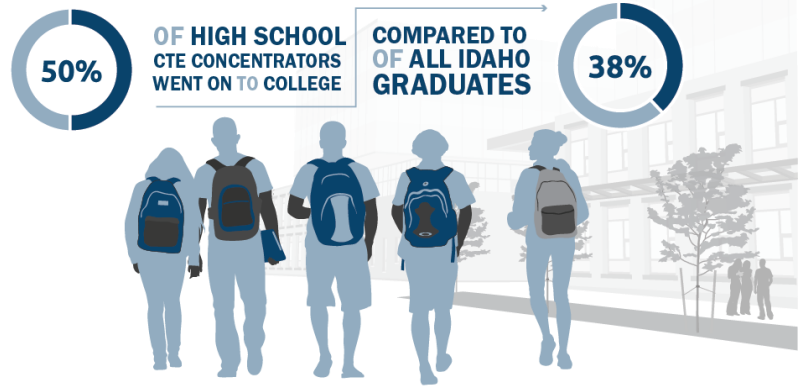
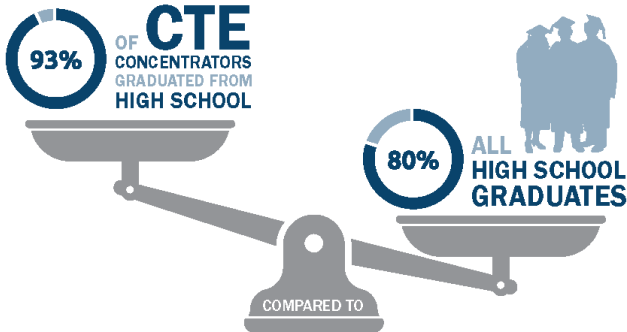
16 CAREER TECHNICAL SCHOOLS
19,971 STUDENTS ENROLLED
OR **18%**

1,685 CTE DIPLOMAS AWARDED

NEARLY 70K STUDENTS ENROLLED IN CTE PROGRAMS



Secondary snapshot



Source: IDCTE 2021/2022 Annual Report

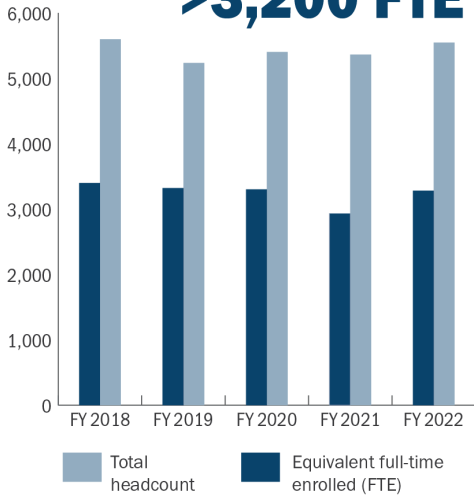
Postsecondary snapshot



Source: IDCTE 2021/2022 Annual Report

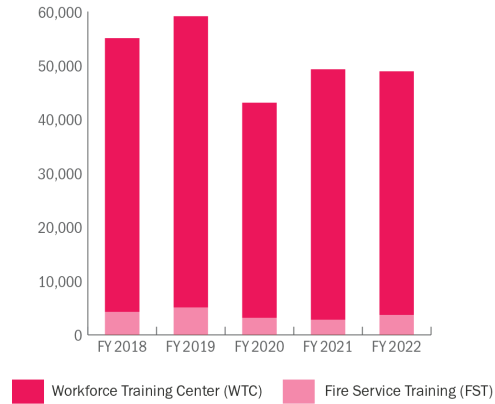
Postsecondary snapshot

>5,500 STUDENTS ENROLLED
>3,200 FTE



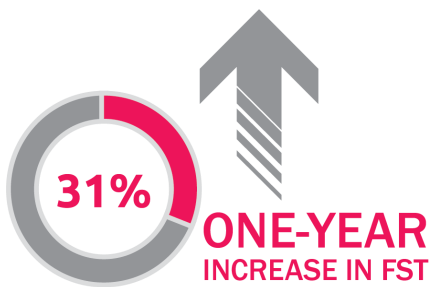
284 TOTAL PROGRAMS

98,429 YEAR-END CREDITS



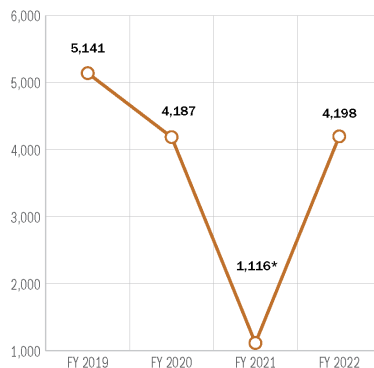
Source: IDCTE 2021/2022 Annual Report

Related Programs



4,187 CLIENTS SERVED

NUMBER OF CLIENTS SERVED IN ADULT EDUCATION PROGRAMS



*Lower due to coronavirus.



FY 2023 Approved Line Items (LBB 1-104)

Secondary program added-cost funding	\$702,600
Program Quality Expansion Grants	127,000
Program Quality Manager position	113,900
Postsecondary CTE program expansion	1,020,000
Federal Apprenticeship Grant	649,800
Governor Little's Leading Idaho	10,000,000



FY 2024 Line-Item Request (LBB 1-106)

1. Additional CTE Personnel



FY 2024 Line-Item Request (LBB 1-107)

2. Expansion of postsecondary CTE programs



FY 2024 Line-Item Request (LBB 1-107)

3. Increase to secondary program-added cost funds



FY 2024 Line-Item Request (LBB 1-108)

4. Federal Apprenticeship Grant



FY 2024 Line-Item Request (LBB 1-108)

5. Luma Appropriation Realignment



FY 2024 Line-Item Request (LBB 1-108)

6. Firefighter Training Grant



FY 2024 Line-Item Request (LBB 1-108)

Budget Law/Exemptions



FY 2024 Line-Item Request (LBB 1-108)

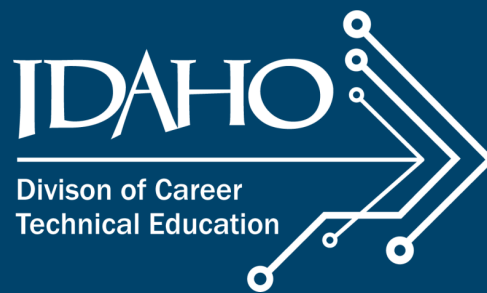
HR Consolidation



FY 2024 Line-Item Request (LBB 1-108)

Governor-recommended 4% CEC





Questions?

Clay Long, Ph. D

Clay.long@cte.idaho.gov | 208-429-5530 | cte.idaho.gov