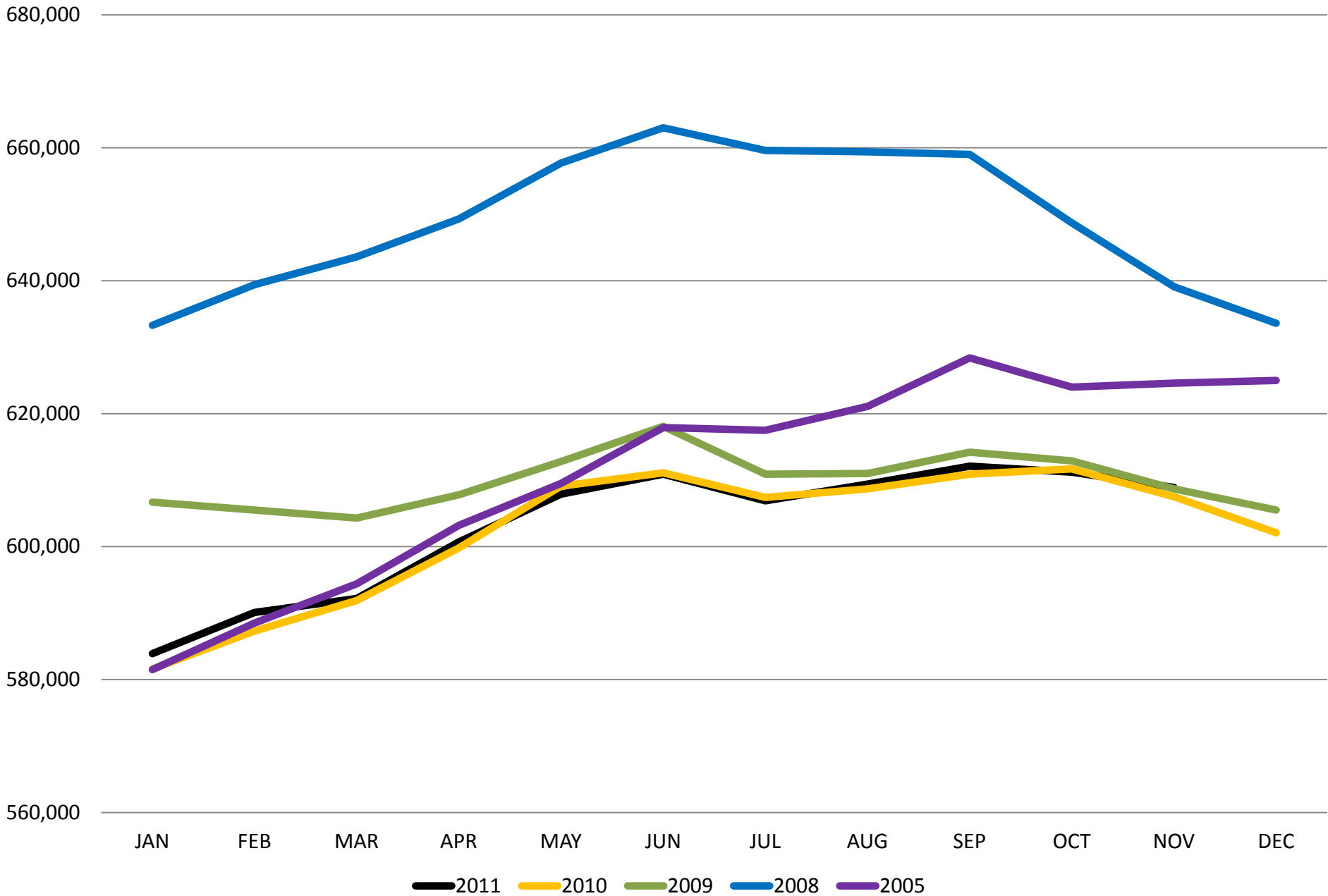




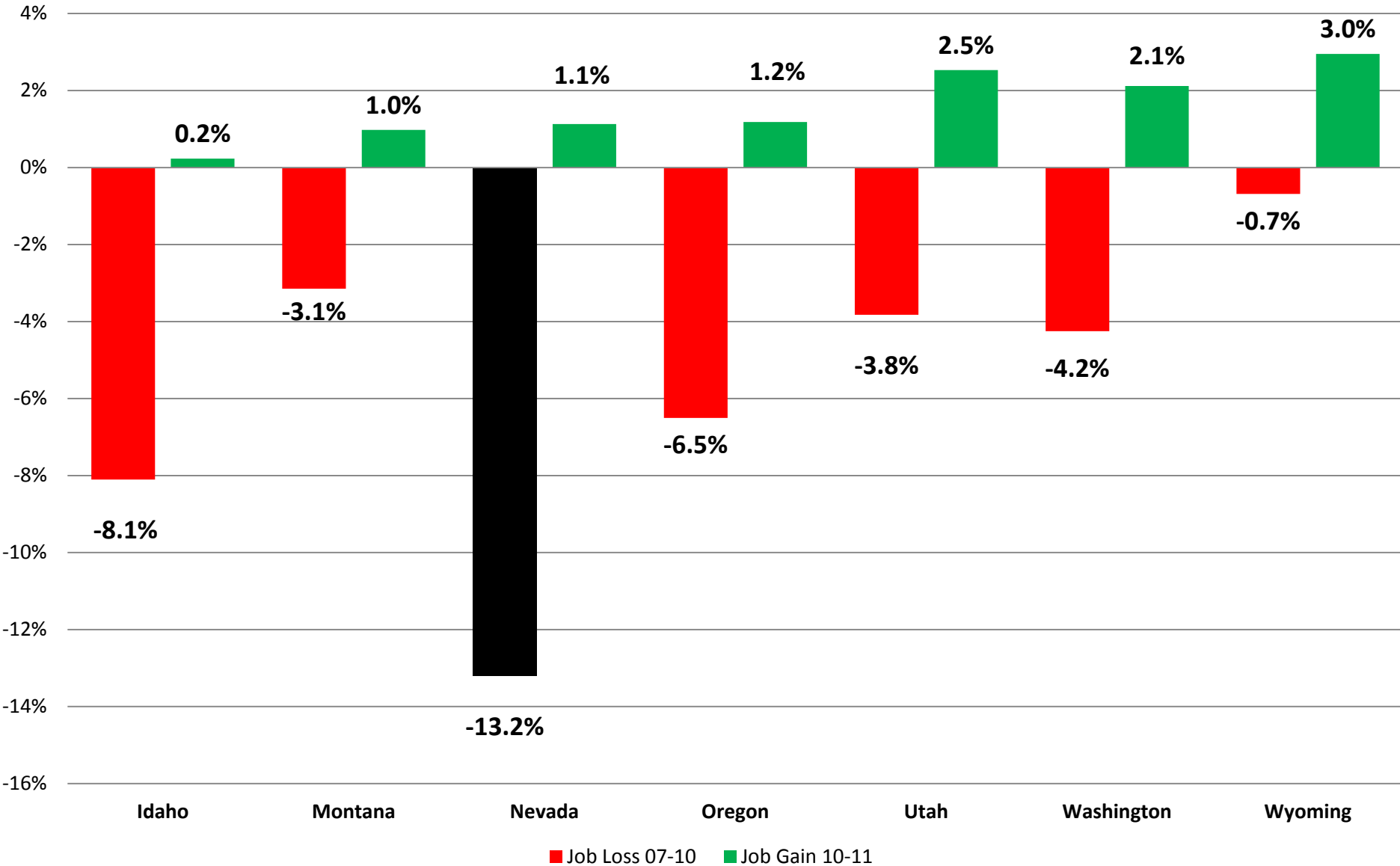
# **Economic Outlook and Revenue Assessment Committee**

Idaho Department of Labor  
Communications and Research  
Jan. 5, 2012

# Idaho Nonfarm Jobs

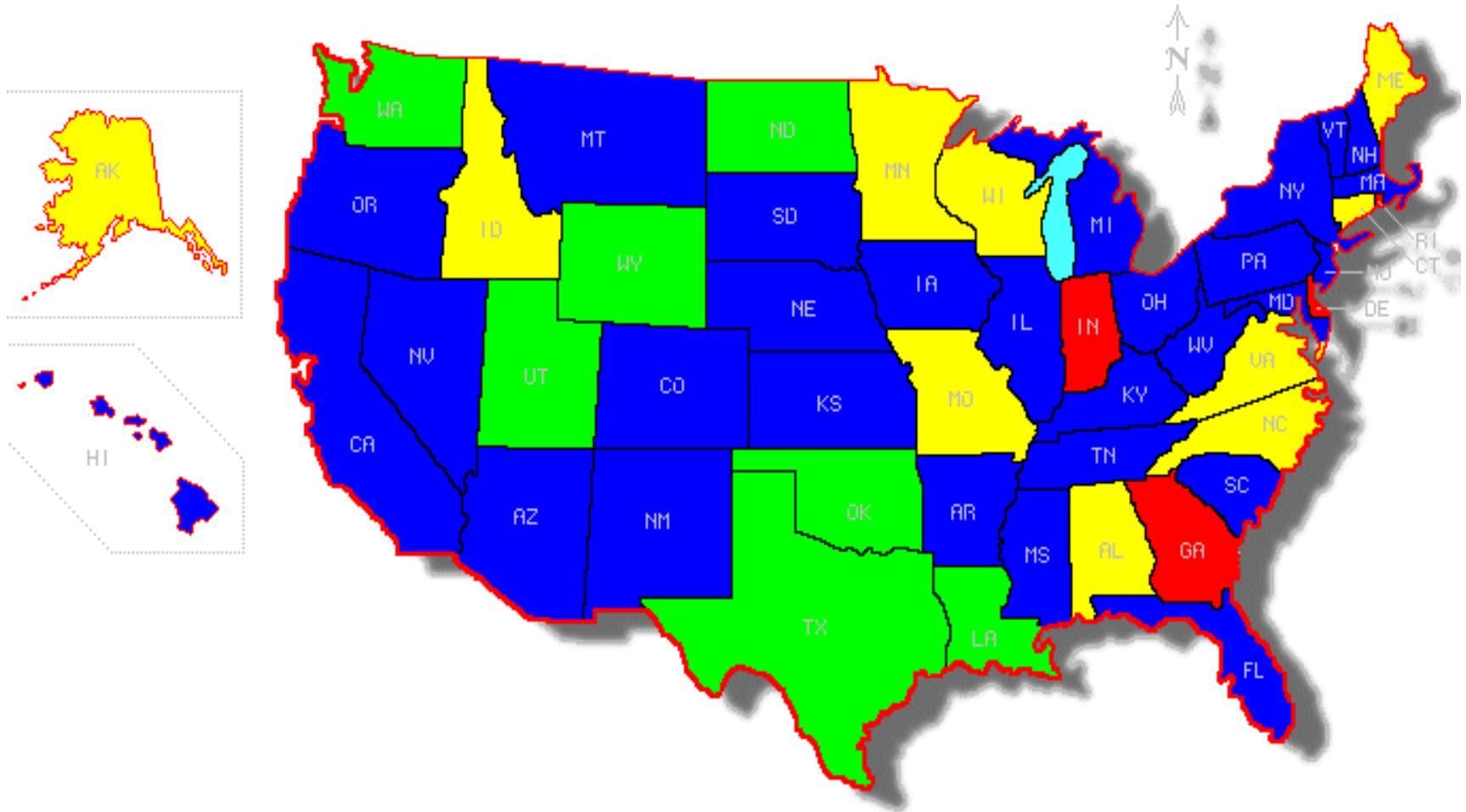


# Percentage Change in Jobs During and After the Recession (November 07-10 and November 10-11)



# Percentage Change in Jobs by State

November 2010-November 2011



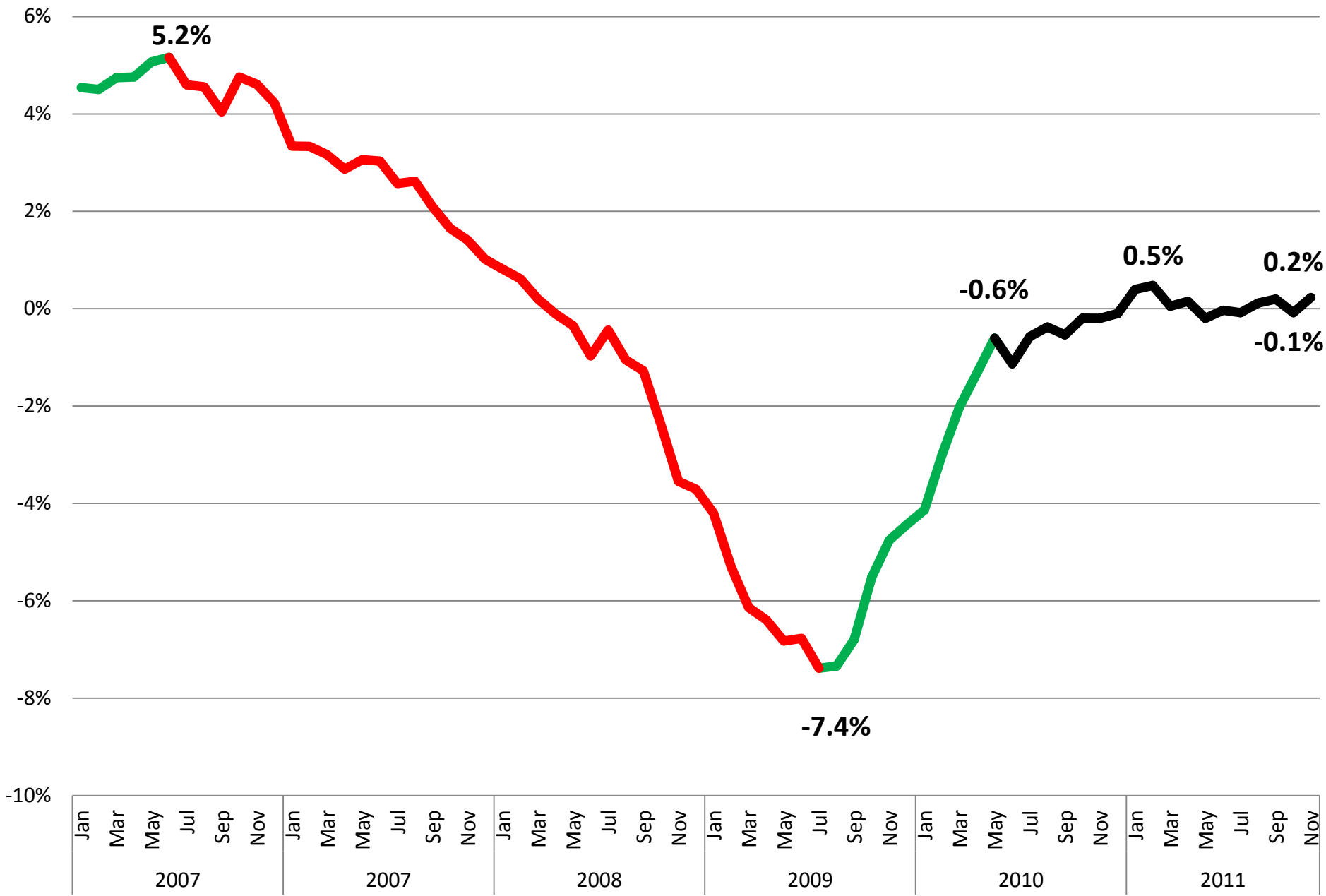
Increase Over 2%

Increase 0.6 to 2%

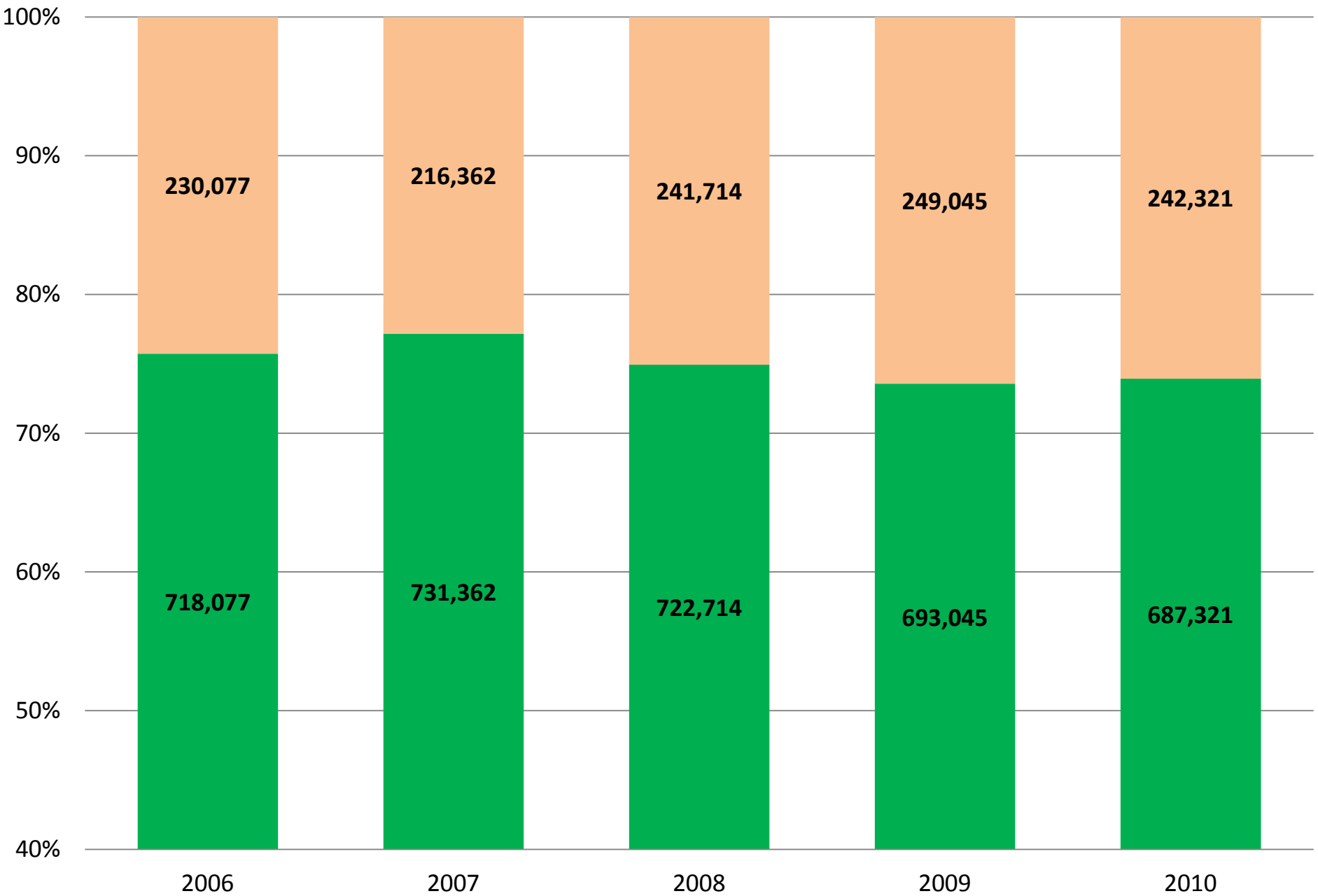
Increase 0 to 0.5% - Idaho 0.2%

Decrease

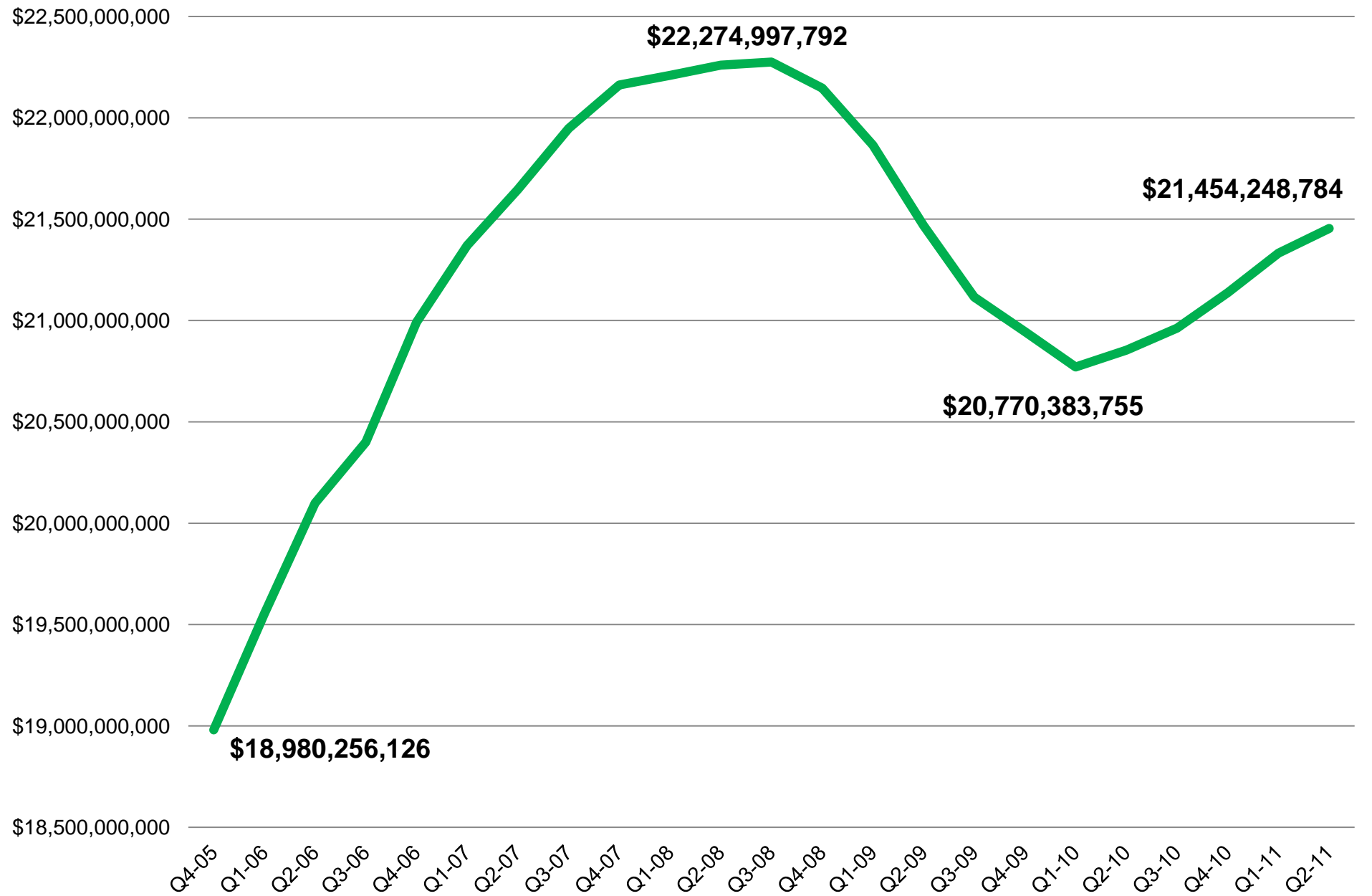
# Year-Over-Year Percentage Change in Jobs



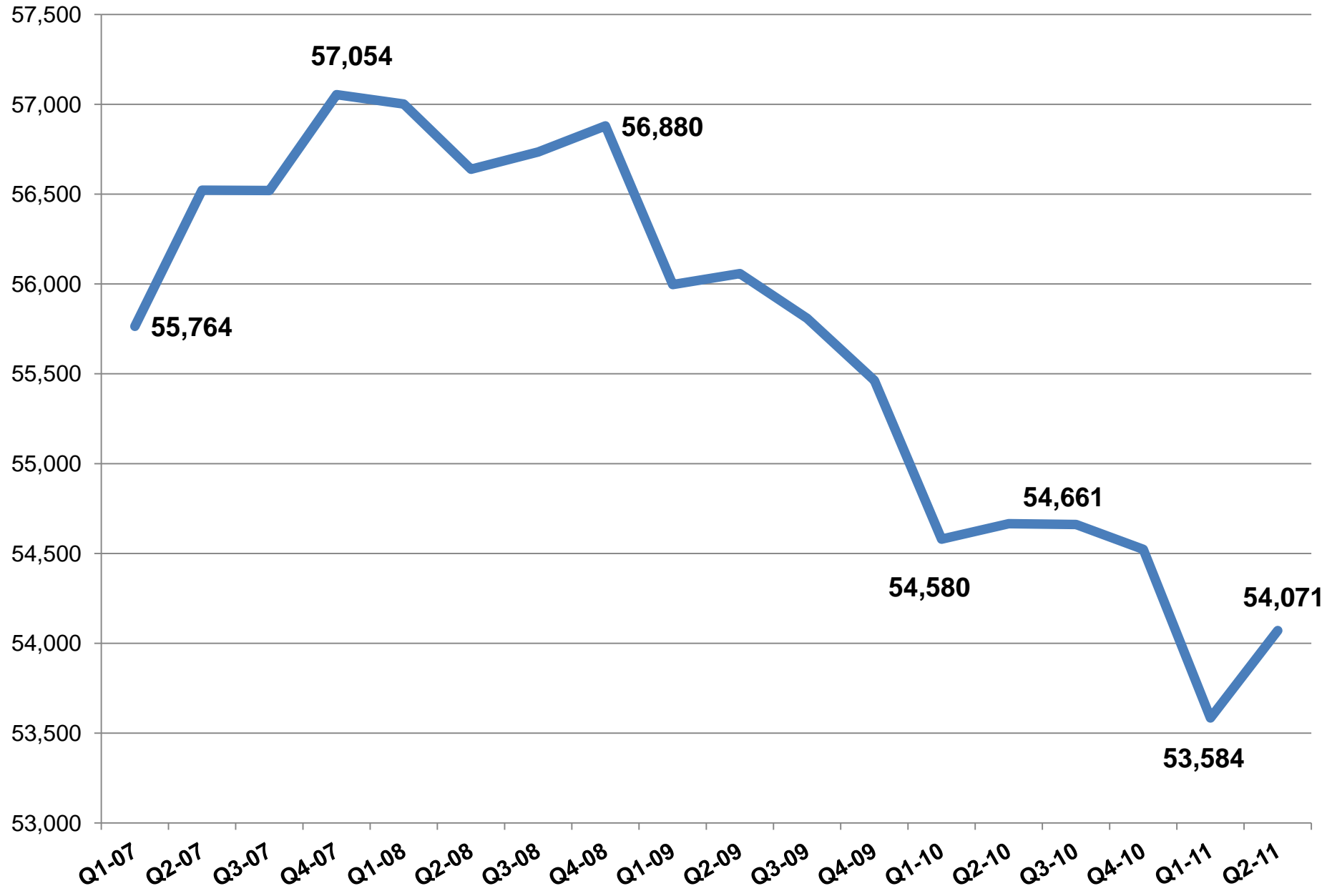
# Part-Time Jobs In the Idaho Economy



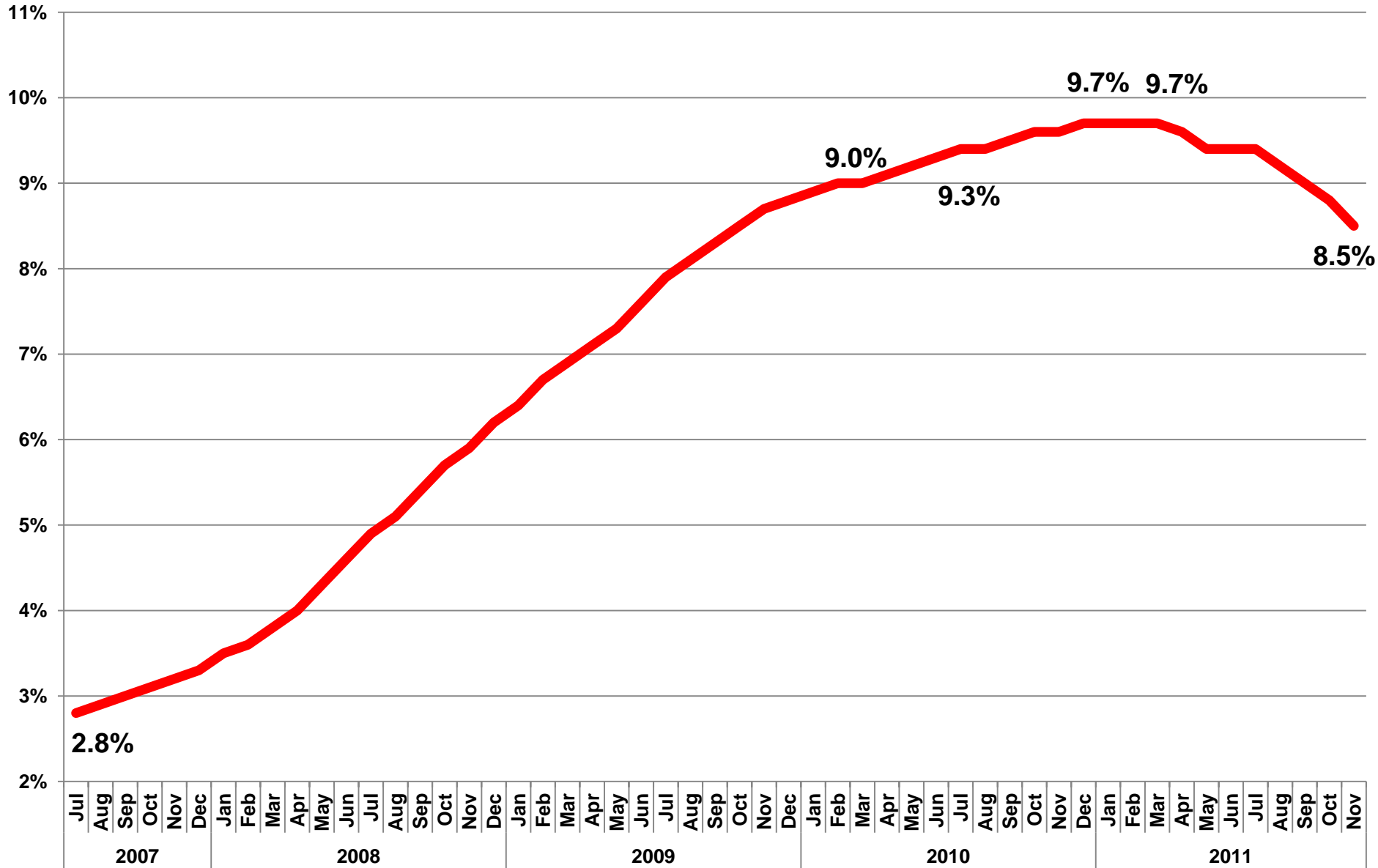
# Total Wages by Quarter, Annualized



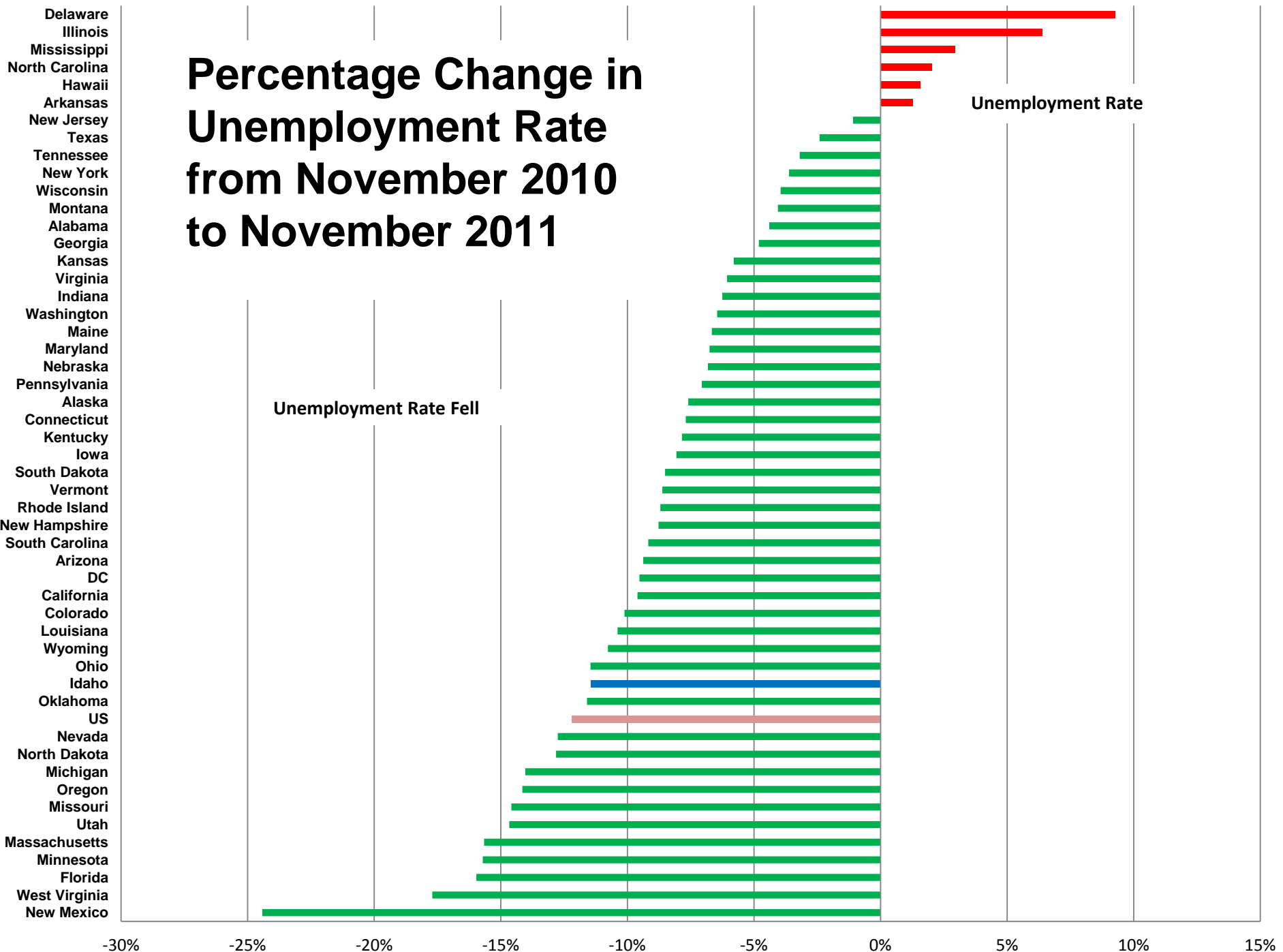
# Idaho Employers by Quarter, 2007-Q2 2011



# Monthly Unemployment Rate



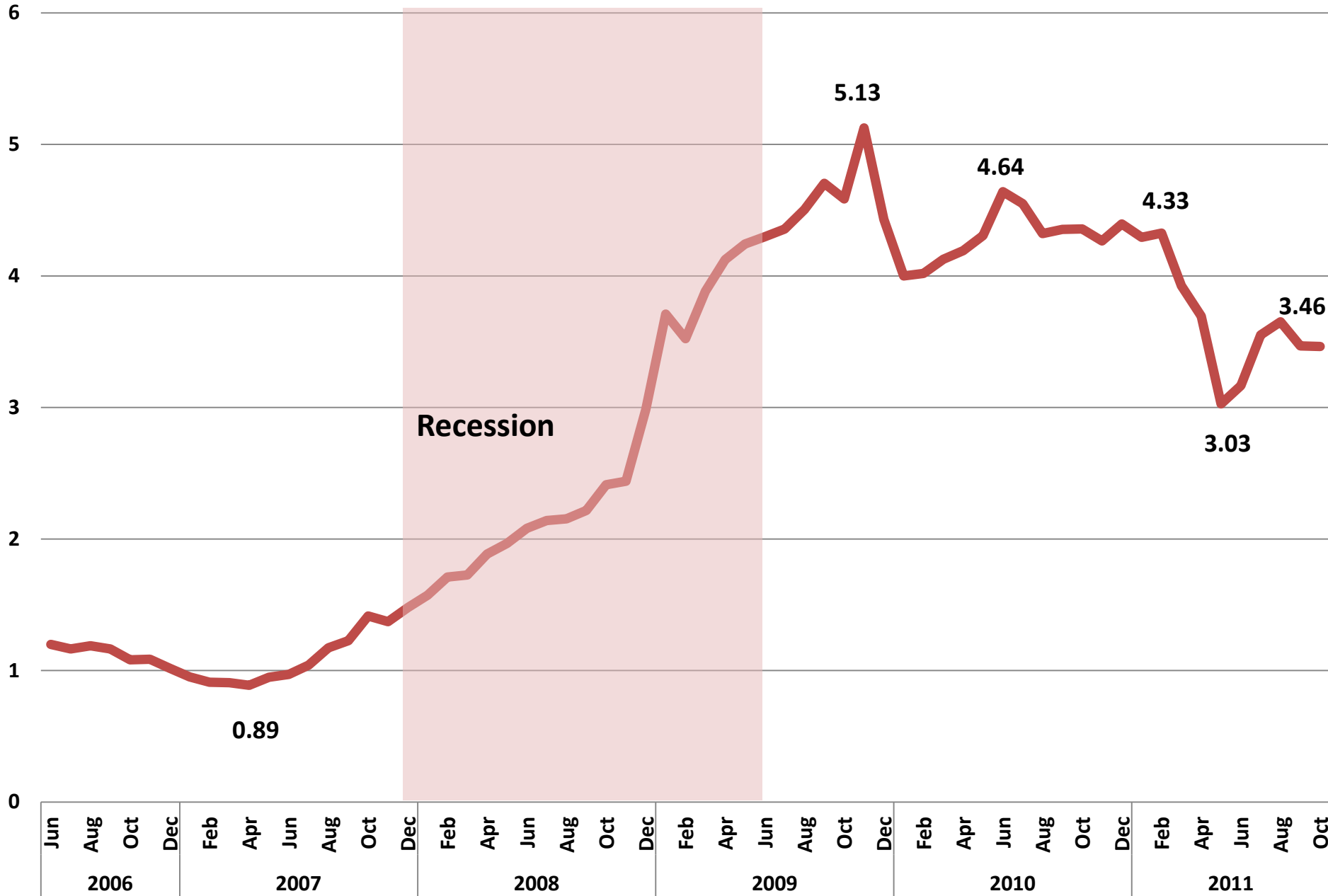
# Percentage Change in Unemployment Rate from November 2010 to November 2011



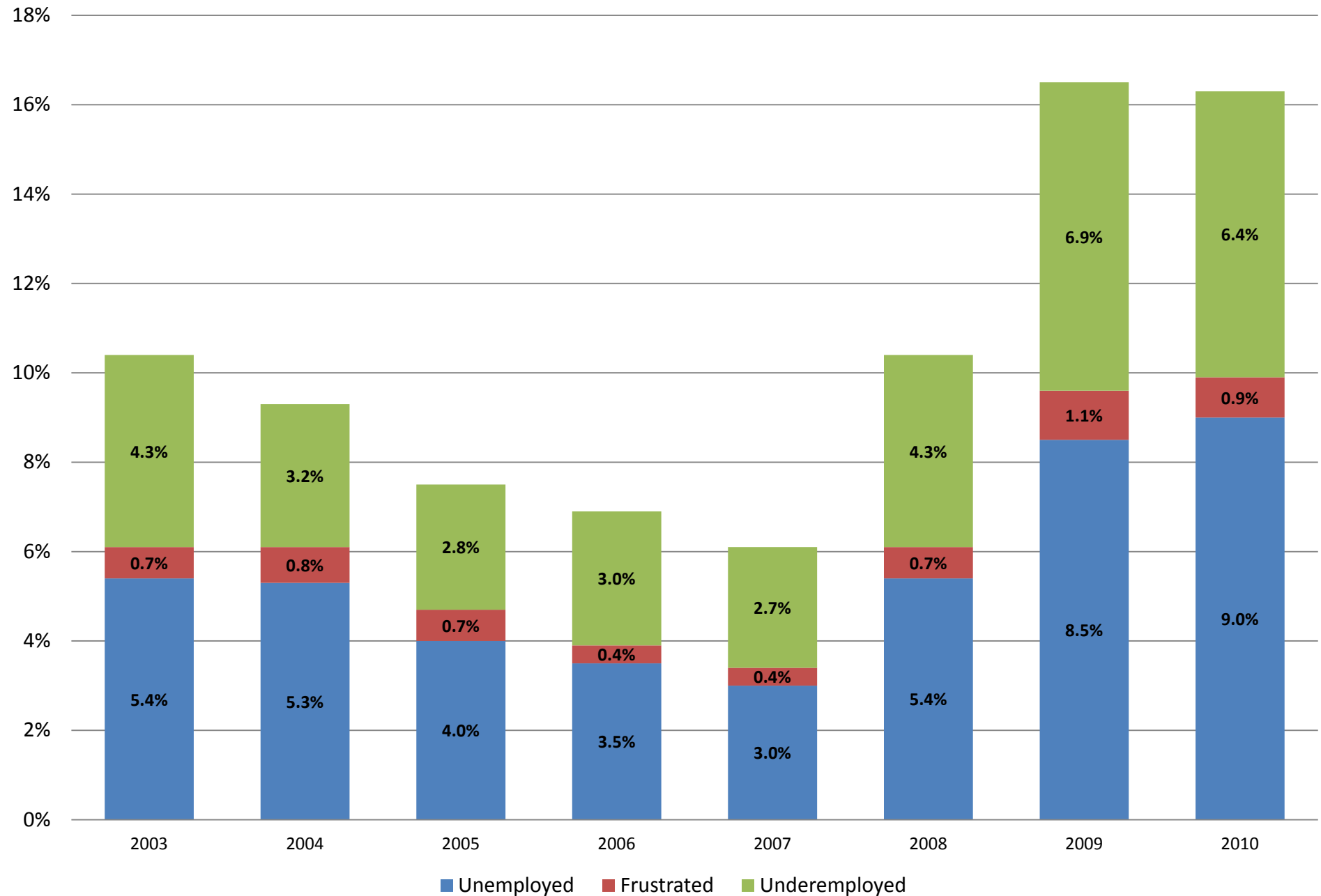
# Monthly Exhaustion Rate, 1972-2011



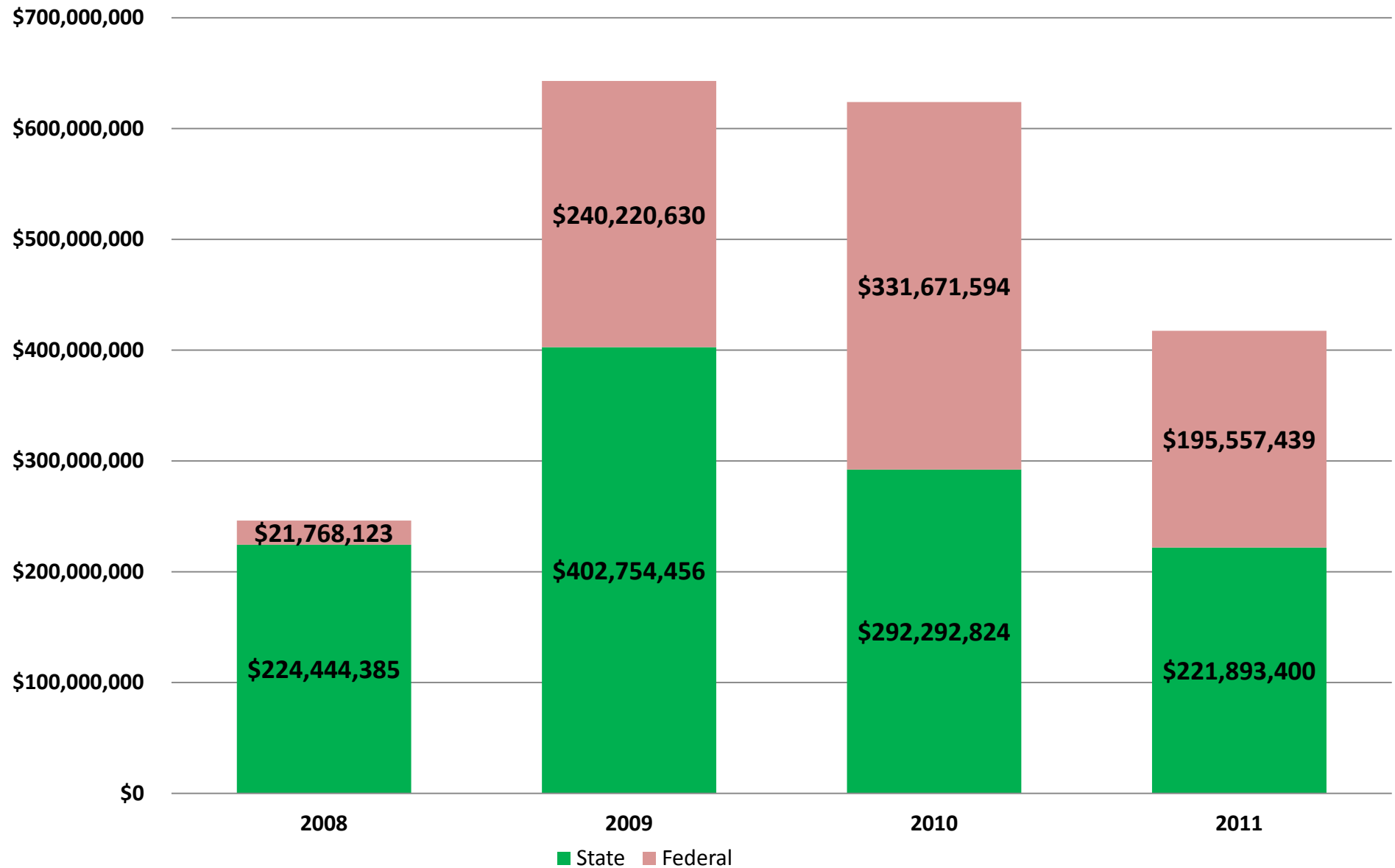
# Number of Unemployed Idahoans Per Job Opening



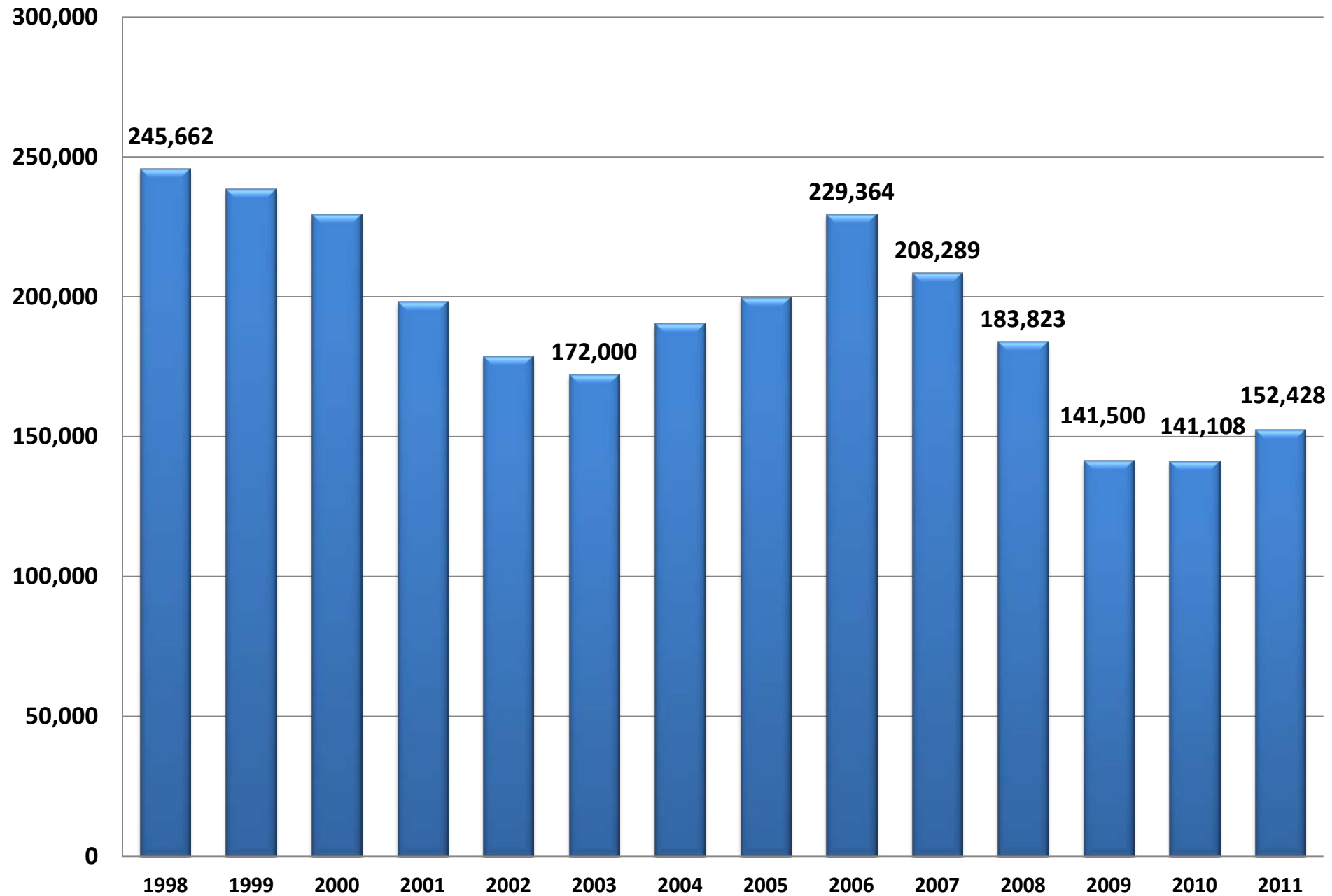
# Total Unemployment and Underemployment



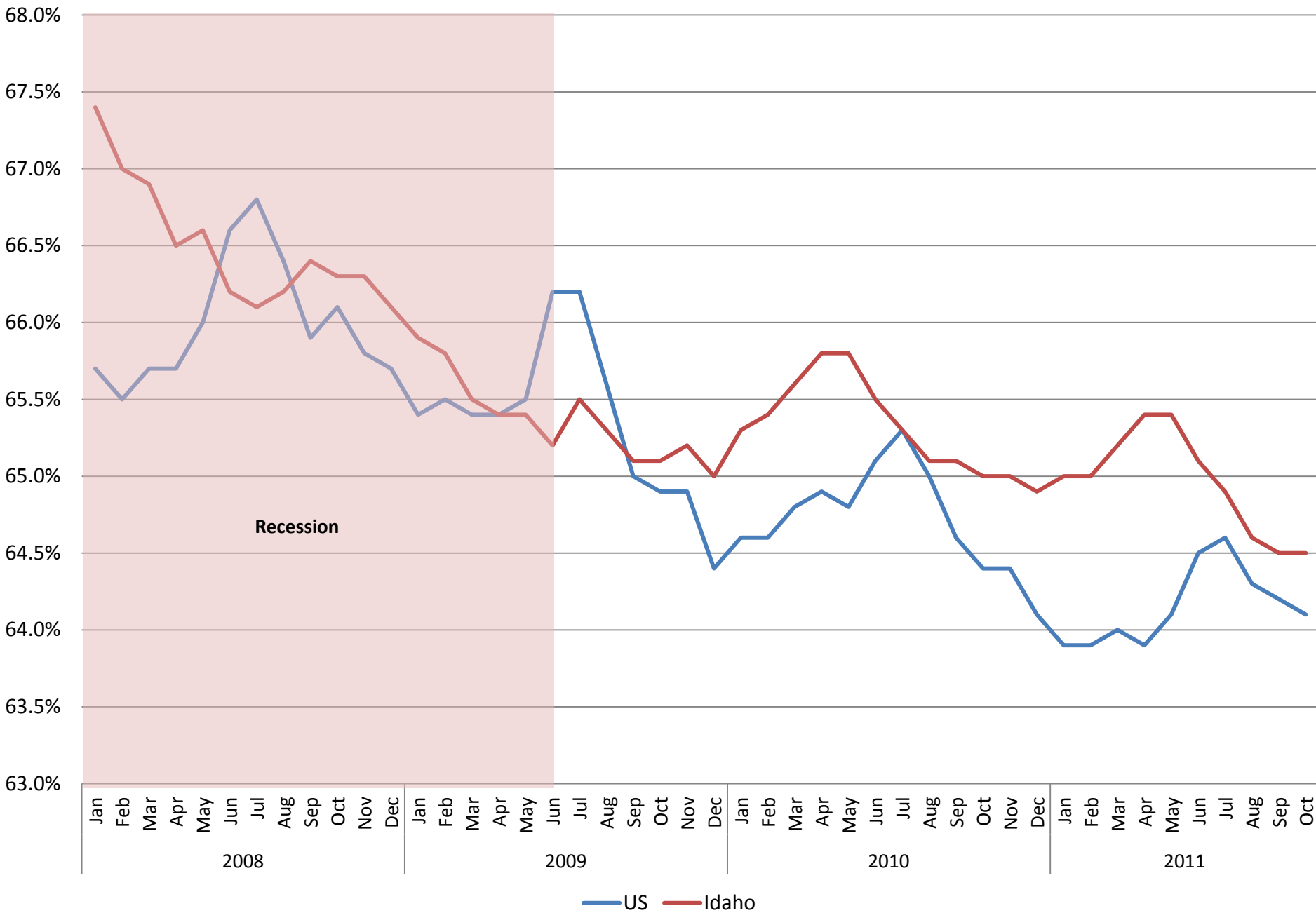
# Annual Unemployment Insurance Benefit Payments



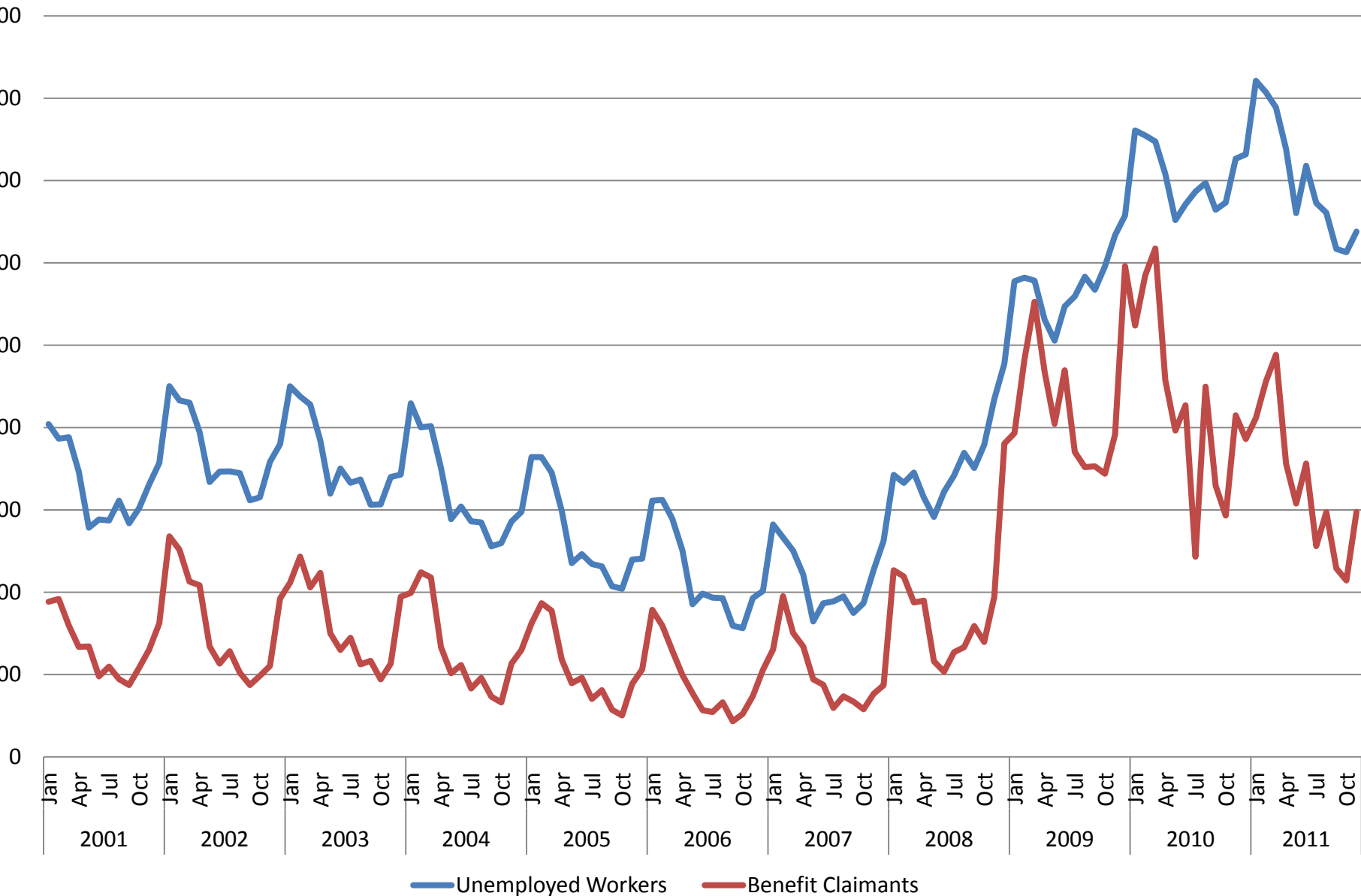
# New Hires



# Monthly Labor Participation Rate



# Number of Unemployed Workers and Workers Getting Benefits



# Change in Median Household Income, 2009-2010

-5% to -14.3%

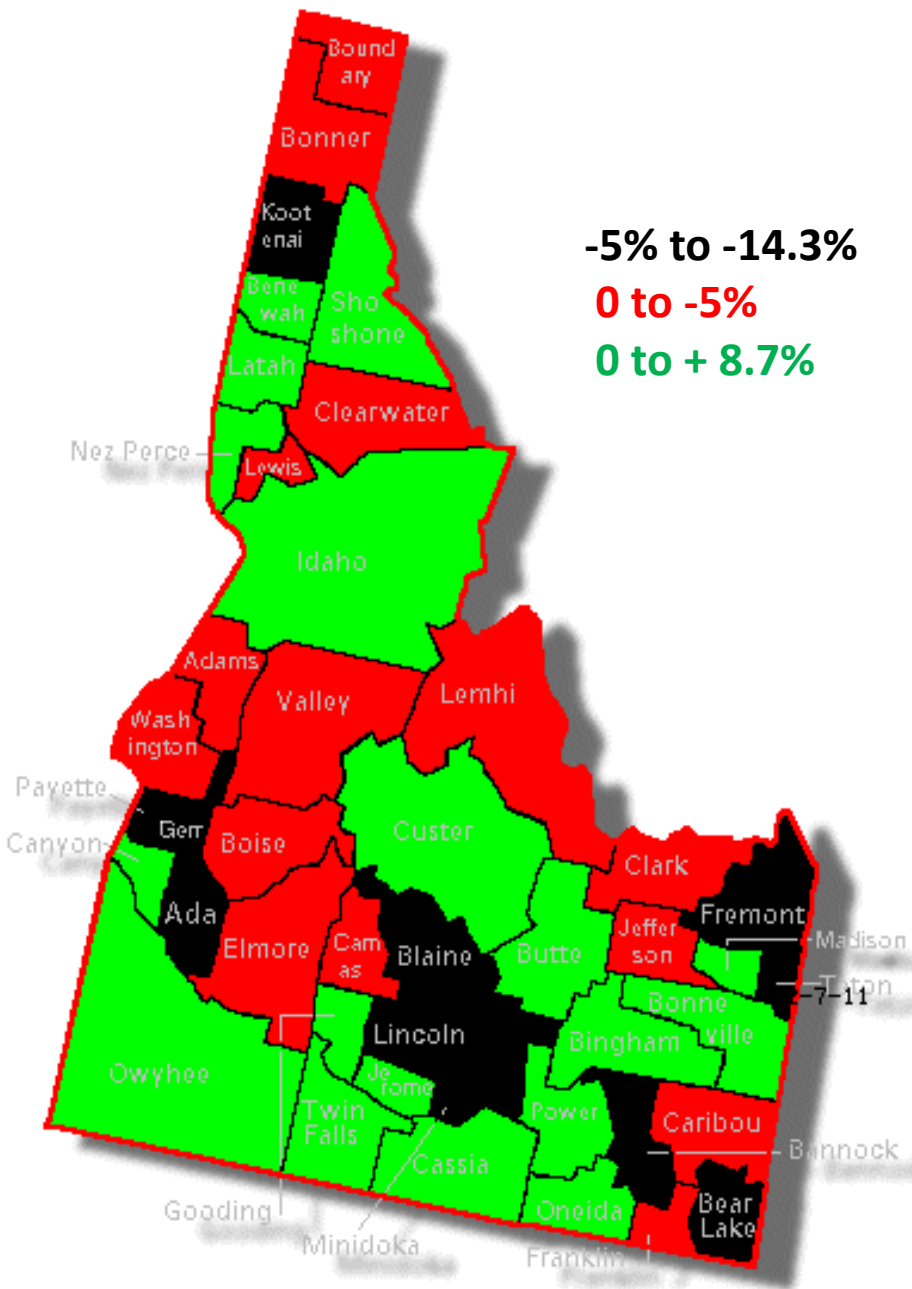
0 to -5%

0 to + 8.7%

-5% to -14.3% – Lincoln, Payette, Teton, Bannock, Kootenai, Fremont, Bear Lake, Blaine, Ada, Gem and Minidoka

0 to -5% – Valley, Boise, Clearwater, Boundary, Caribou, Elmore, Adams, Franklin, Bonner, Camas, Lewis, Washington, Jefferson, Clark and Lemhi

0 to +8.7% – Bingham, Benewah, Cassia, Bonneville, Nez Perce, Jerome, Butte, Custer, Twin Falls, Madison, Idaho, Power, Shoshone, Oneida, Gooding, Latah, Canyon and Owyhee

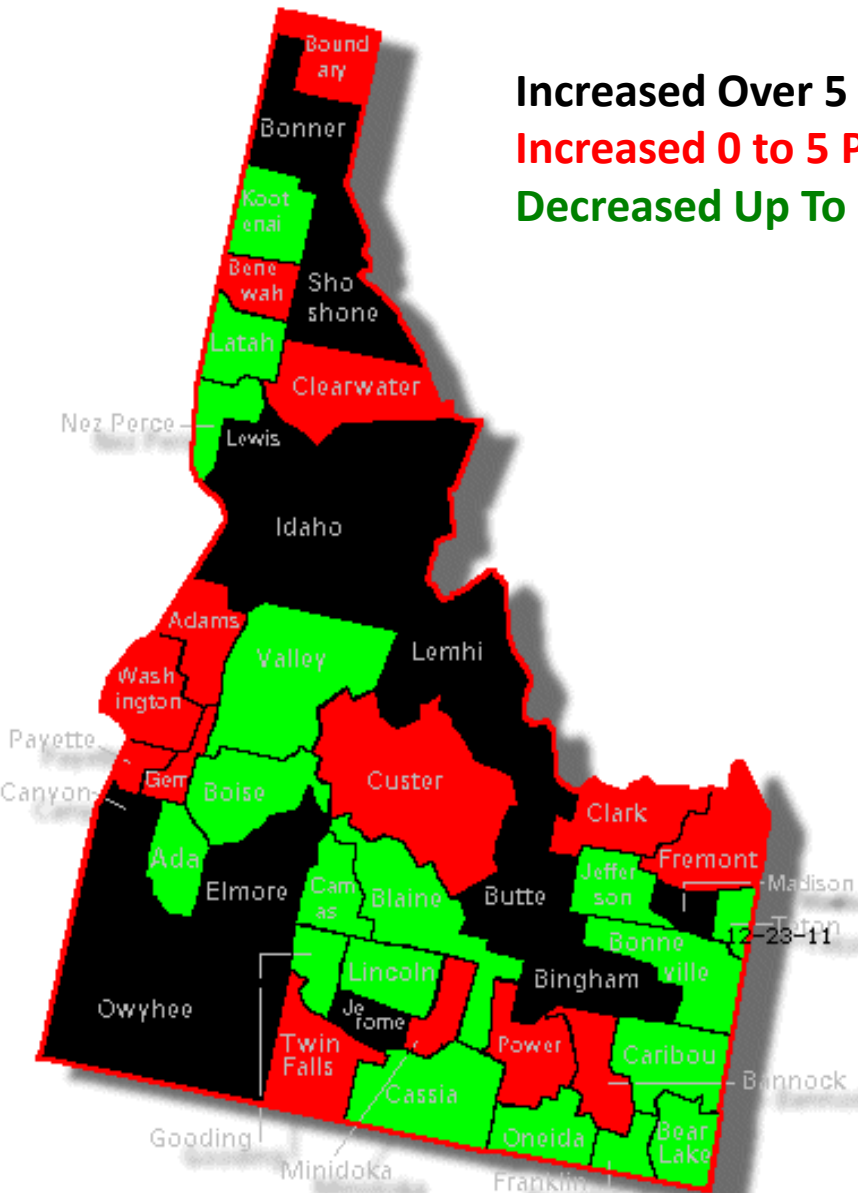


# Change in Poverty Rate, 2009-2010

Increased Over 5 Points

Increased 0 to 5 Points

Decreased Up To 15 Points



Increased Over 5 Percentage Points – Butte, Elmore, Jerome, Bonner, Lewis, Lemhi, Owyhee, Idaho, Bingham, Canyon, Shoshone and Madison

Increased 0 to 5 Percentage Points – Gem, Payette, Benewah, Custer, Adams, Clark, Fremont, Power, Clearwater, Minidoka, Boundary, Bannock, Washington and Twin Falls

Decreased Up To 15 Percentage Points – Lincoln, Camas, Oneida, Gooding, Franklin, Caribou, Valley, Kootenai, Jefferson, Blaine, Bonneville, Boise, Teton, Ada, Latah, Bear Lake, Cassia and Nez Perce

# Annualized Projected Percentage Job Growth By Sector

Two-Year  
Growth

