

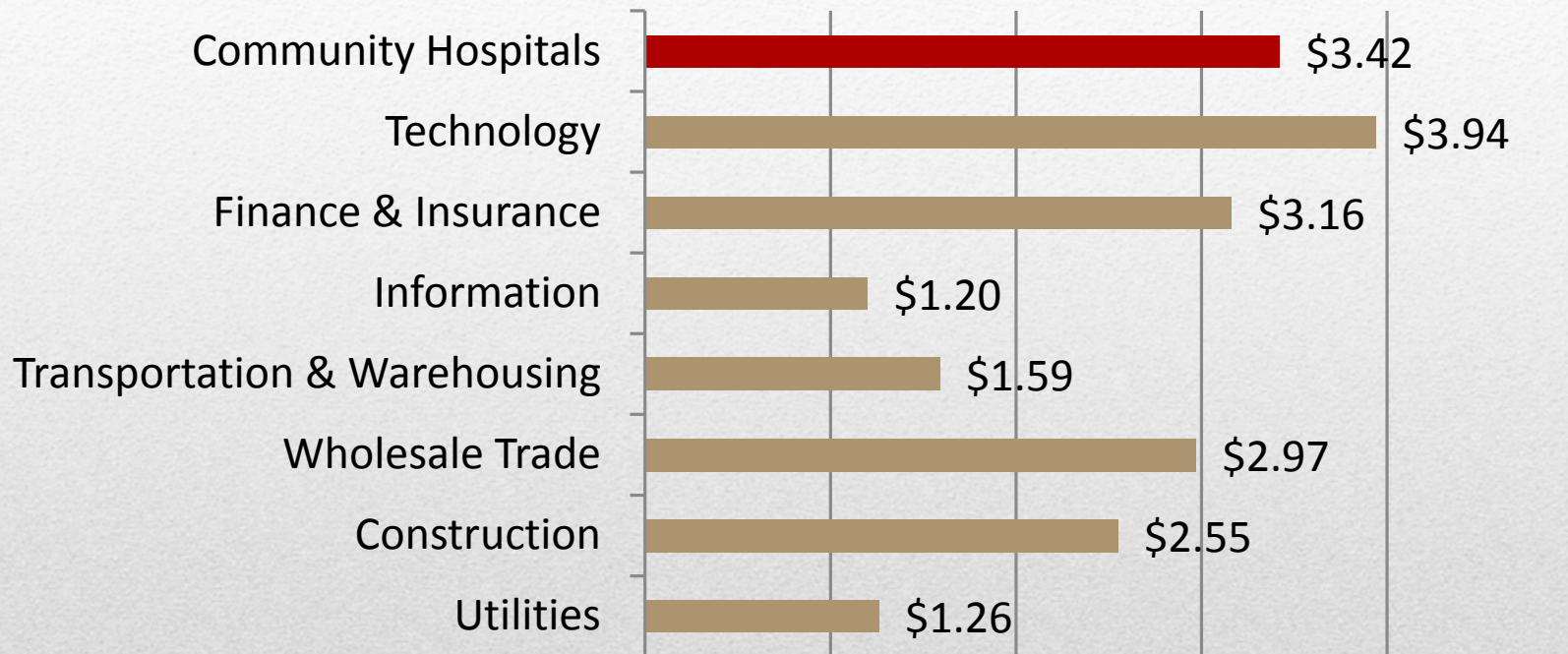
# Idaho Hospital Association

2012 Economic Outlook & Revenue  
Assessment Committee

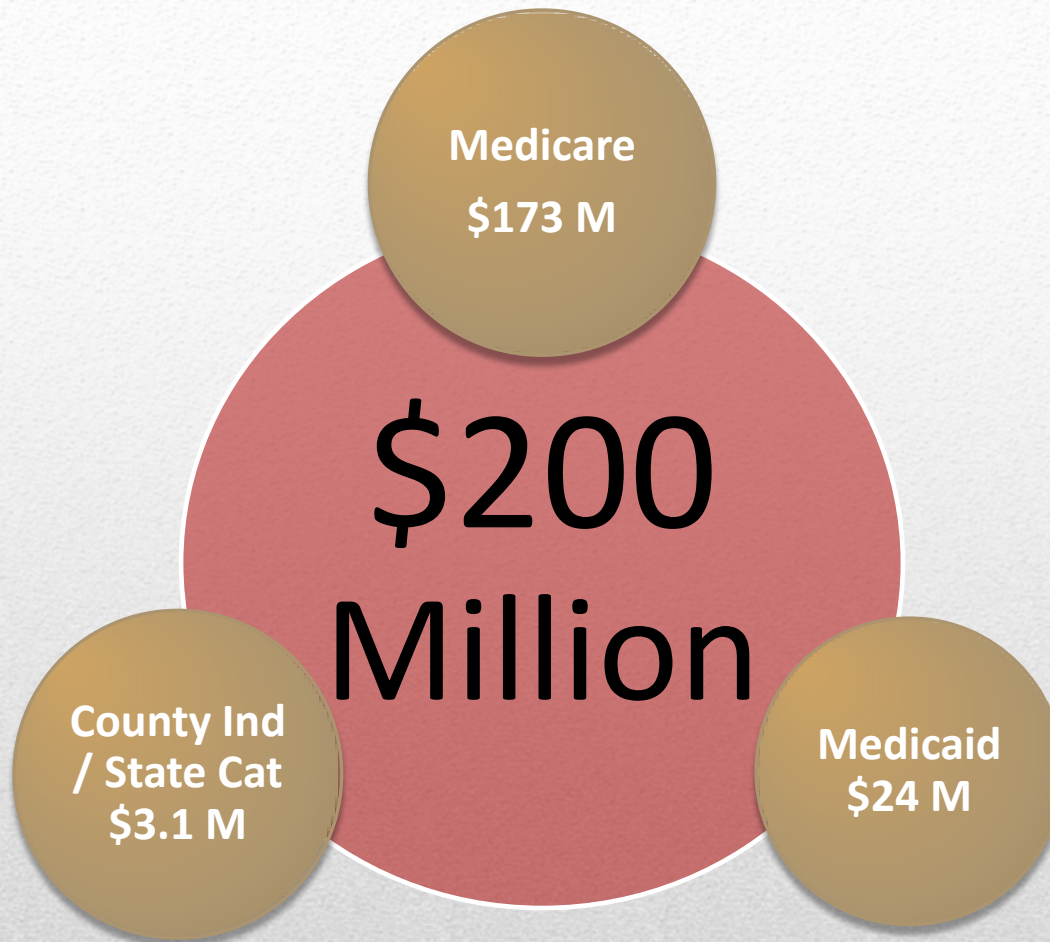
Community Hospitals  
6.2% Idaho GSP  
\$3.42 billion



## Fiscal Impact of Idaho Industries (in billions)



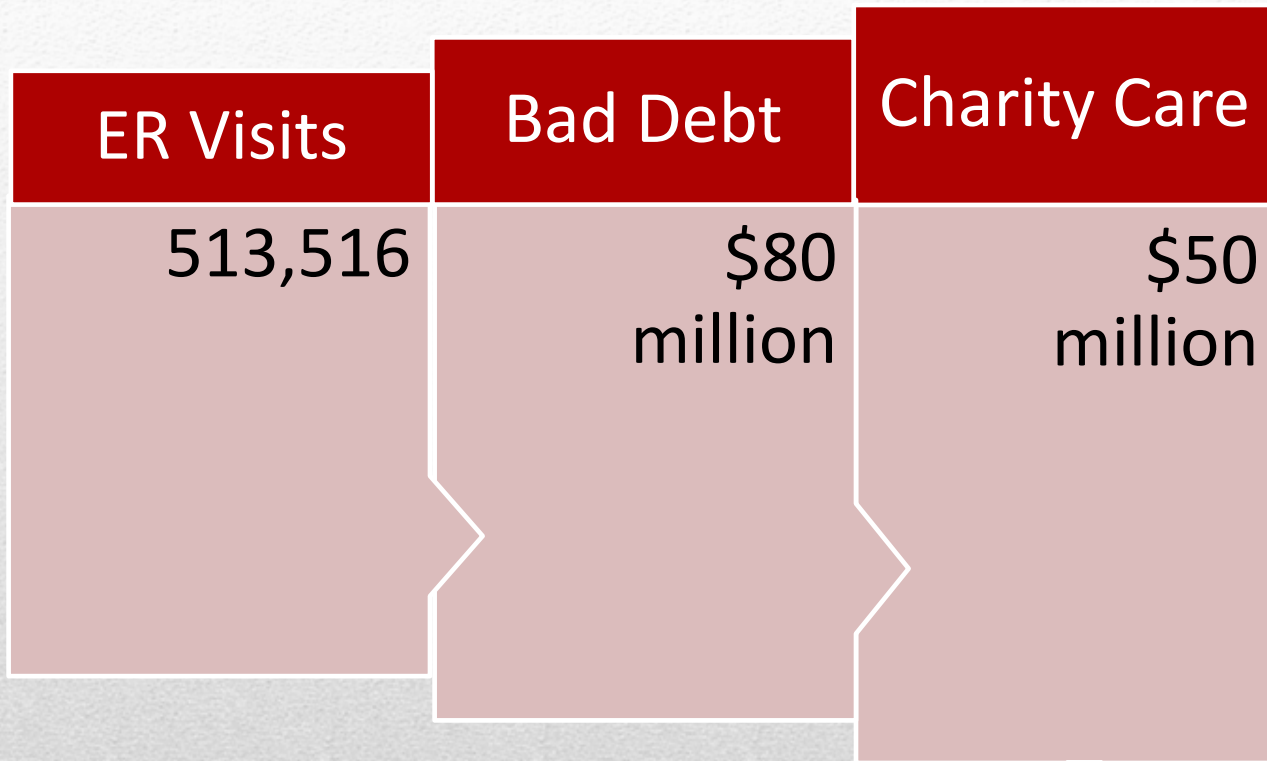
Hospitals – a vital part of Idaho's economy



## Government Program Underpayment



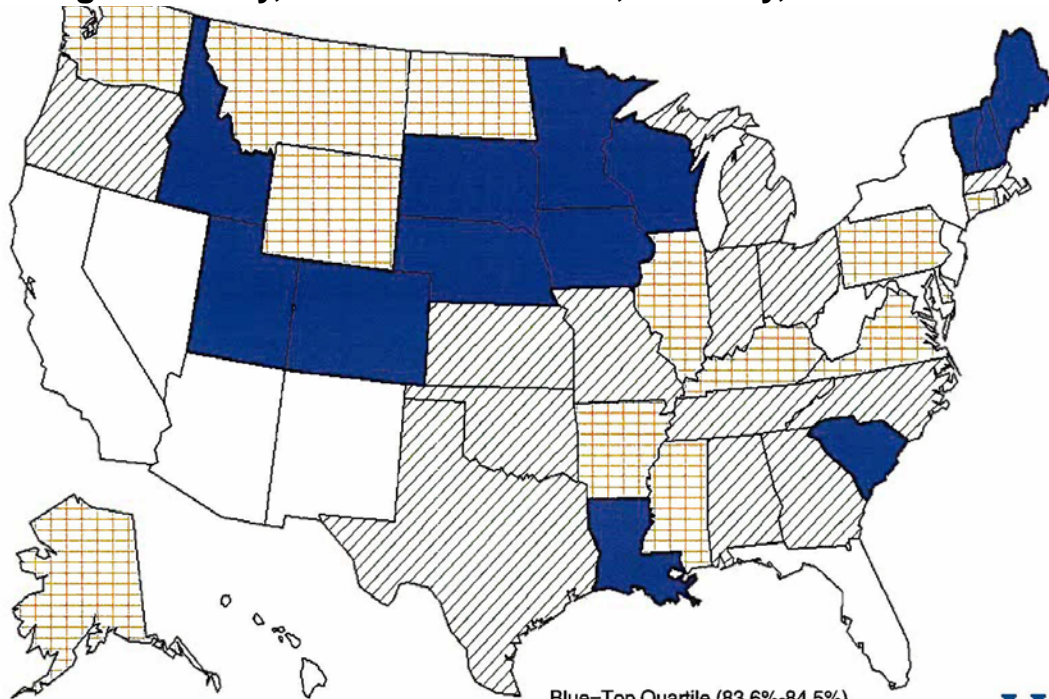
# Medicare losses for Idaho hospitals



# State Performance-Overall Score

**Idaho Overall Score = 84.1% Rank = 2 out of 51**

Ranking on Quality, Patient Satisfaction, Mortality, & Readmissions



Blue=Top Quartile (83.6%-84.5%)  
Green=Second Quartile (82.8%-83.5%)  
Orange=Third Quartile (82.4%-82.8%)  
White=Bottom Quartile (79.8%-82.4%)

**HRET**  
HEALTH RESEARCH &  
EDUCATIONAL TRUST  
In Partnership with AHA

## Idaho Hospitals Recognized for Quality

25,087  
people  
employed

\$1.2 billion  
annual  
payroll

# Jobs & Payroll

**Jobs**

- 61,872 jobs
- \$2.56 billion in payroll

**Economic Activity**

- \$5.9 billion

**Tax Impacts**

- \$119 million

# Economic Impacts

Includes direct, indirect, and ripple effect of jobs, payroll, expenses, & taxes



Quality Jobs & Job Creation  
Community Growth & Stability

Idaho



Hospital

Association